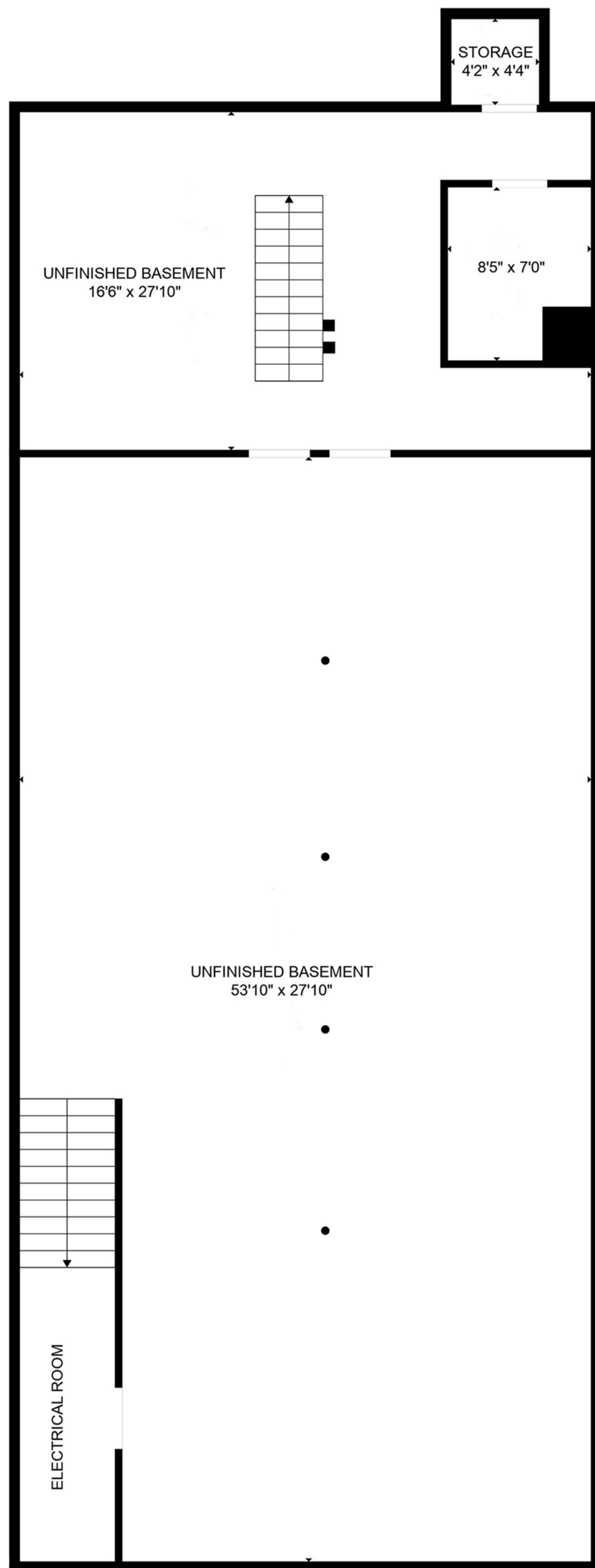
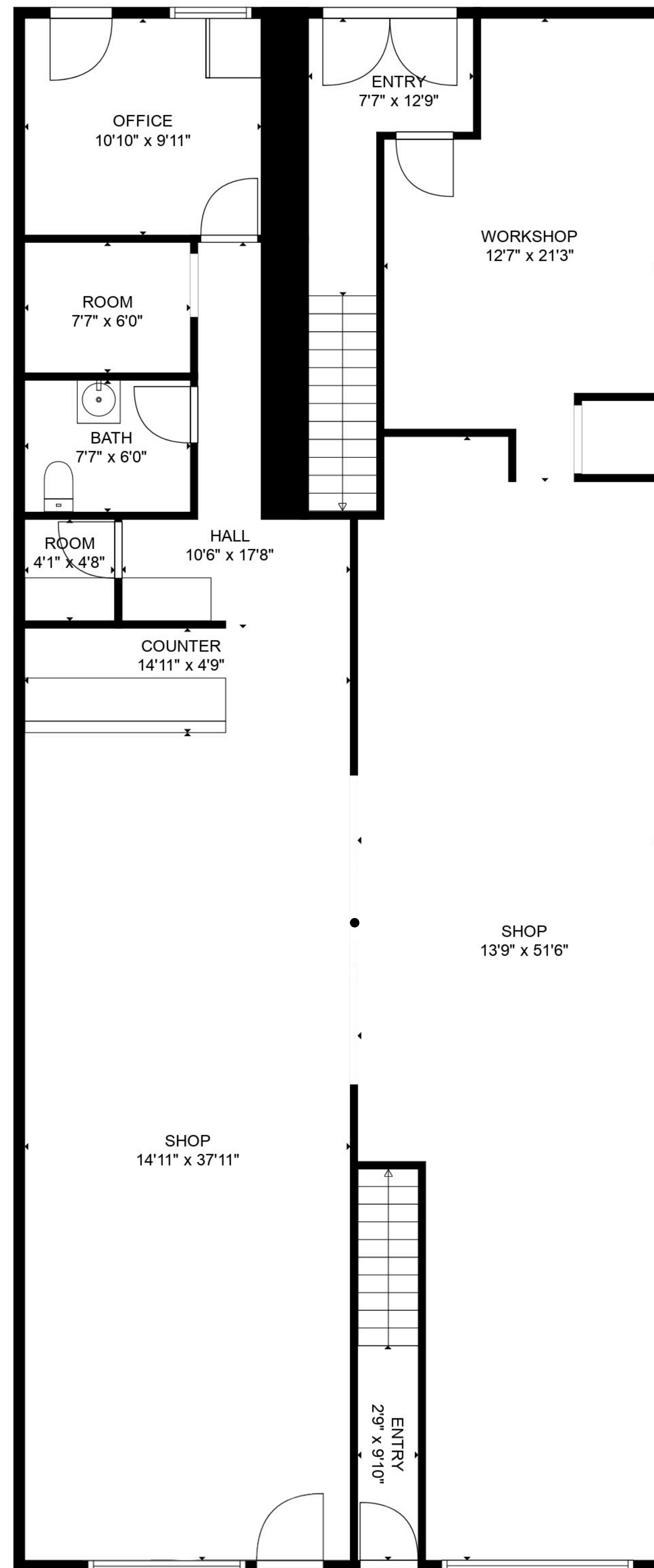


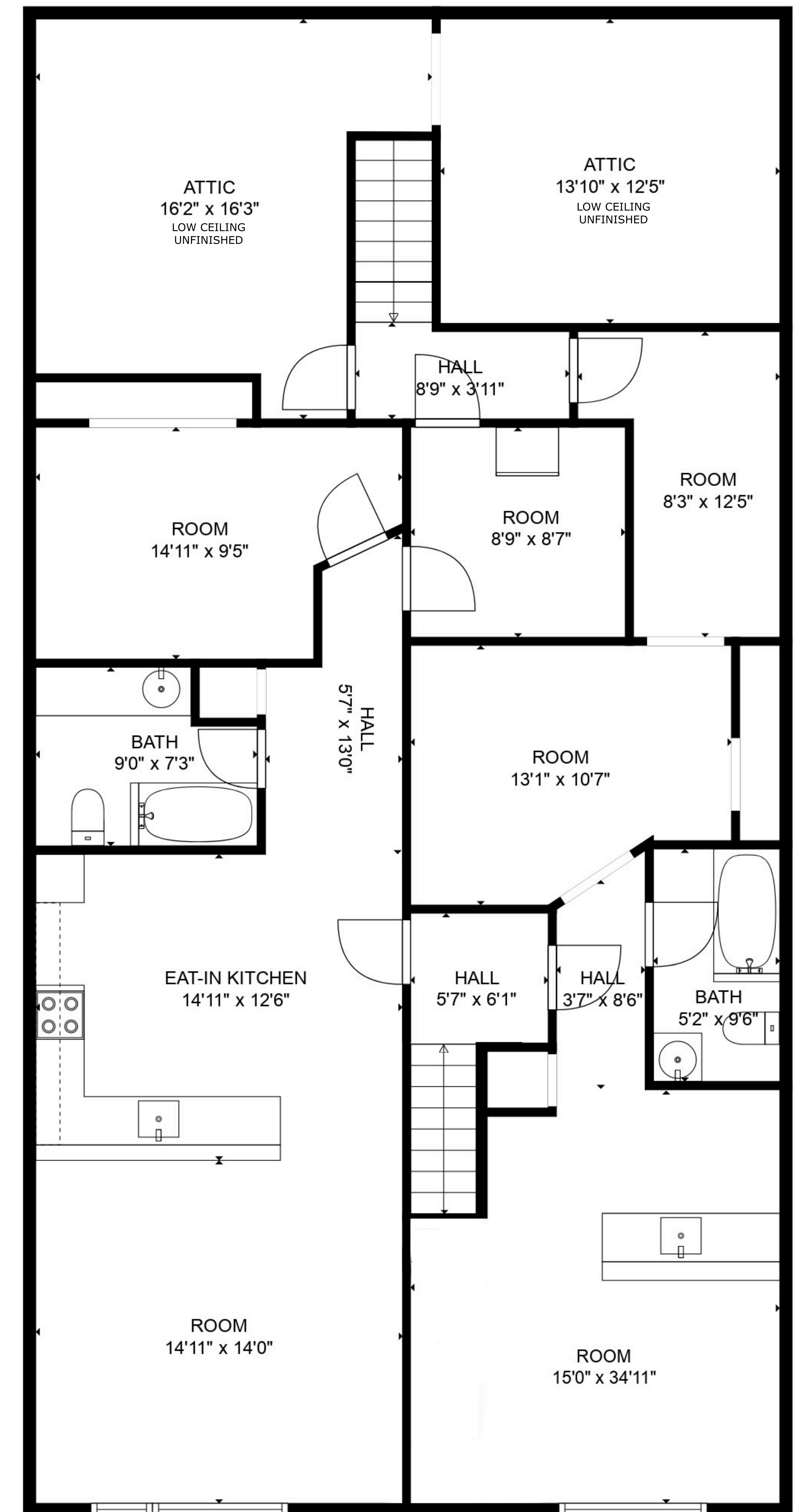
2080 Washington St., Rossland B.C. - Butch Boutry Ski Shop



BASEMENT



FLOOR 1



FLOOR 2

Compliments of Mountain Town Properties

Estimated areas

BASEMENT : 2171 sq. ft, excluded 0 sq. ft
 GLA FLOOR 1: 2153 sq. ft, excluded 0 sq. ft
 GLA FLOOR 2: 1514 sq. ft, excluded 407 sq. ft
 TOTAL BASEMENT+GLA 5838 sq. ft, total scanned area 6245 sq. ft

