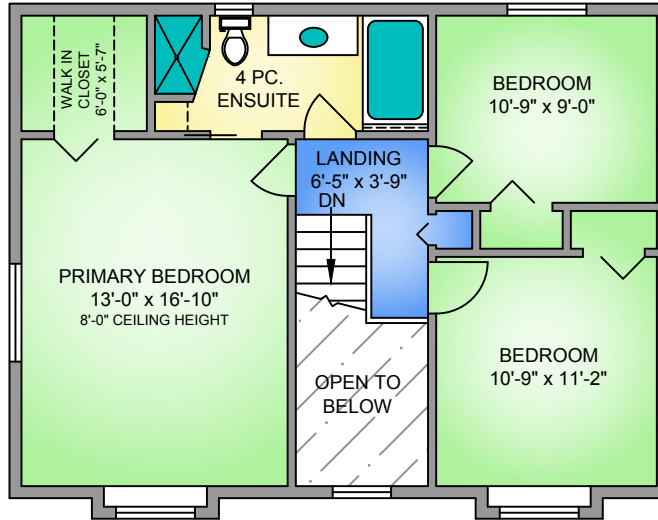
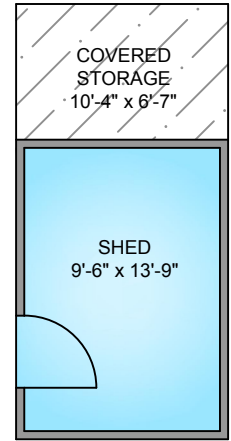
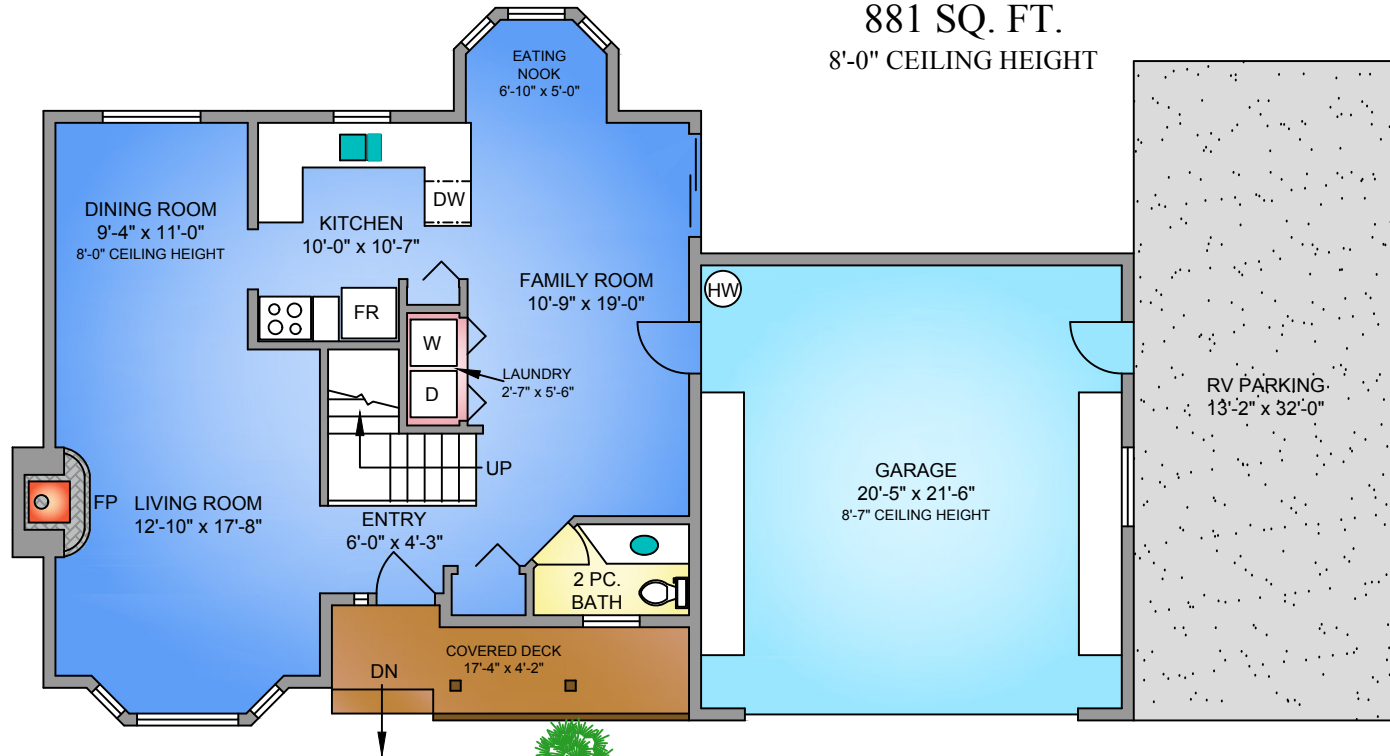


UPPER FLOOR
716 SQ. FT.
 8'-0" CEILING HEIGHT



3519 DOUGAN DRIVE MAY 19, 2022 PREPARED FOR THE EXCLUSIVE USE OF SEAN HUMM. PLANS MAY NOT BE 100% ACCURATE, IF CRITICAL BUYER TO VERIFY.				
FLOOR	TOTAL	AREA (SQ. FT.)		
		FINISHED	GARAGE	DECK / PATIO
MAIN	881	881	484	72
UPPER	716	716	-	-
TOTAL	1597	1597	484	72

MAIN FLOOR
881 SQ. FT.
 8'-0" CEILING HEIGHT



NORTH

