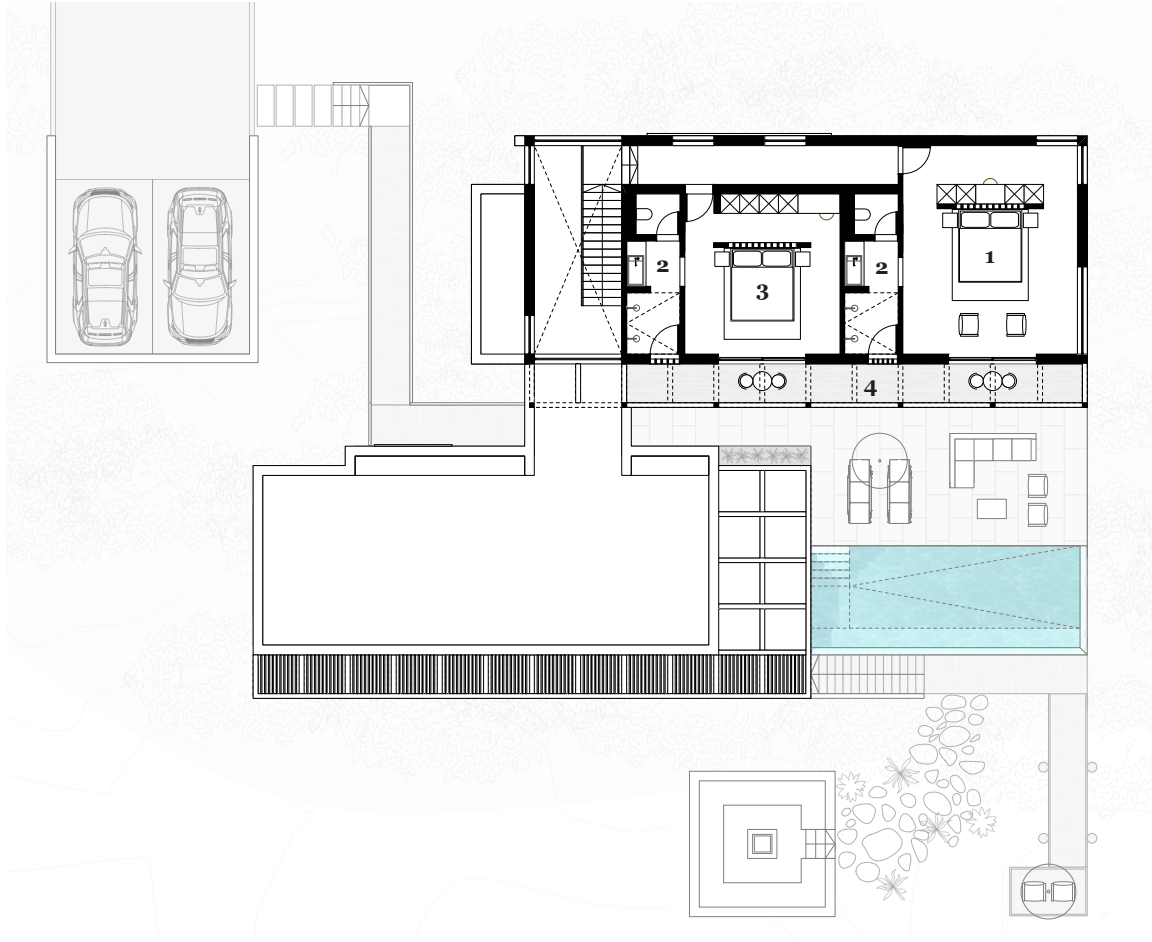


## 4 Bed Lakehouse

### Level 1

- |   |                  |    |                  |
|---|------------------|----|------------------|
| 1 | Parking          | 9  | Powder Room      |
| 2 | Entry Bridge     | 10 | Bed 2            |
| 3 | Entrance Lobby   | 11 | Bed 3            |
| 4 | Living Space     | 12 | Ensuite bathroom |
| 5 | Kitchen / Dining | 13 | Pool Terrace     |
| 6 | Pantry           | 14 | Pool             |
| 7 | Laundry          | 15 | Outdoor Dining   |
| 8 | Nook             |    |                  |



## 4 Bed Lakehouse

### Level 2

- 1 Master Bedroom
- 2 Ensuite
- 3 Bed 4
- 4 Terrace

|                    |                   |
|--------------------|-------------------|
| > Built Interior   | 3300 sq ft        |
| > Terraces + Pools | 1670 sq ft        |
| > <b>Total</b>     | <b>4970 sq ft</b> |