

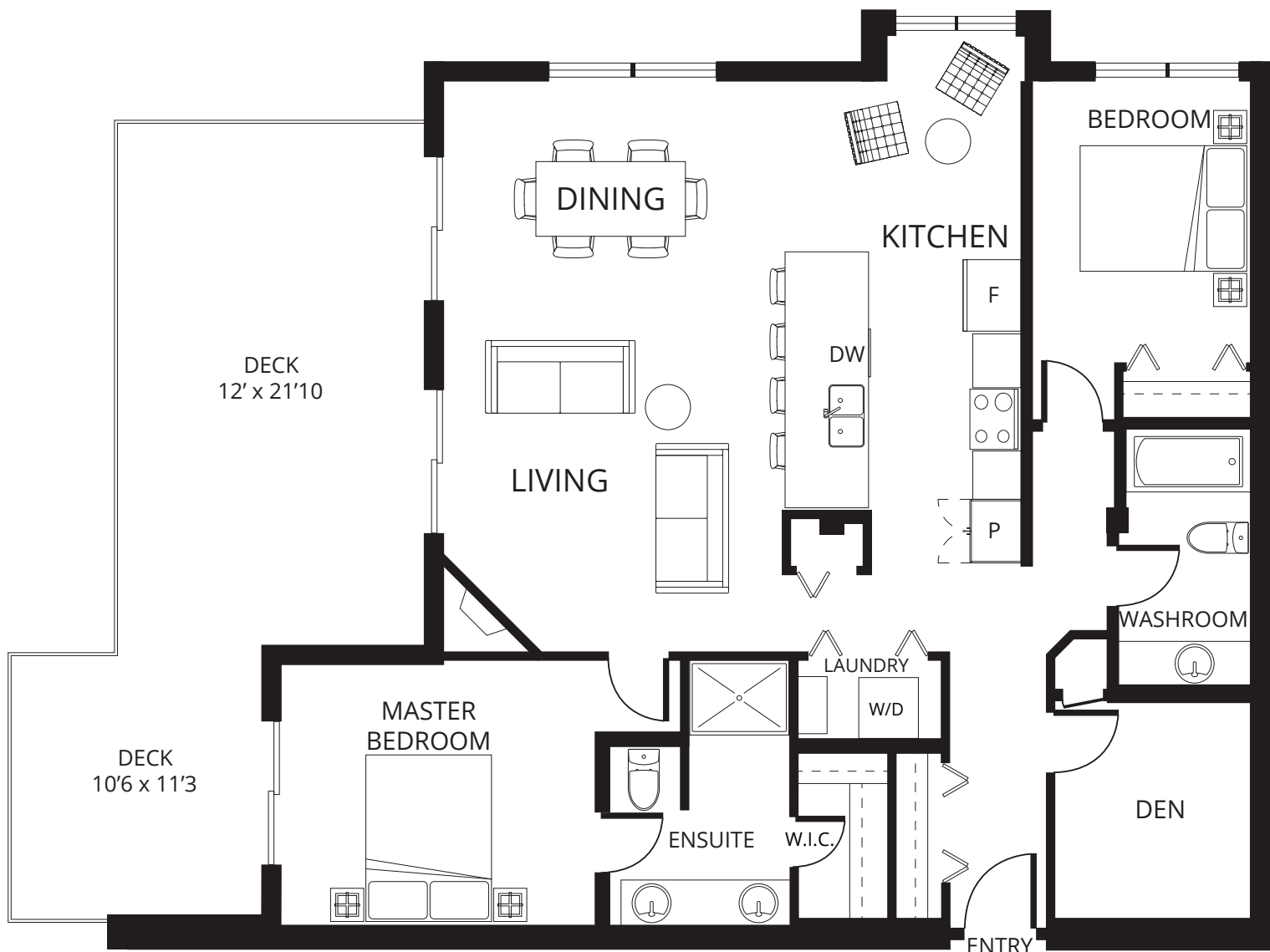
# Skaha Lake Towers Phase 3

skahalaketowers.ca

# Plan D

11th Floor 1,375 sq.ft. 2 bedroom

UNIT: 1101



Living:  
14'4 x 14'4

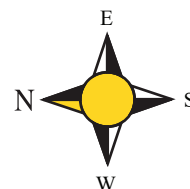
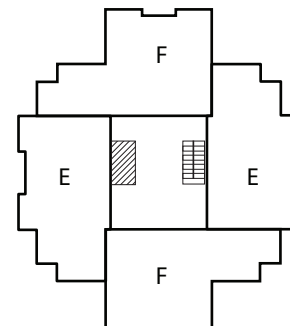
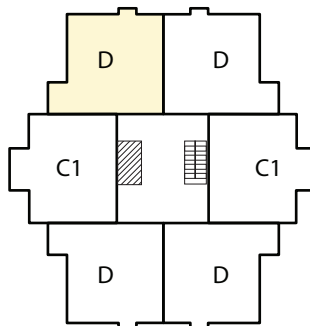
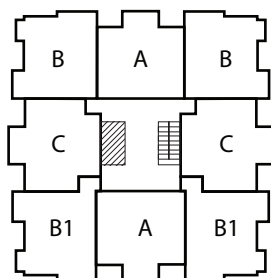
Dining:  
12'9 x 14'2

Kitchen:  
9'10 x 13'6

Master:  
11'2 x 11'

Bedroom:  
9' x 10'11

Den:  
7'11 x 9'



Philip\*, Diane\*, Stephen\* Fox  
\*Personal Real Estate Corporation

RE/MAX Penticton Realty  
foxandfox@pentictonproperties.com

Toll Free: 1-800-652-6246  
Phone: 250-492-2266

copyright 2022 Skaha Lake Towers

The developer reserves the right to make modifications and changes to plans, specifications and prices without notice. E.O.&E. Square Footage is approximate.

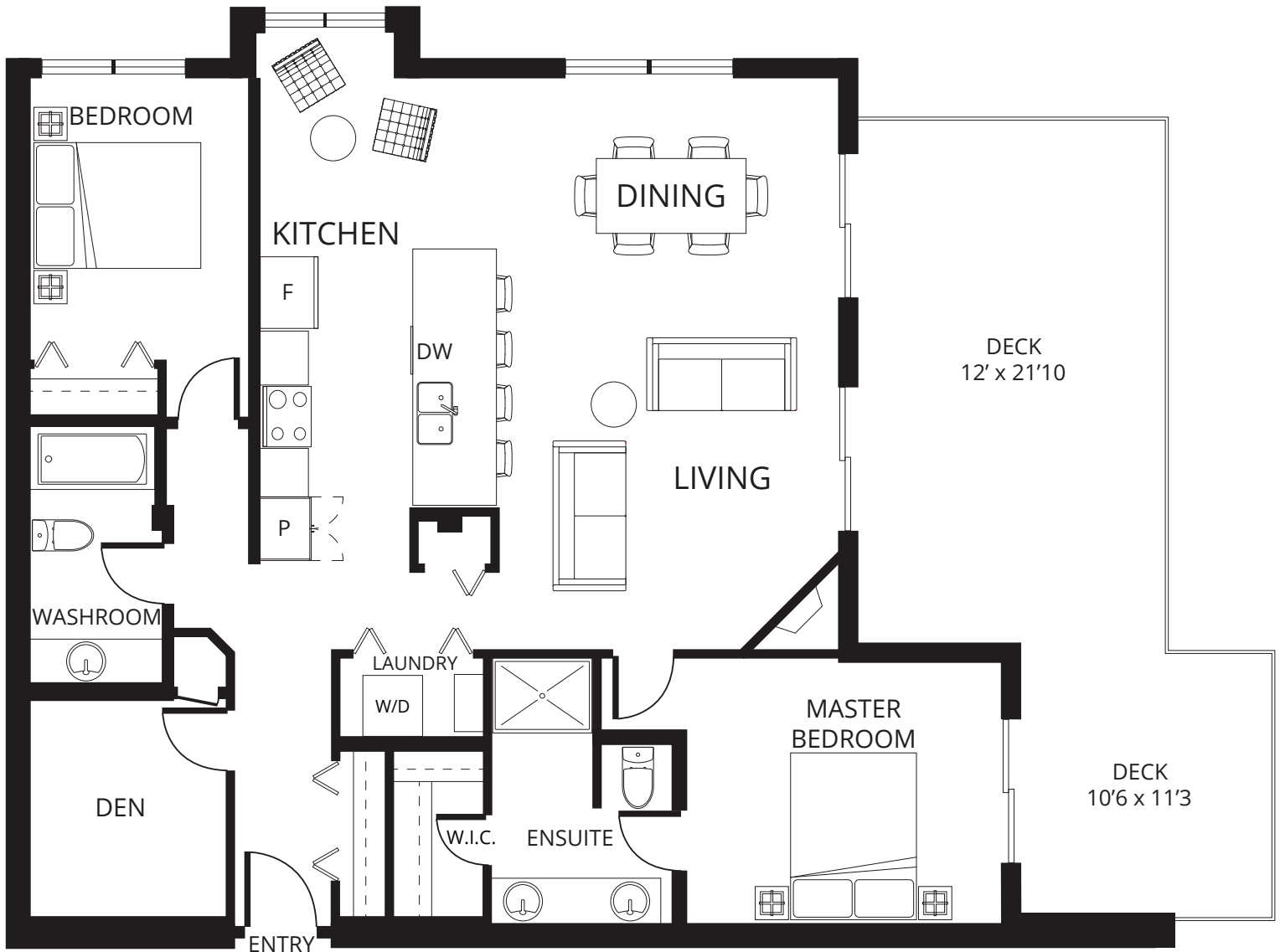
# Skaha Lake Towers Phase 3

skahalaketowers.ca

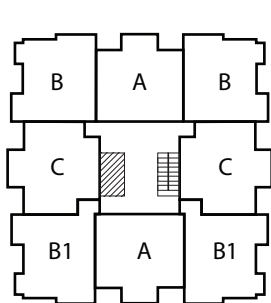
# Plan D

11th Floor 1,375 sq.ft. 2 bedroom

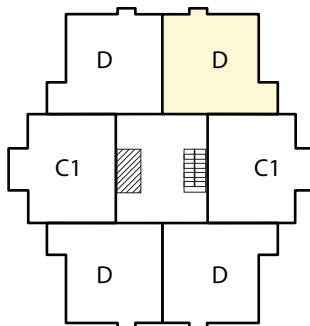
UNIT: 1106



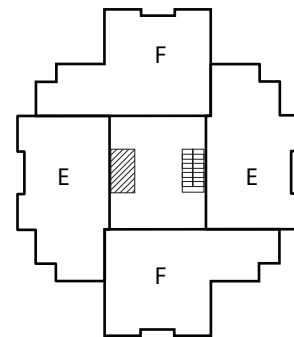
Living: 14'4 x 14'4    Dining: 12'9 x 14'2    Kitchen: 9'10 x 13'6    Master: 11'2 x 11'    Bedroom: 9' x 10'11    Den: 7'11 x 9'



3rd to 10th Floor



11th and 12th Floor



13th and 14th Floor



Philip\*, Diane\*, Stephen\* Fox  
\*Personal Real Estate Corporation

RE/MAX Penticton Realty  
foxandfox@pentictonproperties.com

Toll Free: 1-800-652-6246  
Phone: 250-492-2266

copyright 2022 Skaha Lake Towers

The developer reserves the right to make modifications and changes to plans, specifications and prices without notice. E.O.&E. Square Footage is approximate.

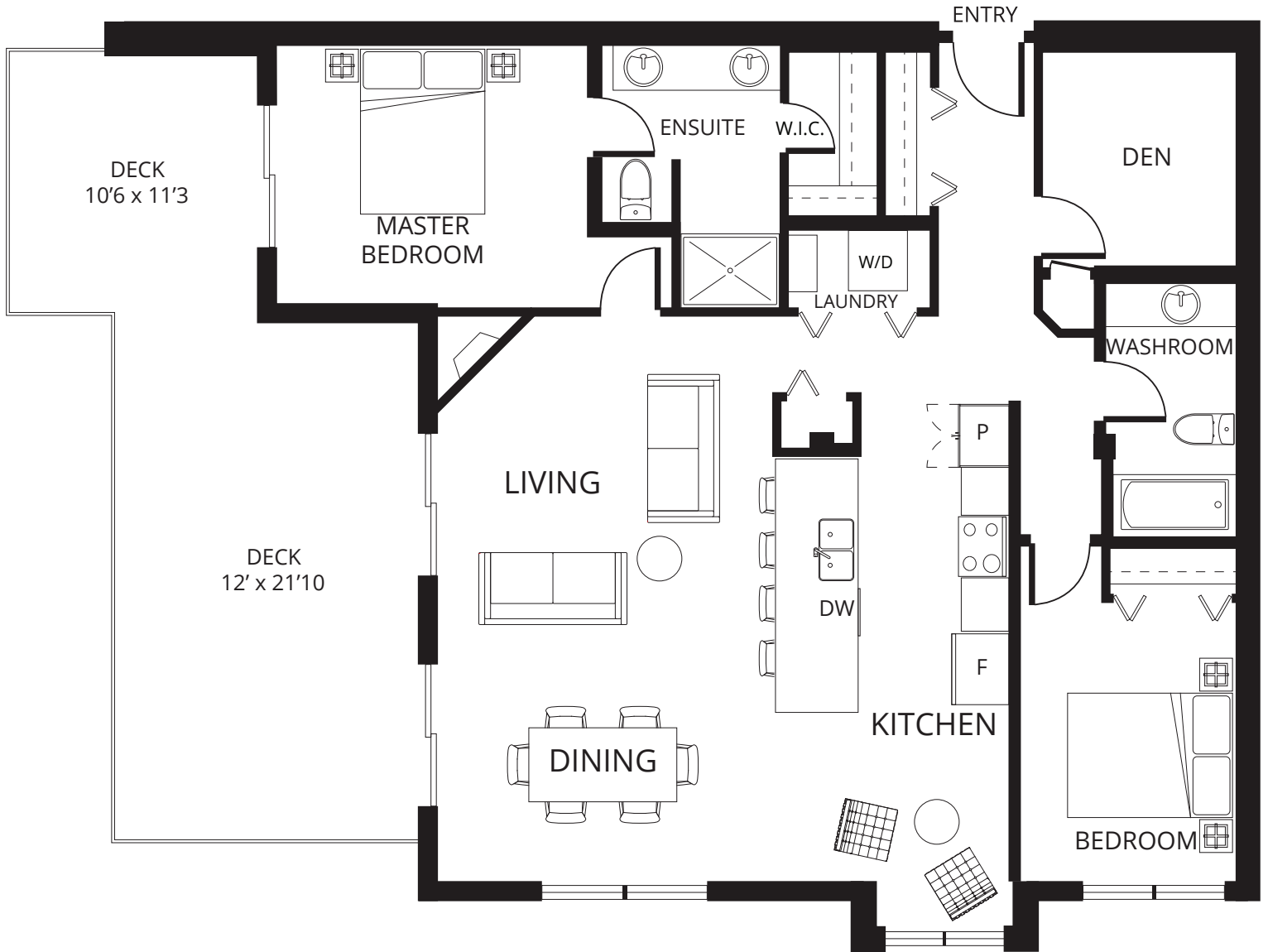
# Skaha Lake Towers Phase 3

skahalaketowers.ca

# Plan D

11th Floor 1,375 sq.ft. 2 bedroom

UNIT: 1103



Living:  
14'4 x 14'4

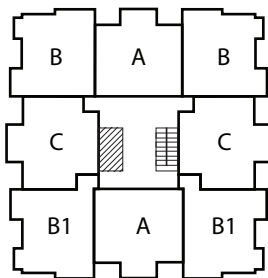
Dining:  
12'9 x 14'2

Kitchen:  
9'10 x 13'6

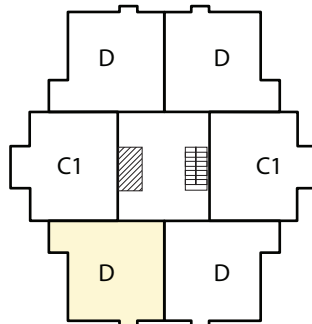
Master:  
11'2 x 11'

Bedroom:  
9' x 10'11

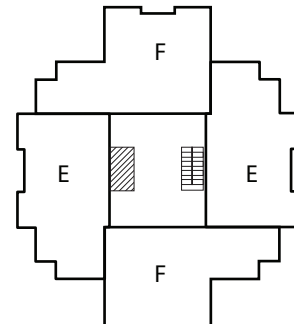
Den:  
7'11 x 9'



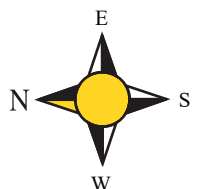
3rd to 10th Floor



11th and 12th Floor



13th and 14th Floor



Philip\*, Diane\*, Stephen\* Fox

\*Personal Real Estate Corporation

RE/MAX Penticton Realty

foxandfox@pentictonproperties.com

Toll Free: 1-800-652-6246

Phone: 250-492-2266

copyright 2022 Skaha Lake Towers

The developer reserves the right to make modifications and changes to plans, specifications and prices without notice. E.O.&E. Square Footage is approximate.

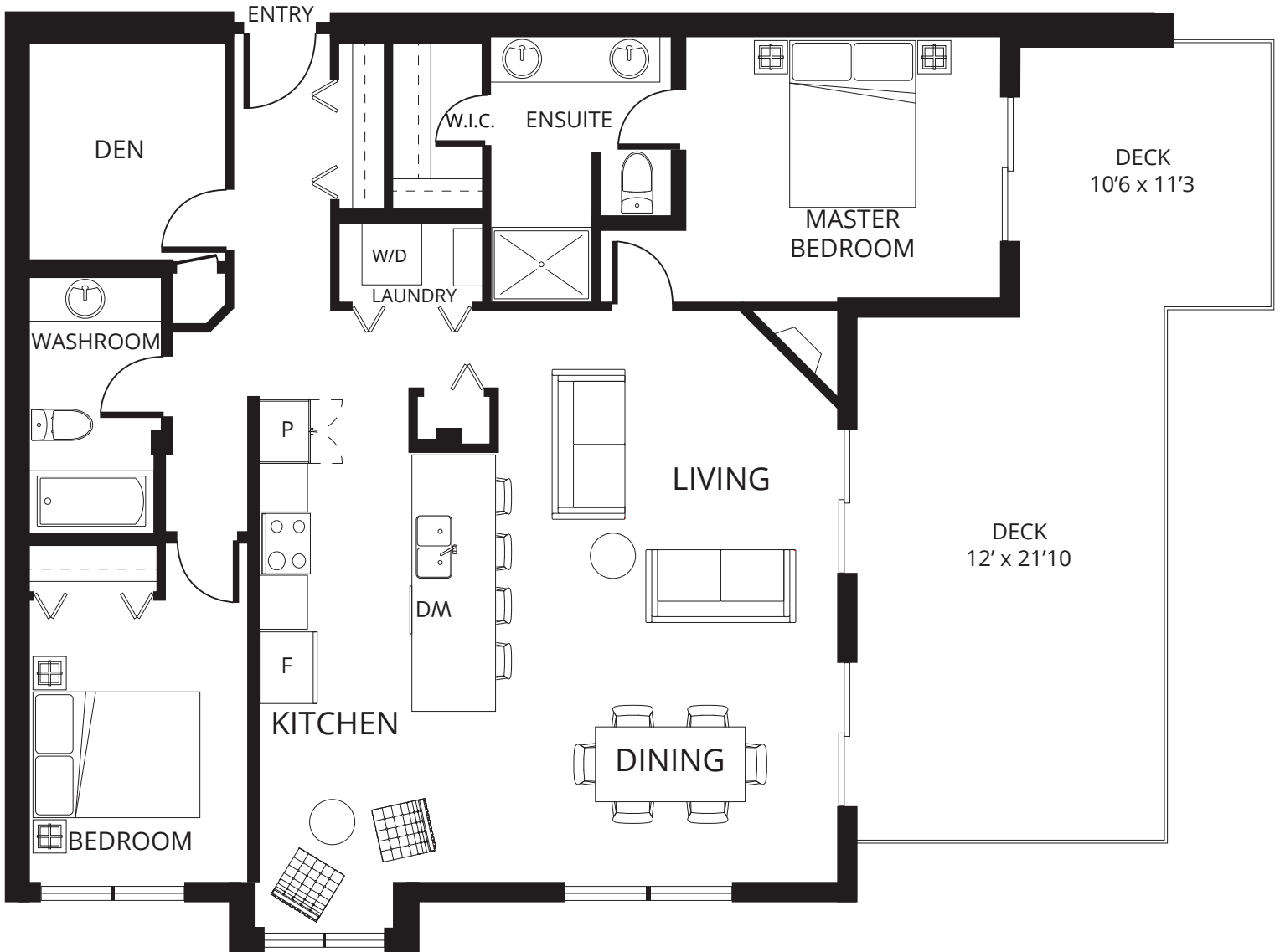
# Skaha Lake Towers Phase 3

skahalaketowers.ca

# Plan D

11th Floor 1,375 sq.ft. 2 bedroom

UNIT: 1104



Living:  
14'4 x 14'4

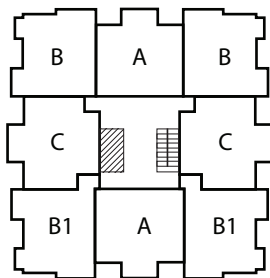
Dining:  
12'9 x 14'2

Kitchen:  
9'10 x 13'6

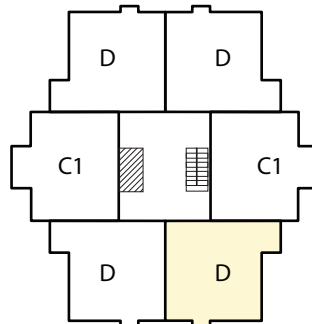
Master:  
11'2 x 11'

Bedroom:  
9' x 10'11

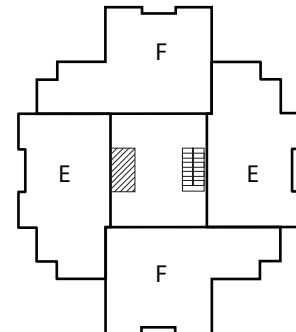
Den:  
7'11 x 9'



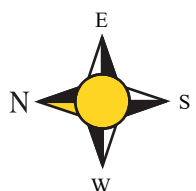
3rd to 10th Floor



11th and 12th Floor



13th and 14th Floor



Philip\*, Diane\*, Stephen\* Fox

\*Personal Real Estate Corporation

RE/MAX Penticton Realty

foxandfox@pentictonproperties.com

Toll Free: 1-800-652-6246

Phone: 250-492-2266

copyright 2022 Skaha Lake Towers

The developer reserves the right to make modifications and changes to plans, specifications and prices without notice. E.O.&E. Square Footage is approximate.

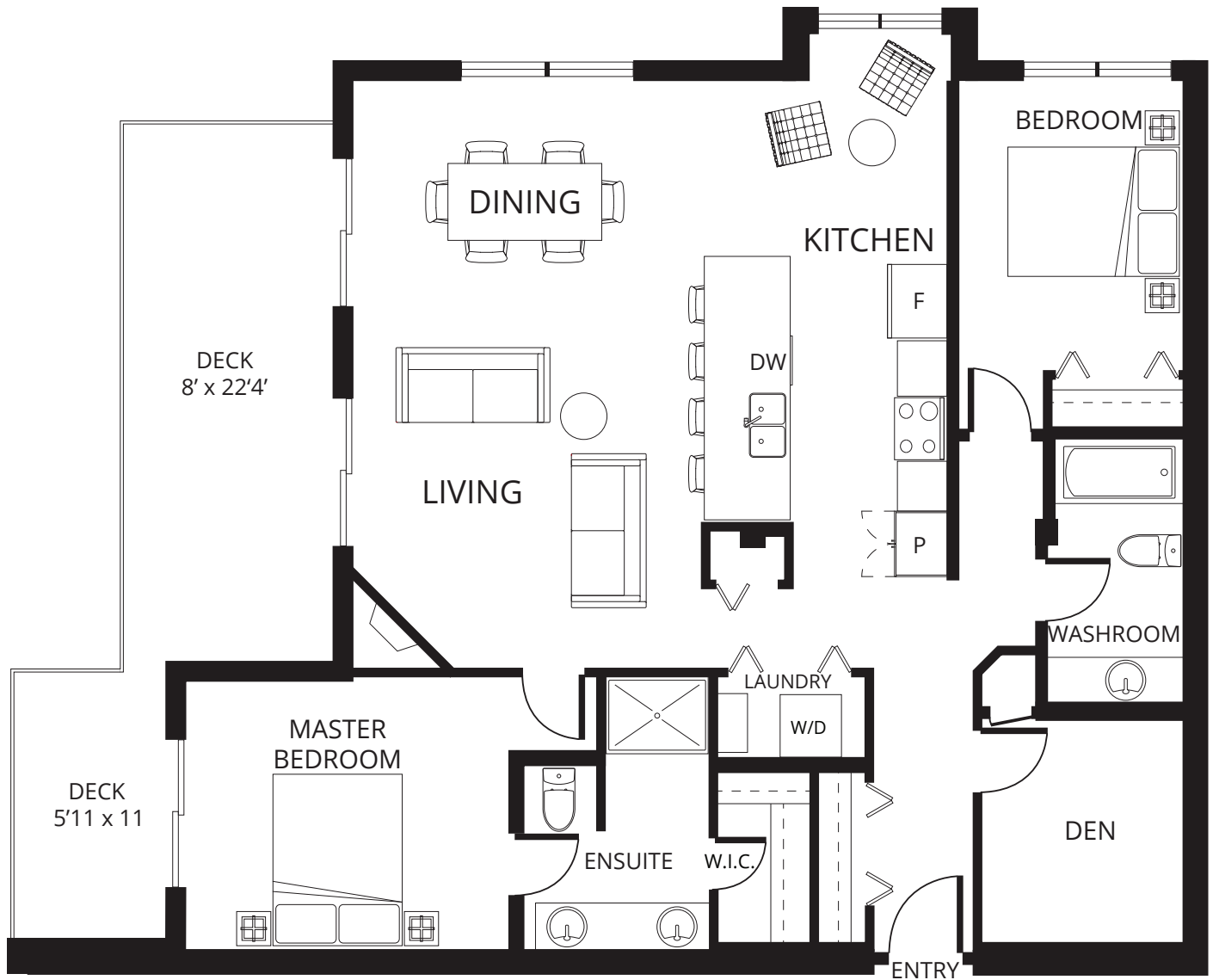
# Skaha Lake Towers Phase 3

skahalaketowers.ca

# Plan D

12th Floor 1,375 sq.ft. 2 bedroom

UNIT: 1201



Living:  
14'4 x 14'4

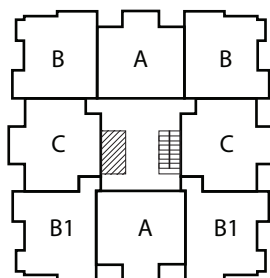
Dining:  
12'9 x 14'2

Kitchen:  
9'10 x 13'6

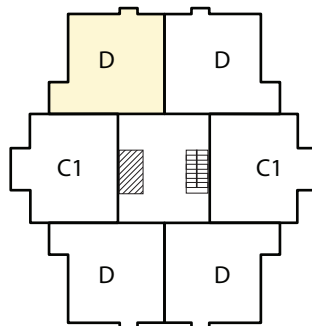
Master:  
11'2 x 11'

Bedroom:  
9' x 10'11

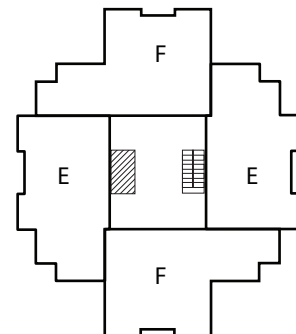
Den:  
7'11 x 9'



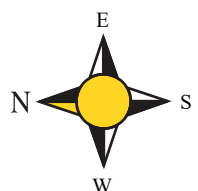
3rd to 10th Floor



11th and 12th Floor



13th and 14th Floor



Philip\*, Diane\*, Stephen\* Fox

\*Personal Real Estate Corporation

RE/MAX Penticton Realty

foxandfox@pentictonproperties.com

Toll Free: 1-800-652-6246

Phone: 250-492-2266

copyright 2022 Skaha Lake Towers

The developer reserves the right to make modifications and changes to plans, specifications and prices without notice. E.O.&E. Square Footage is approximate.

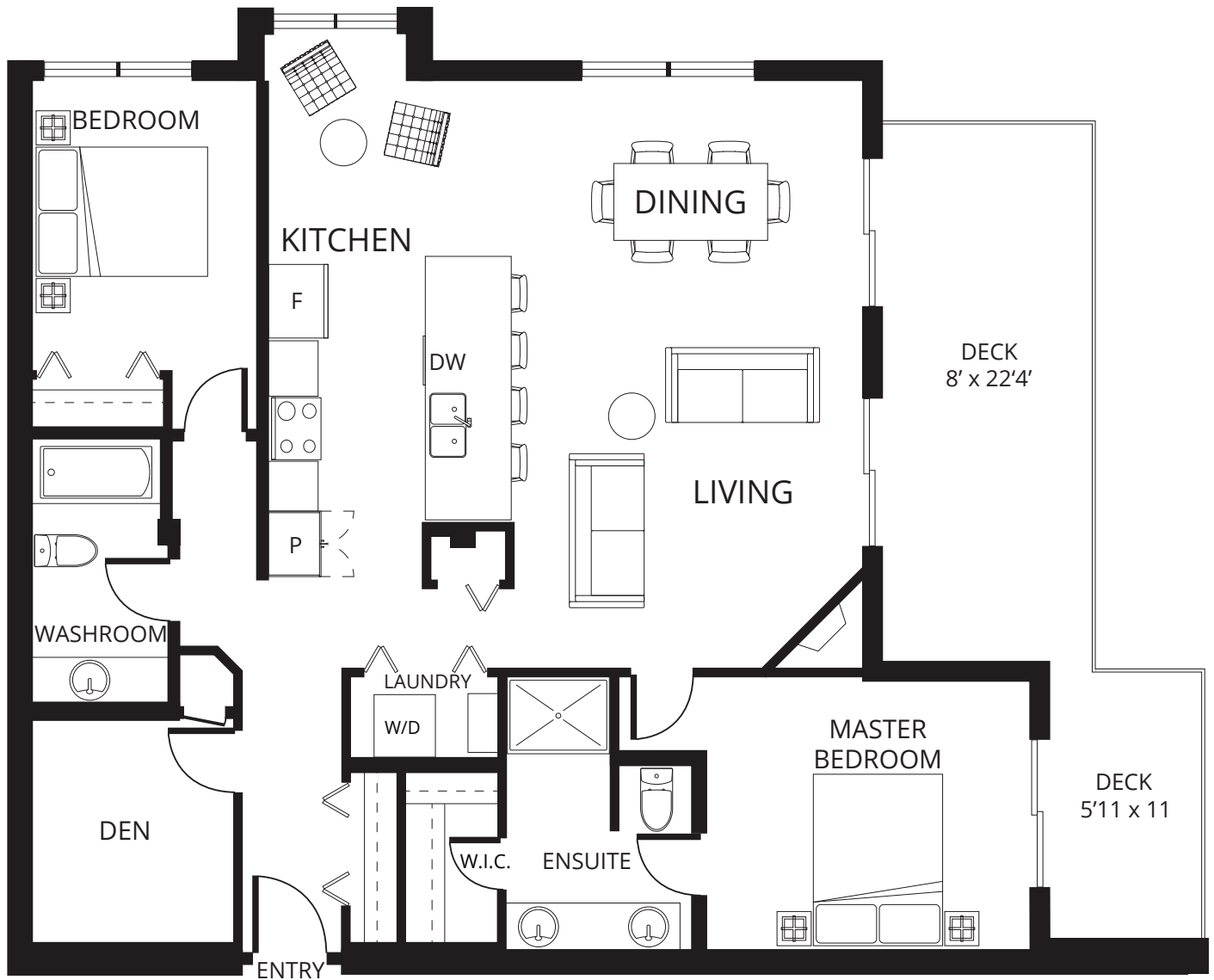
# Skaha Lake Towers Phase 3

skahalaketowers.ca

# Plan D

12th Floor 1,375 sq.ft. 2 bedroom

UNIT: 1206



Living:  
14'4 x 14'4

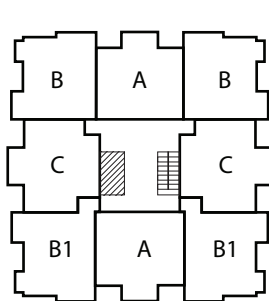
Dining:  
12'9 x 14'2

Kitchen:  
9'10 x 13'6

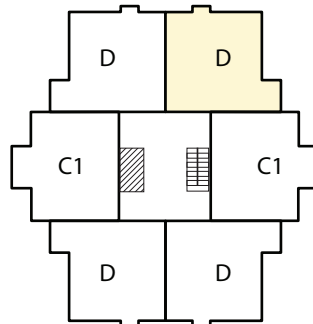
Master:  
11'2 x 11'

Bedroom:  
9' x 10'11

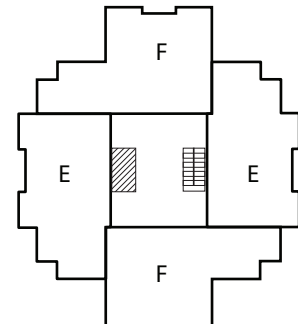
Den:  
7'11 x 9'



3rd to 10th Floor



11th and 12th Floor



13th and 14th Floor



Philip\*, Diane\*, Stephen\* Fox

\*Personal Real Estate Corporation

RE/MAX Penticton Realty

foxandfox@pentictonproperties.com

Toll Free: 1-800-652-6246

Phone: 250-492-2266

copyright 2022 Skaha Lake Towers

The developer reserves the right to make modifications and changes to plans, specifications and prices without notice. E.O.&E. Square Footage is approximate.

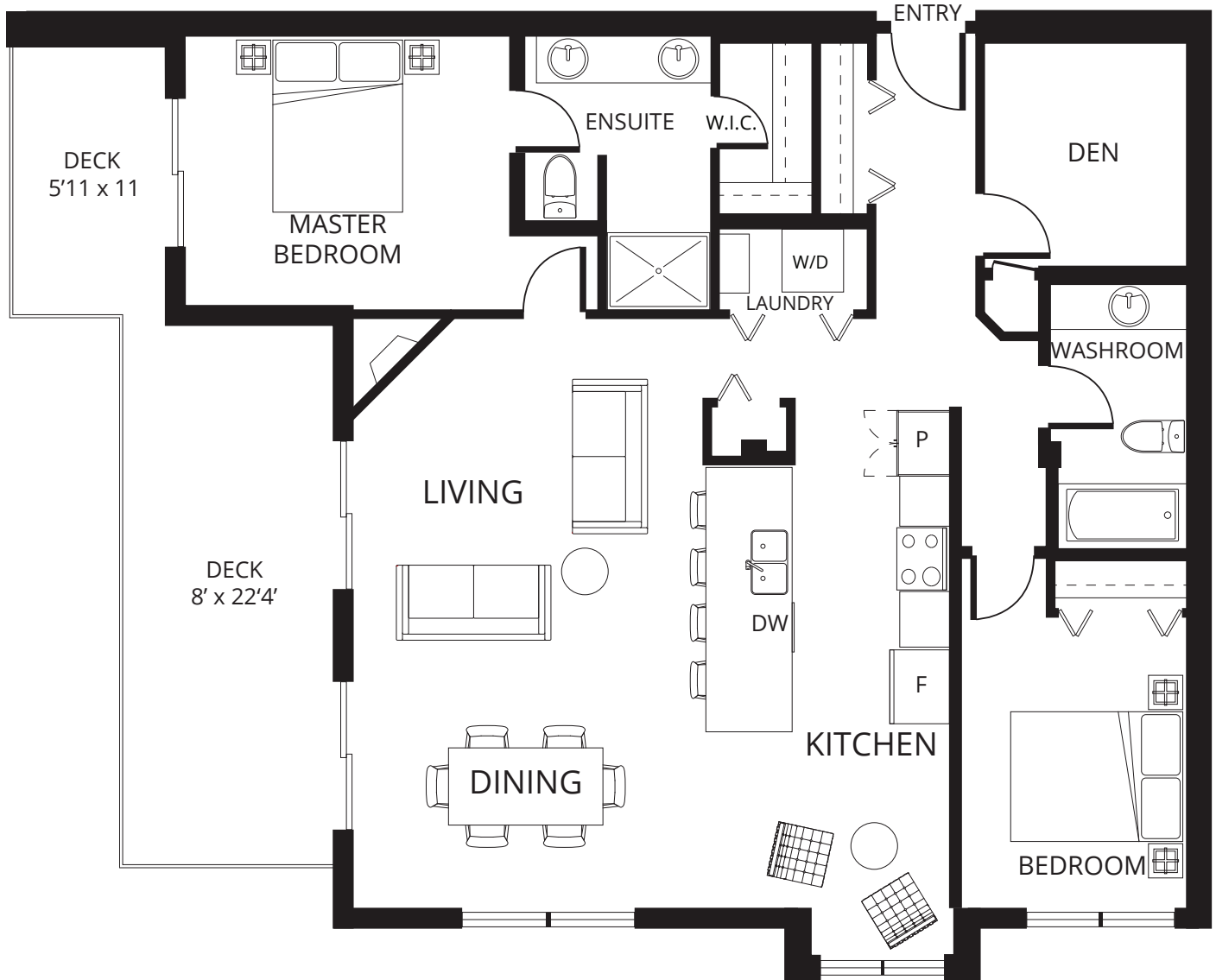
# Skaha Lake Towers Phase 3

skahalaketowers.ca

# Plan D

12th Floor 1,375 sq.ft. 2 bedroom

UNIT: 1203



Living:  
14'4 x 14'4

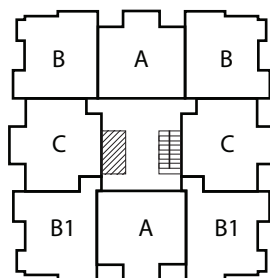
Dining:  
12'9 x 14'2

Kitchen:  
9'10 x 13'6

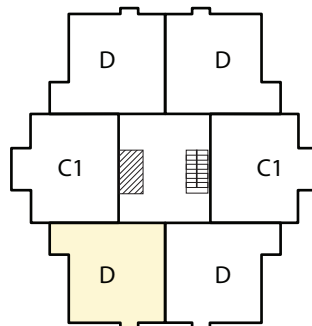
Master:  
11'2 x 11'

Bedroom:  
9' x 10'11

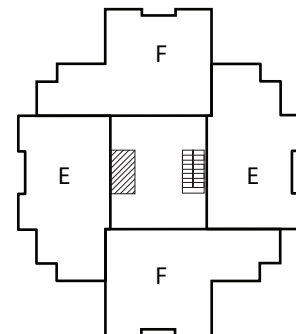
Den:  
7'11 x 9'



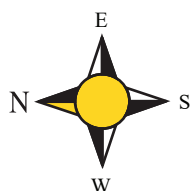
3rd to 10th Floor



11th and 12th Floor



13th and 14th Floor



Philip\*, Diane\*, Stephen\* Fox

\*Personal Real Estate Corporation

RE/MAX Penticton Realty

foxandfox@pentictonproperties.com

Toll Free: 1-800-652-6246

Phone: 250-492-2266

copyright 2022 Skaha Lake Towers

The developer reserves the right to make modifications and changes to plans, specifications and prices without notice. E.O.&E. Square Footage is approximate.

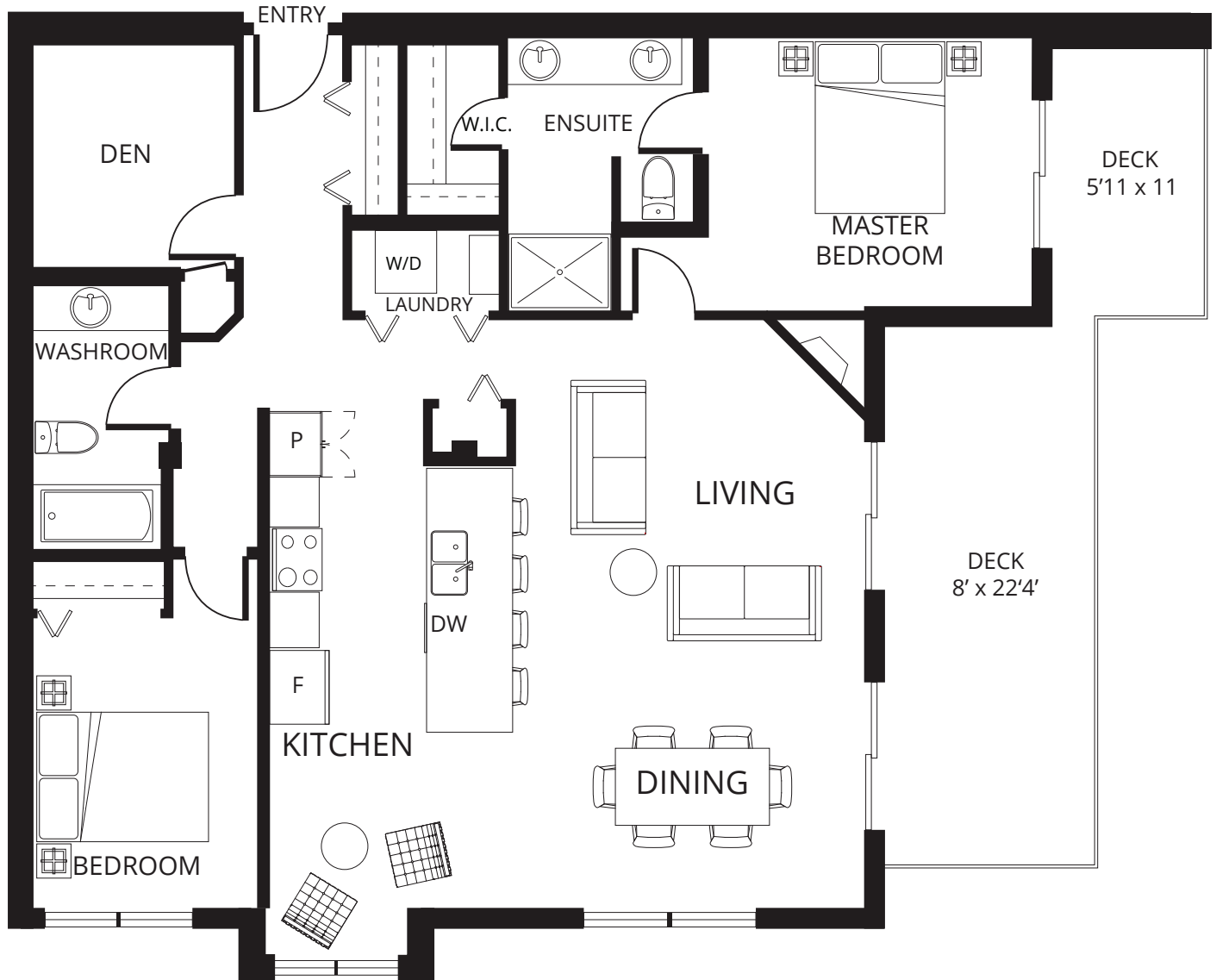
# Skaha Lake Towers Phase 3

skahalaketowers.ca

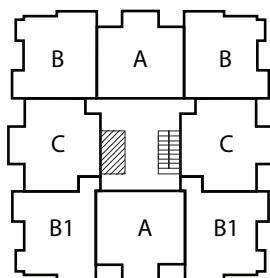
# Plan D

12th Floor 1,375 sq.ft. 2 bedroom

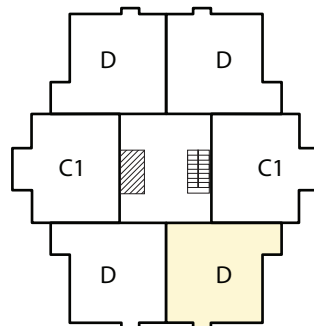
UNIT: 1204



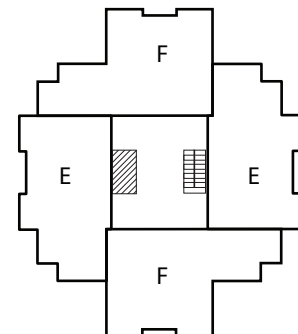
Living: 14'4 x 14'4    Dining: 12'9 x 14'2    Kitchen: 9'10 x 13'6    Master: 11'2 x 11'    Bedroom: 9' x 10'11    Den: 7'11 x 9'



3rd to 10th Floor



11th and 12th Floor



13th and 14th Floor



Philip\*, Diane\*, Stephen\* Fox

\*Personal Real Estate Corporation

RE/MAX Penticton Realty

foxandfox@pentictonproperties.com

Toll Free: 1-800-652-6246

Phone: 250-492-2266

copyright 2022 Skaha Lake Towers

The developer reserves the right to make modifications and changes to plans, specifications and prices without notice. E.O.&E. Square Footage is approximate.