

# Pearl House

LEEWARD  
RESERVE

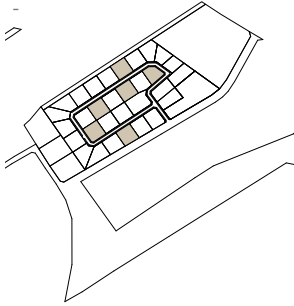
The Pearl House counts with a cozy, modern and contemporary design. Its distribution is designed so that the outdoor space and the pool are the focal point. For this reason, it is located in the center of the first level and is the point of division of the interior spaces. These spaces were considered to be totally open and interact with each other in the social areas such as the kitchen, dining room and living room. Also in the first level, it counts with a bedroom equipped with bathroom and a walking closet. In addition to direct access to the outside.

Taking the stairs to the second level, the large hallway leads us to the three master bedrooms equipped with bathroom and a walking closet plus balconies that area designed for the enjoyment of the Caribbean Breeze.

Exterior Area + 2 Parking Lots



**PEARL HOUSE**  
FIRST FLOOR-PLAN  
MONITOR



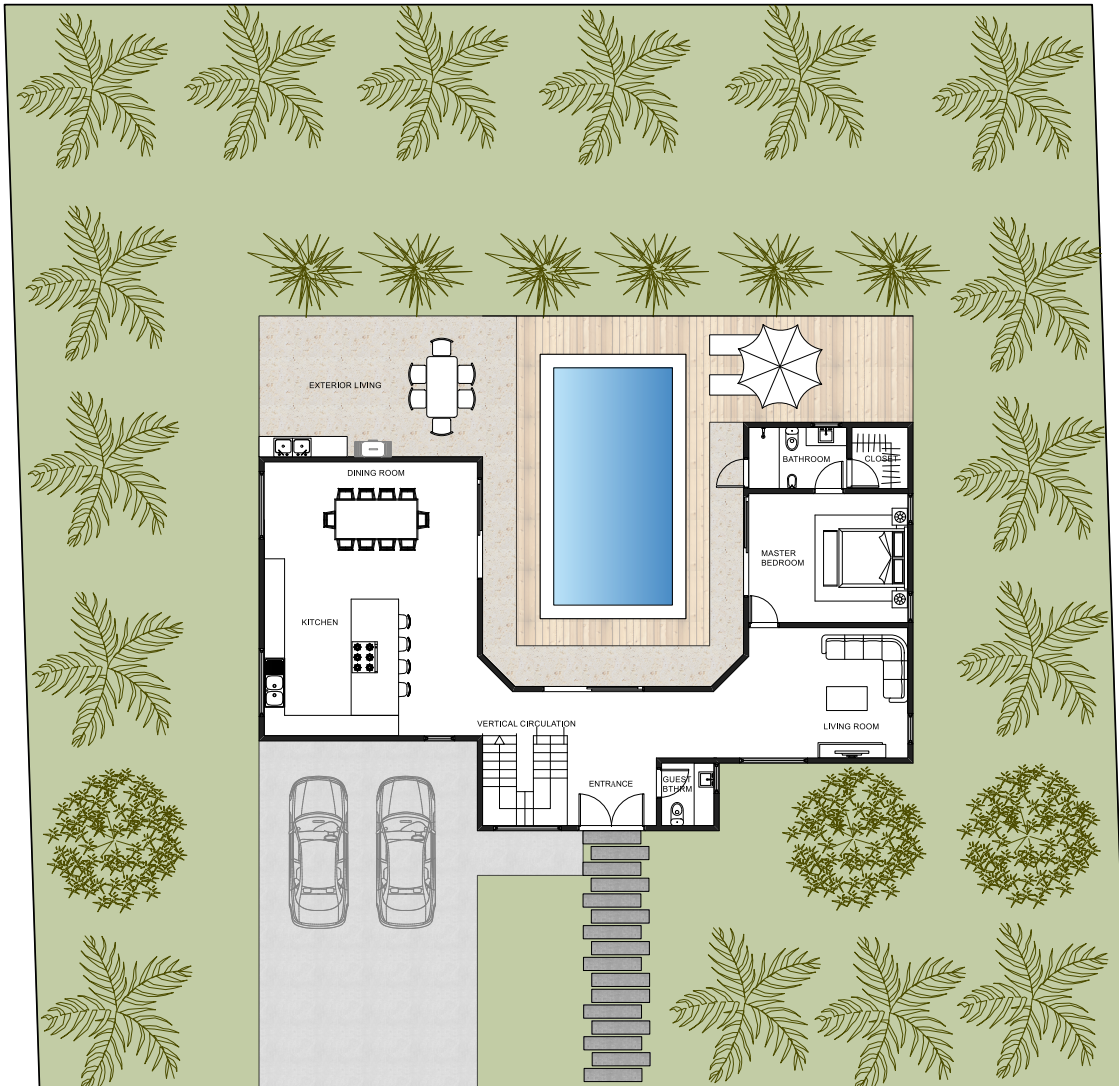
**LEeward**  
RESERVE

**PEARL HOUSE**

MAIN HOUSE - 1,561.84 sq ft.

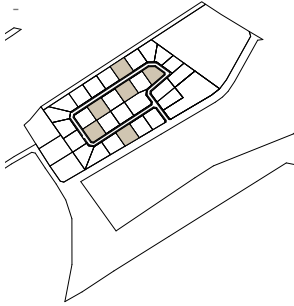
FIRST FLOOR AMENITIES

- Living Room
- Dining Room
- Kitchen
- Master Bedroom
- Exterior Living
- Pool



FIRST ARCHITECTURAL FLOOR PLAN  
Esc. 1:150

**PEARL HOUSE**  
SECOND FLOOR-PLAN  
MONITOR



**LEeward**  
RESERVE

**PEARL HOUSE**

MAIN HOUSE - 1,376 sq ft.

SECOND FLOOR AMENITIES

- Three Master Bedroom
- Laundry
- Linen Closet
- Working space



SECOND ARCHITECTURAL FLOOR PLAN  
Esc. 1:200

PEARL HOUSE  
ELEVATIONS

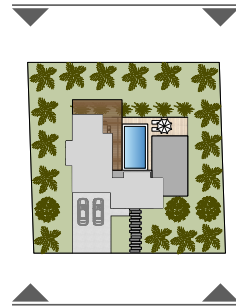
# LEEWARD RESERVE



RUNAWAY  
FRONT ELEVATION



RUNAWAY  
REAR ELEVATION



MONITOR

# LEEWARD RESERVE

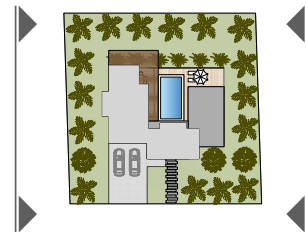
## PEARL HOUSE ELEVATIONS



RUNAWAY  
RIGHT SIDE ELEVATION



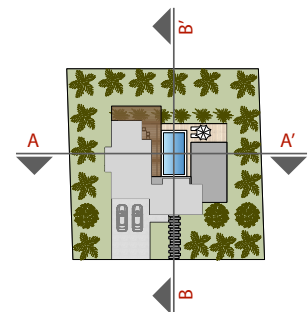
RUNAWAY  
LEFT SIDE ELEVATION



MONITOR

PEARL HOUSE  
SECTIONS

LEEWARD  
RESERVE



# LEEWARD RESERVE

## PEARL HOUSE ISOMETRIC VIEWS



RUNAWAY  
FRONT AND SIDE ISOMETRIC VIEW



RUNAWAY  
BACK AND SIDE ISOMETRIC VIEW