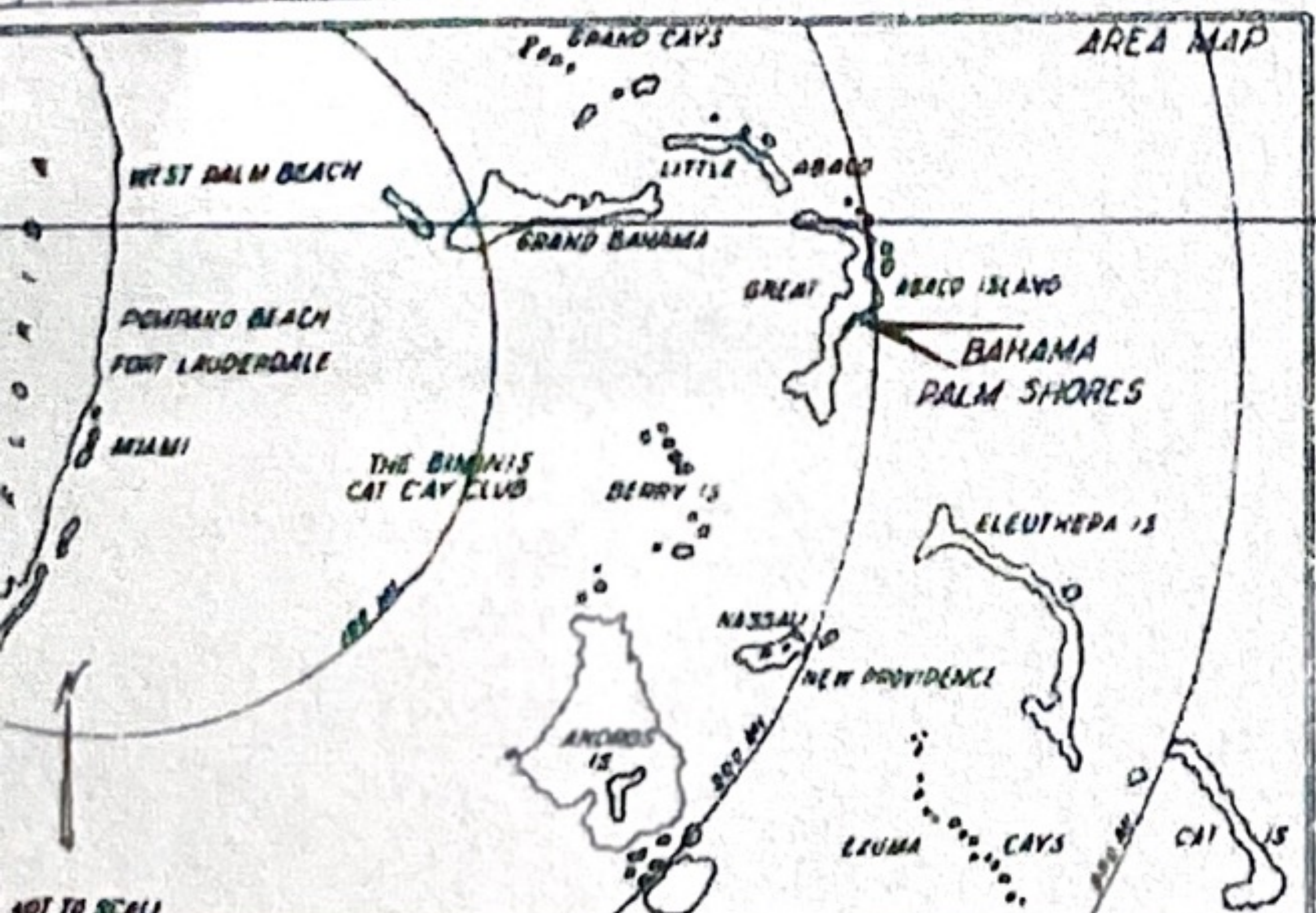
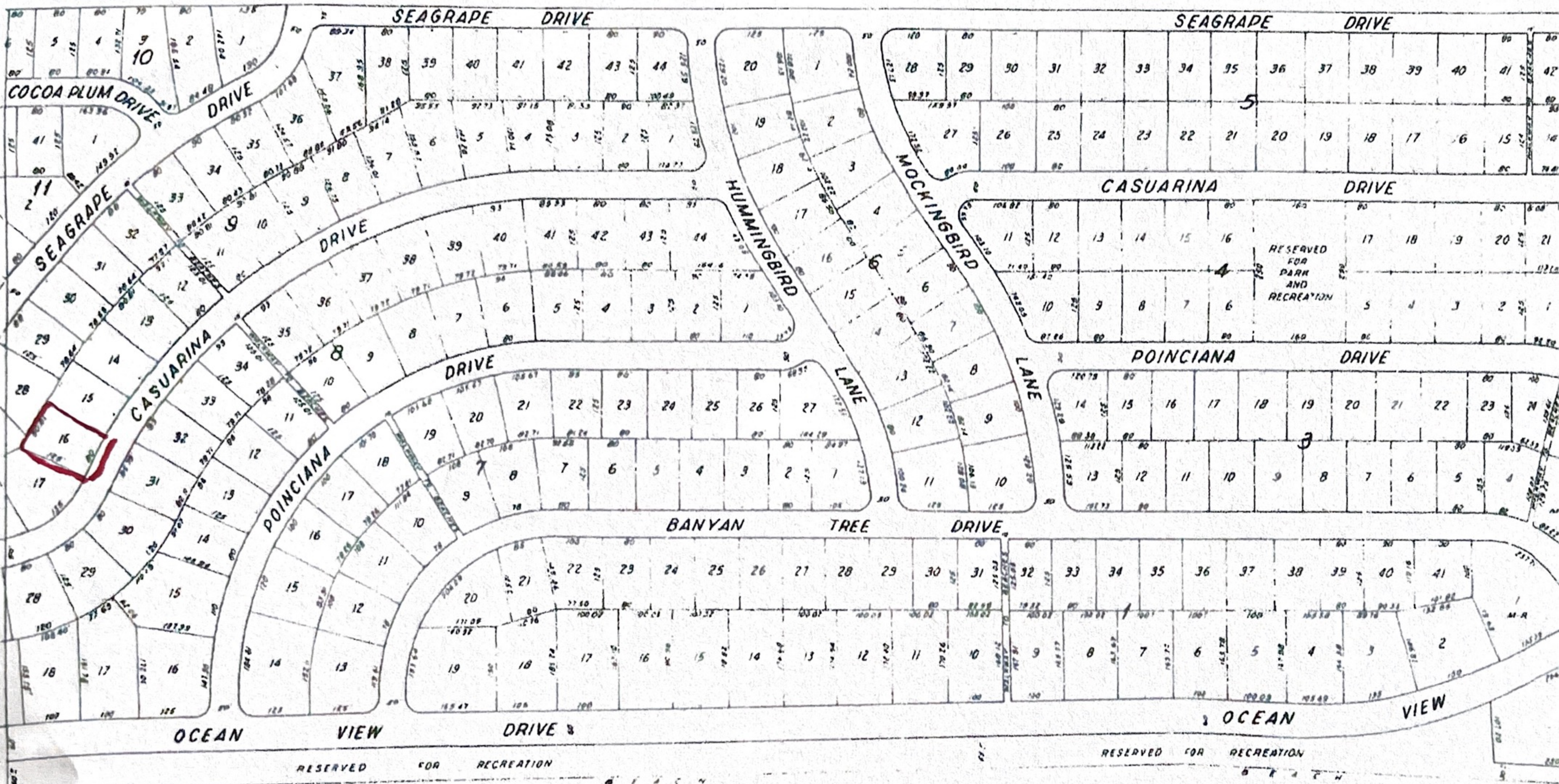


NOTES CORNER (OT DIMENSIONS ARE TO THE INTERSECTION OF BLOCK LINES EXTENDED UNLESS OTHERWISE SHOWN



US ADDRESS
 The Nine Fifty Building
 950 North Federal Highway
 Pompano Beach, Florida

SITE ADDRESS
 Sea Breezes Limited
 Marsh Harbour, Great Abaco



Section 2

A subdivision known as *BAHAMA PALM SHORES* located in the area known as High Banks, approximately six miles westward of the settlement of Cherokee Sound and approximately 16 1/2 miles southwards of Marsh Harbour International Airport, and on the southeasterly (Atlantic) coast of the island of Great Abaco, Bahamas

Concrete monuments with iron rods shall be set at the corners of every homesite

Surveyed by LTD Surveying & Engineering Ltd, Nassau, Bahamas