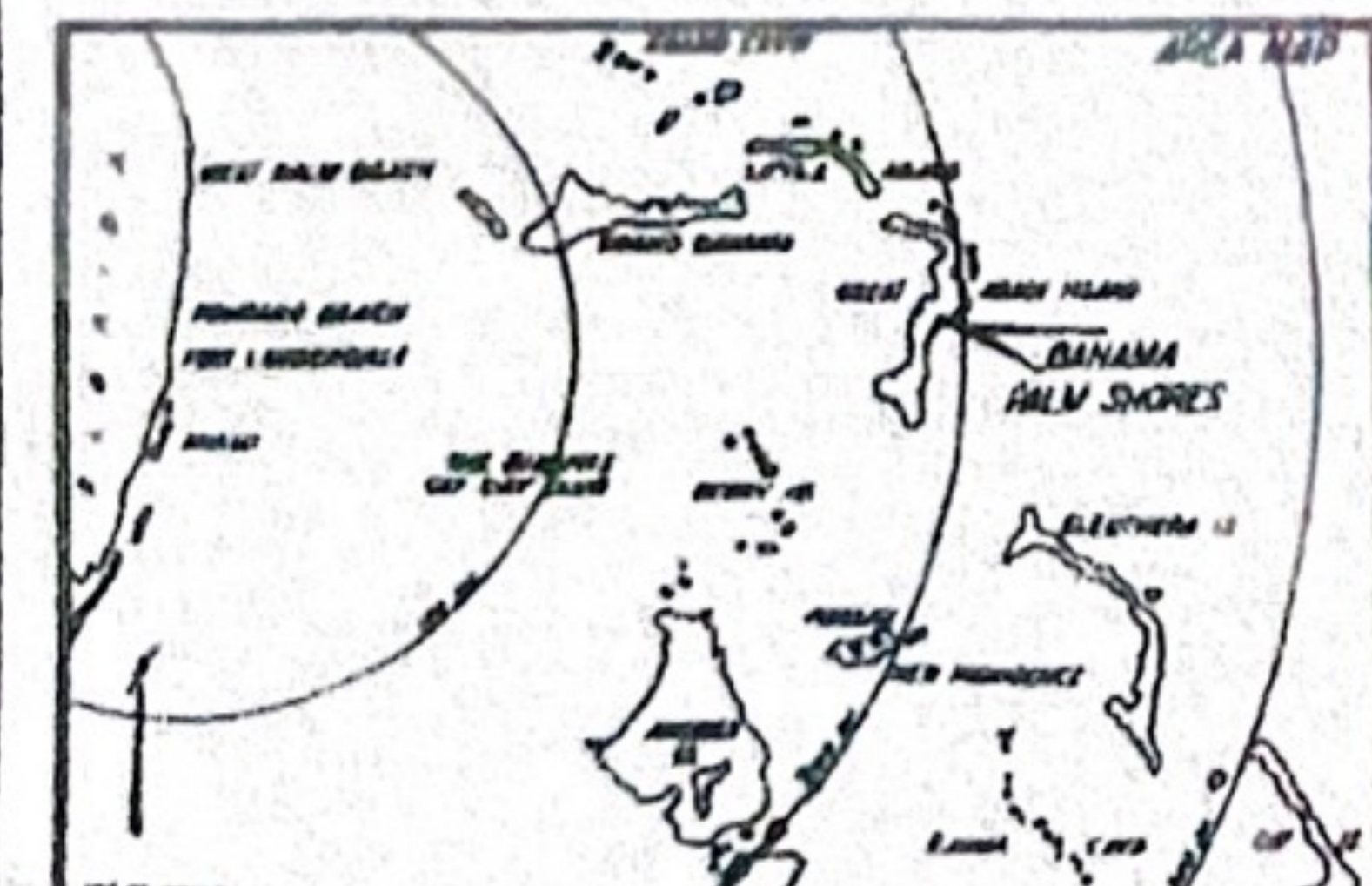
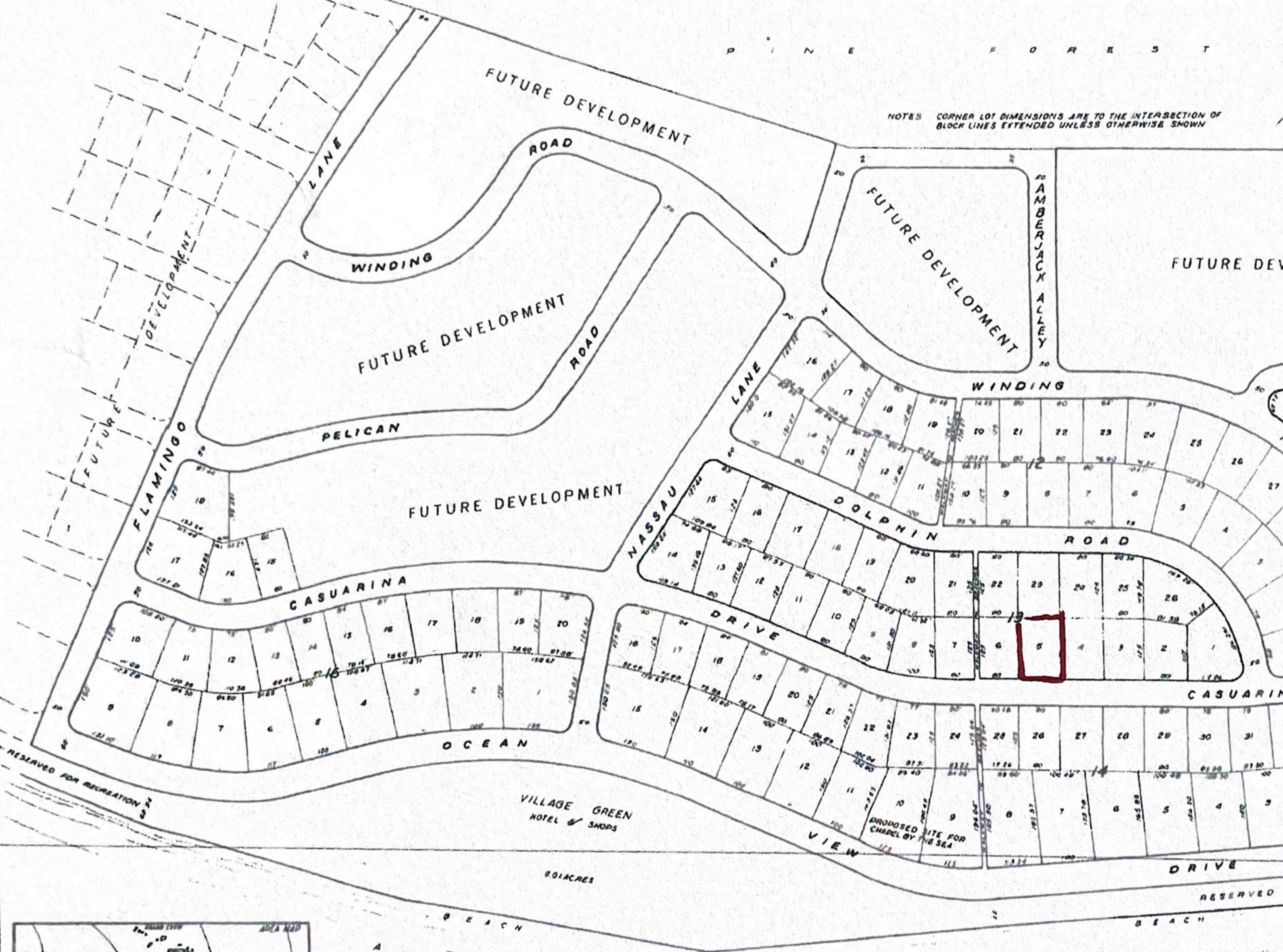


NOTES CORNER LOT DIMENSIONS ARE TO THE INTERSECTION OF BLOCK LINES EXTENDED UNLESS OTHERWISE SHOWN



US ADDRESS
 The Nine Fifty Building
 950 North Federal Highway
 Pompano Beach, Florida
 SITE ADDRESS
 Sea Breezes Limited
 Marsh Harbour, Great Abaco

Section 3



A subdivision known as BAHAMA PALM SHORES known as High Banks, approximately 311 and one half settlement of Cherokee Sound and approximately of Marsh Harbour International Airport and on the coast of the island of Great Abaco, Bahamas. Concrete monuments with iron rods shall be set