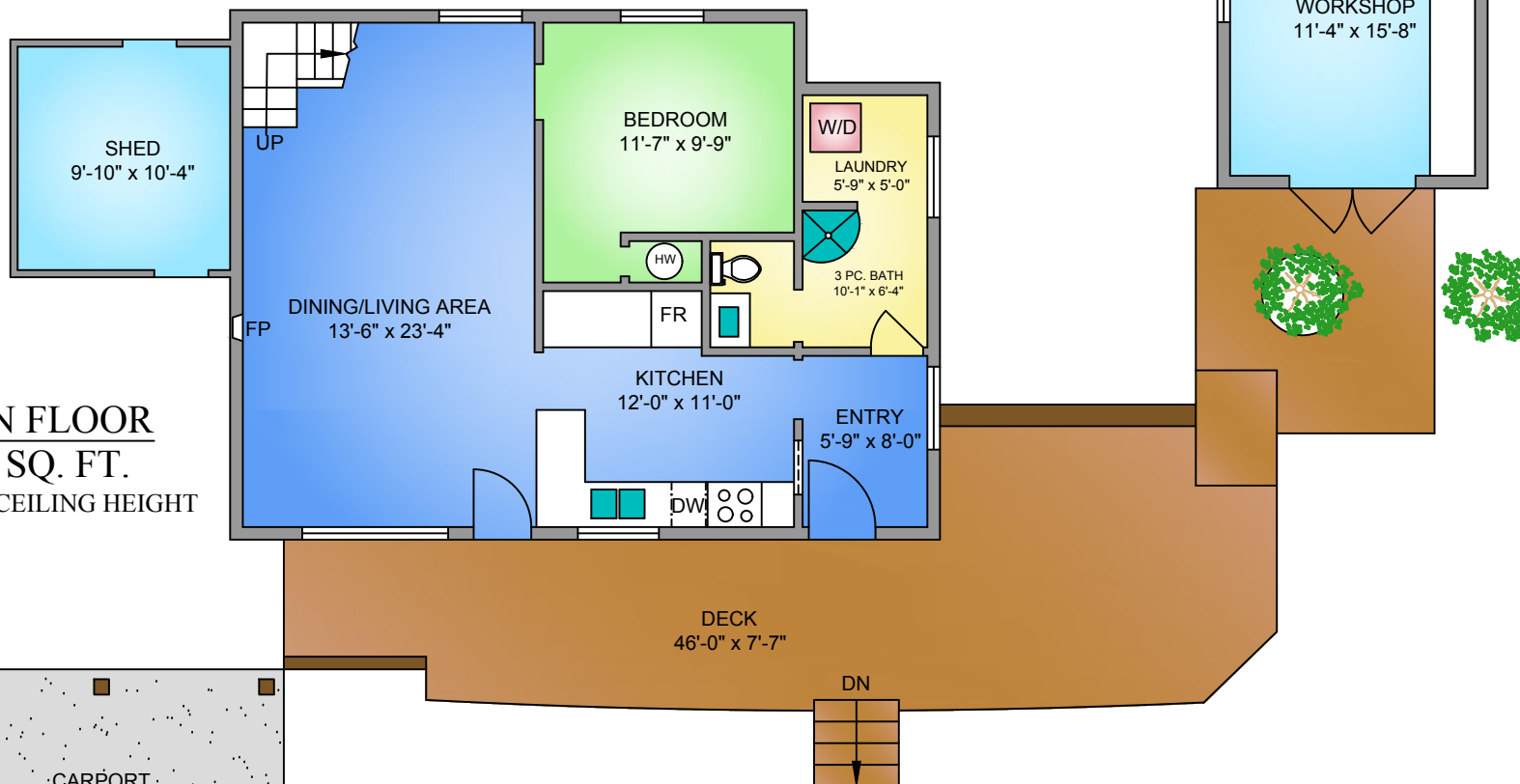


UPPER FLOOR
435 SQ. FT.
9'-6" VAULTED CEILING

MAIN FLOOR
785 SQ. FT.
8'-0"-16'-0" CEILING HEIGHT



NORTH



1690 WILMOT AVENUE APRIL 15, 2022 PREPARED FOR THE EXCLUSIVE USE OF KIM JOHANNSSEN. PLANS MAY NOT BE 100% ACCURATE, IF CRITICAL BUYER TO VERIFY.			
FLOOR	TOTAL	AREA (SQ. FT.)	
		FINISHED	DECK / PATIO
MAIN	785	785	532
UPPER	435	435	-
TOTAL	1220	1220	532