

THE VILLAS AT SILVERTIP

BY ROCKWOOD CUSTOM HOMES

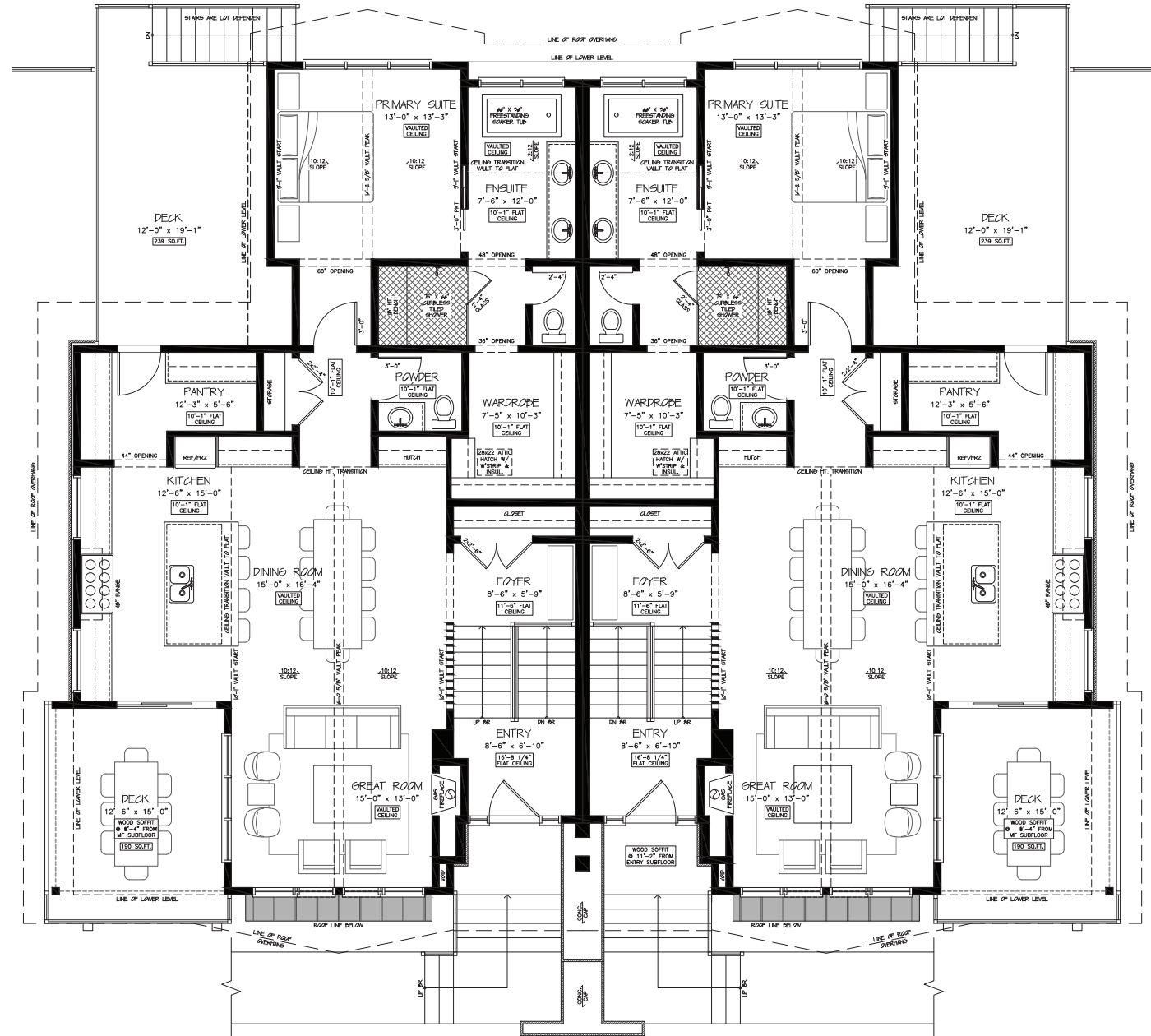
THE THREE SISTERS BUNGALOWS *Faith, Hope and Charity*

TOTAL DEVELOPED AREA 2,899 SQ. FT.
MAIN LEVEL 1,594 SQ. FT.
LOWER LEVEL 1,305 SQ. FT.

DIMENSIONS

| | |
|-------------------|-----------------|
| Great Room: | 15'-0" x 13'-0" |
| Dining Room: | 15'-0" x 16'-4" |
| Kitchen: | 12'-6" x 15'-0" |
| Pantry: | 12'-3" x 5'-6" |
| Entry: | 8'-6" x 6'-10" |
| Foyer: | 8'-6" x 5'-9" |
| Covered Deck: | 12'-6" x 15'-0" |
| BBQ Deck: | 12'-0" x 19'-1" |
| Primary Suite: | 13'-0" x 13'-3" |
| Ensuite: | 7'-6" x 12'-0" |
| Wardrobe: | 7'-5" x 10'-3" |
| Double Garage: | 22'-4" x 19'-1" |
| Mud Room/Laundry: | 7'-7" x 12'-8" |
| Bedroom 2: | 11'-8" x 12'-4" |
| Bedroom 3: | 11'-0" x 11'-0" |
| Family Room: | 13'-0" x 13'-0" |
| Games Area: | 14'-0" x 9'-6" |

MAIN LEVEL



SILVERTIP
CANMORE • ALBERTA

THE VILLAS AT SILVERTIP

BY ROCKWOOD CUSTOM HOMES

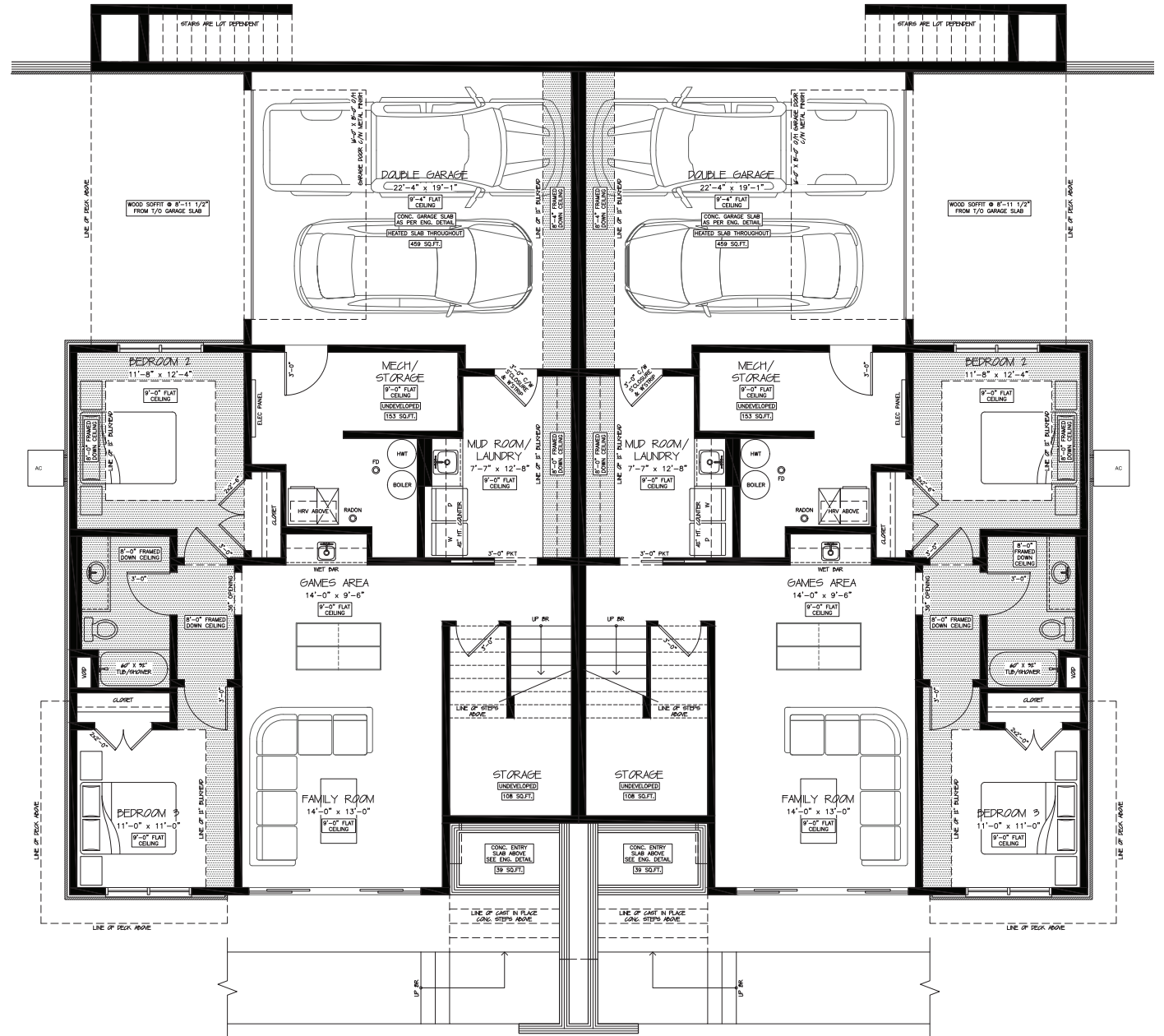
THE THREE SISTERS BUNGALOWS Faith, Hope and Charity

| | |
|-----------------------------|----------------------|
| TOTAL DEVELOPED AREA | 2,899 SQ. FT. |
| MAIN LEVEL | 1,594 SQ. FT. |
| LOWER LEVEL | 1,305 SQ. FT. |

DIMENSIONS

| | |
|-------------------|-----------------|
| Great Room: | 15'-0" x 13'-0" |
| Dining Room: | 15'-0" x 16'-4" |
| Kitchen: | 12'-6" x 15'-0" |
| Pantry: | 12'-3" x 5'-6" |
| Entry: | 8'-6" x 6'-10" |
| Foyer: | 8'-6" x 5'-9" |
| Covered Deck: | 12'-6" x 15'-0" |
| BBQ Deck: | 12'-0" x 19'-1" |
| Primary Suite: | 13'-0" x 13'-3" |
| Ensuite: | 7'-6" x 12'-0" |
| Wardrobe: | 7'-5" x 10'-3" |
| Double Garage: | 22'-4" x 19'-1" |
| Mud Room/Laundry: | 7'-7" x 12'-8" |
| Bedroom 2: | 11'-8" x 12'-4" |
| Bedroom 3: | 11'-0" x 11'-0" |
| Family Room: | 13'-0" x 13'-0" |
| Games Area: | 14'-0" x 9'-6" |

LOWER LEVEL



ROCKWOOD
CUSTOM HOMES



SILVERTIP
CANMORE • ALBERTA