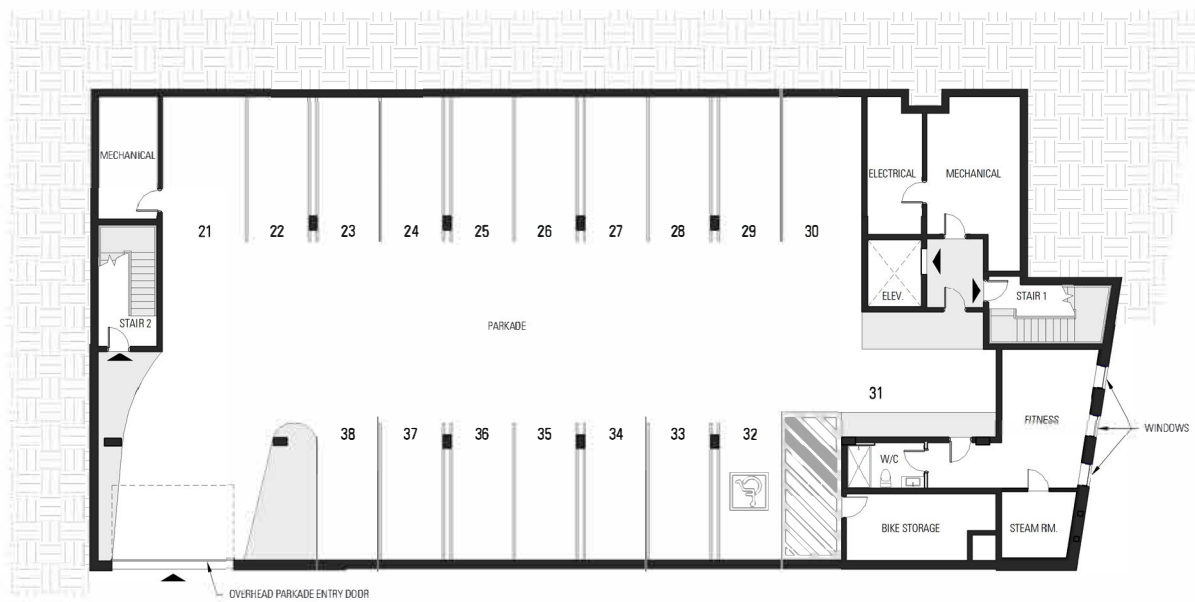


As supplied by developer



MOUNTAIN AVENUE GOLDLAND - EAST BUILDING

PARKADE PLAN

Disclaimer: The above content is for information purposes and represents design intent only. It is not a true representation of the final built condition. The Developer reserves the right to alter/change or substitute alternates. These may include but are not limited to appliance and lighting models, interior finishes and/or materials with alternatives that are of like or similar quality. Any indication of dimensions and/or area is for information purposes only and subject to actual built construction. Final dimensions, square area estimates, measurements, floor plan and configuration may vary as part of the Building Permit process, construction, and installation at the Developer's discretion. The Developer reserves the right to make changes to the project design such as floor plans, specifications, interiors, and exterior landscaping.



UNIT 101	75.4 m²	811 ft²
UNIT 102	57.0 m²	614 ft²
UNIT 103	57.0 m²	614 ft²
UNIT 104	73.9 m²	796 ft²
UNIT 105	88.6 m²	954 ft²
UNIT 106	55.9 m²	612 ft²
UNIT 107	55.9 m²	612 ft²
UNIT 108	82.4 m²	887 ft²
UNIT 109	64.3 m²	692 ft²
UNIT 201	76.7 m²	847 ft²
UNIT 202	74.5 m²	802 ft²
UNIT 203	55.9 m²	612 ft²
UNIT 204	55.9 m²	612 ft²
UNIT 205	77.3 m²	832 ft²
UNIT 206	66.7 m²	755 ft²
UNIT 207	55.9 m²	613 ft²
UNIT 208	55.9 m²	613 ft²
UNIT 209	62.5 m²	686 ft²
UNIT 210	60.6 m²	686 ft²
UNIT 301	74.9 m²	850 ft²
UNIT 302	74.5 m²	802 ft²
UNIT 303	55.9 m²	612 ft²
UNIT 304	55.9 m²	612 ft²
UNIT 305	77.3 m²	832 ft²
UNIT 306	88.6 m²	954 ft²
UNIT 307	55.9 m²	612 ft²
UNIT 308	55.9 m²	612 ft²
UNIT 309	62.4 m²	687 ft²
UNIT 310	80.7 m²	869 ft²
UNIT 401	58.5 m²	630 ft²
UNIT 402	70.7 m²	761 ft²
UNIT 403	67.2 m²	724 ft²
UNIT 404	70.3 m²	757 ft²
UNIT 405	64.9 m²	714 ft²
2394.0 m² 25,661 ft²		



MOUNTAIN AVENUE GOLDLAND - EAST BUILDING

MAIN FLOOR PLAN

Disclaimer: The above content is for information purposes and represents design intent only. It is not a true representation of the final built condition. The Developer reserves the right to alter/change or substitute alternates. These may include but are not limited to appliance and lighting models, interior finishes and/or materials with alternatives that are of like or similar quality. Any indication of dimensions and/or area is for information purposes only and subject to actual built construction. Final dimensions, square area estimates, measurements, floor plan and configuration may vary as part of the Building Permit process, construction, and installation at the Developer's discretion. The Developer reserves the right to make changes to the project design such as floor plans, specifications, interiors, and exterior landscaping.



UNIT 101	75.4 m ²	811 ft ²
UNIT 102	57.0 m ²	614 ft ²
UNIT 103	57.0 m ²	614 ft ²
UNIT 104	73.9 m ²	796 ft ²
UNIT 105	88.6 m ²	954 ft ²
UNIT 106	55.9 m ²	602 ft ²
UNIT 107	55.9 m ²	602 ft ²
UNIT 108	52.4 m ²	567 ft ²
UNIT 109	54.3 m ²	585 ft ²
UNIT 201	76.7 m ²	832 ft ²
UNIT 202	74.5 m ²	802 ft ²
UNIT 203	55.9 m ²	602 ft ²
UNIT 204	55.9 m ²	602 ft ²
UNIT 205	77.3 m ²	832 ft ²
UNIT 206	66.7 m ²	721 ft ²
UNIT 207	55.9 m ²	602 ft ²
UNIT 208	55.9 m ²	602 ft ²
UNIT 209	62.5 m ²	674 ft ²
UNIT 210	60.6 m ²	656 ft ²
UNIT 301	74.5 m ²	802 ft ²
UNIT 302	74.5 m ²	802 ft ²
UNIT 303	55.9 m ²	602 ft ²
UNIT 304	55.9 m ²	602 ft ²
UNIT 305	77.3 m ²	832 ft ²
UNIT 306	88.6 m ²	954 ft ²
UNIT 307	55.9 m ²	602 ft ²
UNIT 308	55.9 m ²	602 ft ²
UNIT 309	62.5 m ²	674 ft ²
UNIT 310	60.6 m ²	656 ft ²
UNIT 401	55.9 m ²	602 ft ²
UNIT 402	70.7 m ²	761 ft ²
UNIT 403	67.2 m ²	724 ft ²
UNIT 404	70.3 m ²	757 ft ²
UNIT 405	64.9 m ²	700 ft ²
2384.0 m ²		25,661 ft ²



MOUNTAIN AVENUE GOLDLAND - EAST BUILDING

SECOND FLOOR PLAN

Disclaimer: The above content is for information purposes and represents design intent only. It is not a true representation of the final built condition. The Developer reserves the right to alter/change or substitute alternatives. These may include but are not limited to appliance and lighting models, interior finishes and materials with alternatives that are of like or similar quality. Any indication of dimensions and/or area is for information purposes only and subject to actual built construction. Final dimensions, square area estimates, measurements, floor plan and configuration may vary as part of the Building Permit process, construction, and installation at the Developer's discretion. The Developer reserves the right to make changes to the project design such as floor plans, specifications, interiors, and exterior landscaping.



UNIT 101	75.4 m²	811 ft²
UNIT 102	57.0 m²	614 ft²
UNIT 103	57.0 m²	614 ft²
UNIT 104	73.9 m²	796 ft²
UNIT 105	88.6 m²	954 ft²
UNIT 106	55.9 m²	612 ft²
UNIT 107	55.9 m²	612 ft²
UNIT 108	82.4 m²	887 ft²
UNIT 109	64.3 m²	692 ft²
UNIT 201	76.7 m²	847 ft²
UNIT 202	74.5 m²	802 ft²
UNIT 203	55.9 m²	612 ft²
UNIT 204	55.9 m²	612 ft²
UNIT 205	77.3 m²	832 ft²
UNIT 206	66.7 m²	720 ft²
UNIT 207	55.9 m²	612 ft²
UNIT 208	55.9 m²	612 ft²
UNIT 209	62.5 m²	674 ft²
UNIT 210	60.6 m²	656 ft²
UNIT 301	74.5 m²	802 ft²
UNIT 302	74.5 m²	802 ft²
UNIT 303	55.9 m²	612 ft²
UNIT 304	55.9 m²	612 ft²
UNIT 305	77.3 m²	832 ft²
UNIT 306	88.6 m²	954 ft²
UNIT 307	55.9 m²	612 ft²
UNIT 308	55.9 m²	612 ft²
UNIT 309	62.4 m²	674 ft²
UNIT 310	80.7 m²	868 ft²
UNIT 401	58.5 m²	630 ft²
UNIT 402	70.7 m²	761 ft²
UNIT 403	67.2 m²	724 ft²
UNIT 404	70.3 m²	757 ft²
UNIT 405	64.9 m²	701 ft²
2384.0 m²		25,661 ft²



MOUNTAIN AVENUE GOLDLAND - EAST BUILDING

THIRD FLOOR PLAN

Disclaimer: The above content is for information purposes and represents design intent only. It is not a true representation of the final built condition. The Developer reserves the right to alter/change or substitute alternatives. These may include but are not limited to appliance and lighting models, interior finishes and materials with alternatives that are of like or similar quality. Any indication of dimensions and/or area is for information purposes only and subject to actual built construction. Final dimensions, square area estimates, measurements, floor plan and configuration may vary as part of the Building Permit process, construction, and installation at the Developer's discretion. The Developer reserves the right to make changes to the project design such as floor plans, specifications, interiors, and exterior landscaping.



UNIT 101	75.4 m²	811 ft²
UNIT 102	57.0 m²	614 ft²
UNIT 103	57.0 m²	614 ft²
UNIT 104	73.8 m²	796 ft²
UNIT 105	88.6 m²	954 ft²
UNIT 106	55.9 m²	612 ft²
UNIT 107	55.9 m²	612 ft²
UNIT 108	82.4 m²	887 ft²
UNIT 109	64.3 m²	692 ft²
UNIT 201	78.7 m²	847 ft²
UNIT 202	74.5 m²	802 ft²
UNIT 203	55.9 m²	612 ft²
UNIT 204	55.9 m²	612 ft²
UNIT 205	77.3 m²	832 ft²
UNIT 206	66.7 m²	720 ft²
UNIT 207	55.9 m²	612 ft²
UNIT 208	55.9 m²	612 ft²
UNIT 209	62.5 m²	674 ft²
UNIT 210	60.6 m²	656 ft²
UNIT 301	74.9 m²	809 ft²
UNIT 302	74.5 m²	802 ft²
UNIT 303	55.9 m²	612 ft²
UNIT 304	55.9 m²	612 ft²
UNIT 305	77.3 m²	832 ft²
UNIT 306	88.6 m²	954 ft²
UNIT 307	55.9 m²	612 ft²
UNIT 308	55.9 m²	612 ft²
UNIT 309	62.5 m²	674 ft²
UNIT 310	80.7 m²	868 ft²
UNIT 401	58.5 m²	630 ft²
UNIT 402	70.7 m²	761 ft²
UNIT 403	67.2 m²	724 ft²
UNIT 404	70.3 m²	757 ft²
UNIT 405	64.9 m²	699 ft²
2384.0 m²		25,661 ft²



MOUNTAIN AVENUE GOLDLAND - EAST BUILDING

FOURTH FLOOR PLAN

Disclaimer: The above content is for information purposes and represents design intent only. It is not a true representation of the final built condition. The Developer reserves the right to alter/change or substitute alternatives. These may include but are not limited to appliance and lighting models, interior finishes and/or materials with alternatives that are of like or similar quality. Any indication of dimensions and/or area is for information purposes only and subject to actual built construction. Final dimensions, square area estimates, measurements, floor plan and configuration may vary as part of the Building Permit process, construction, and installation at the Developer's discretion. The Developer reserves the right to make changes to the project design such as floor plans, specifications, interiors, and exterior landscaping.



MOUNTAIN AVENUE GOLDLAND - EAST BUILDING

UNIT D (811 SQ. FT.)

Disclaimer: The above content is for information purposes and represents design intent only. It is not a true representation of the final built condition. The Developer reserves the right to alter/change or substitute alternates. These may include but are not limited to appliance and lighting models, interior finishes and/or materials with alternatives that are of like or similar quality. Any indication of dimensions and/or area is for information purposes only and subject to actual built construction. Final dimensions, square area estimates, measurements, floor plan and configuration may vary as part of the Building Permit process, construction, and installation at the Developer's discretion. The Developer reserves the right to make changes to the project design such as floor plans, specifications, interiors, and exterior landscaping.



MOUNTAIN AVENUE GOLDLAND - EAST BUILDING

UNIT E (614 SQ. FT.)

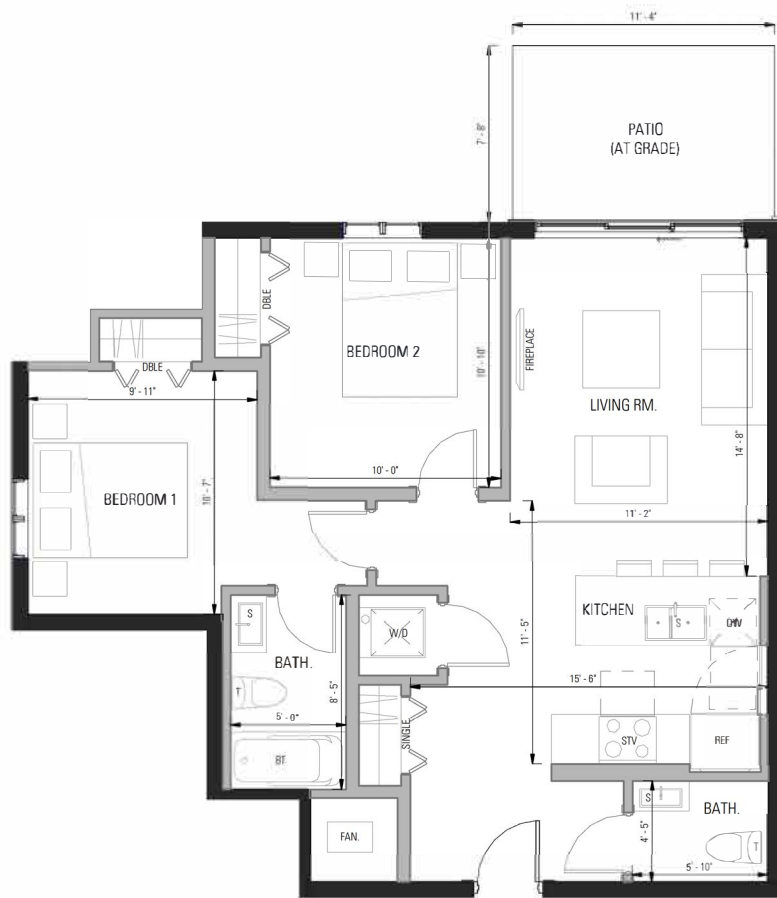
Disclaimer: The above content is for information purposes and represents design intent only. It is not a true representation of the final built condition. The Developer reserves the right to alter/change or substitute alternates. These may include but are not limited to appliance and lighting models, interior finishes and/or materials with alternatives that are of like or similar quality. Any indication of dimensions and/or area is for information purposes only and subject to actual built construction. Final dimensions, square area estimates, measurements, floor plan and configuration may vary as part of the Building Permit process, construction, and installation at the Developer's discretion. The Developer reserves the right to make changes to the project design such as floor plans, specifications, interiors, and exterior landscaping.



MOUNTAIN AVENUE GOLDLAND - EAST BUILDING

UNIT E-R (612 SQ. FT.)

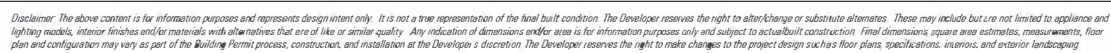
Disclaimer: The above content is for information purposes and represents design intent only. It is not a true representation of the final built condition. The Developer reserves the right to alter/change or substitute alternates. These may include but are not limited to appliance and lighting models, interior finishes and/or materials with alternatives that are of like or similar quality. Any indication of dimensions and/or area is for information purposes only and subject to actual built construction. Final dimensions, square area estimates, measurements, floor plan and configuration may vary as part of the Building Permit process, construction, and installation at the Developer's discretion. The Developer reserves the right to make changes to the project design such as floor plans, specifications, interiors, and exterior landscaping.

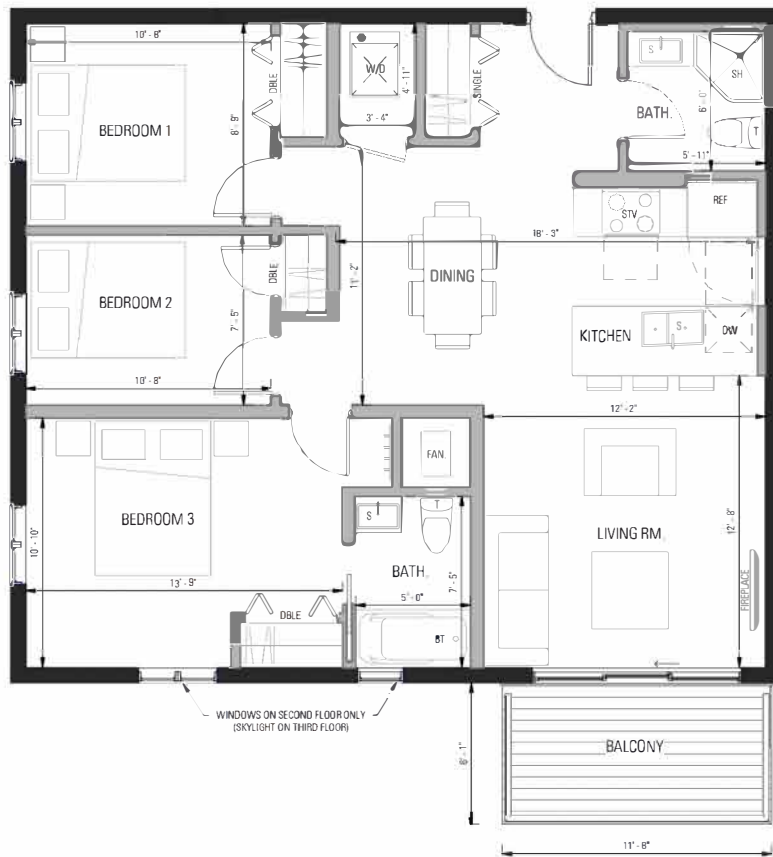


MOUNTAIN AVENUE GOLDLAND - EAST BUILDING

UNIT F (796 SQ. FT.)

Disclaimer: The above content is for information purposes and represents design intent only. It is not a true representation of the final built condition. The Developer reserves the right to alter/change or substitute alternates. These may include but are not limited to appliance and lighting models, interior finishes and/or materials with alternatives that are of like or similar quality. Any indication of dimensions and/or areas is for information purposes only and subject to actual built construction. Final dimensions, square area estimates, measurements, floor plan and configuration may vary as part of the Building Permit process, construction, and installation at the Developer's discretion. The Developer reserves the right to make changes to the project design such as floor plans, specifications, interiors, and exterior landscaping.

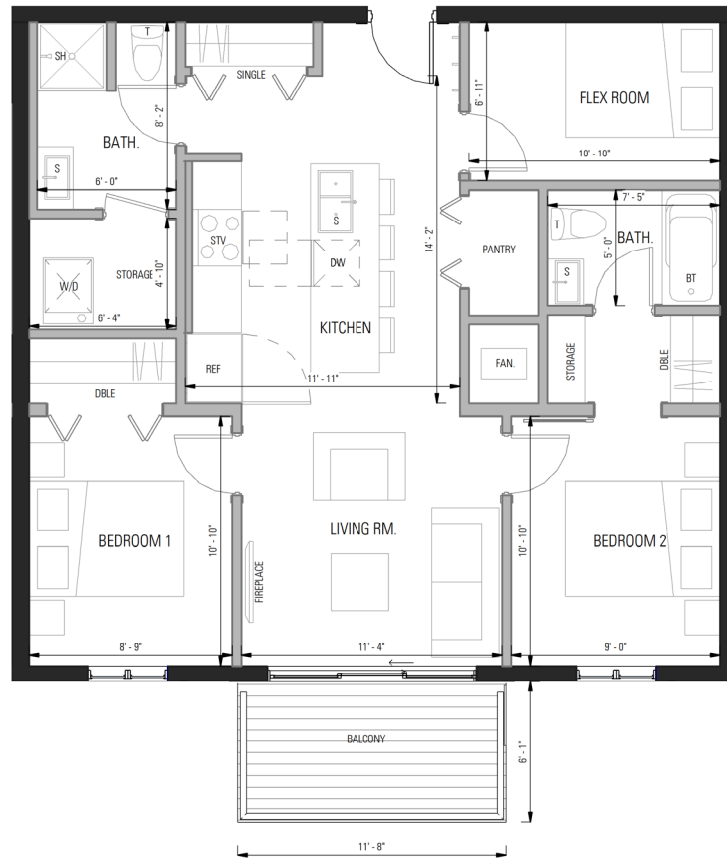




MOUNTAIN AVENUE GOLDLAND - EAST BUILDING

UNIT G (954 SQ. FT.)

Disclaimer: The above content is for information purposes and represents design intent only. It is not a true representation of the final built condition. The Developer reserves the right to alter/change or substitute alternates. These may include but are not limited to appliance and lighting models, interior finishes and/or materials with alternatives that are of like or similar quality. Any indication of dimensions and/or area is for information purposes only and subject to actual built construction. Final dimensions, square area estimates, measurements, floor plan and configuration may vary as part of the Building Permit process, construction, and installation at the Developer's discretion. The Developer reserves the right to make changes to the project design such as floor plans, specifications, interiors, and exterior landscaping.



MOUNTAIN AVENUE GOLDFIELD - EAST BUILDING

UNIT H (888 SQ. FT.)

Disclaimer: The above content is for information purposes and represents design intent only. It is not a true representation of the final built condition. The Developer reserves the right to alter/charge or substitute alternates. These may include but are not limited to appliance and lighting models, interior finishes and/or materials with alternatives that are of like or similar quality. Any indication of dimensions and/or area is for information purposes only and subject to actual built construction. Final dimensions, square area estimates, measurements, floor plan and configuration may vary as part of the Building Permit process, construction, and installation at the Developer's discretion. The Developer reserves the right to make changes to the project design such as floor plans, specifications, interiors, and exterior landscaping.

NOTE: GROSS FLOOR AREA TOTAL MEASURED TO FACE OF EXTERIOR CLADDING AND CENTERLINE OF COMMON WALLS



MOUNTAIN AVENUE GOLDLAND - EAST BUILDING

UNIT J (692 SQ. FT.)

Disclaimer: The above content is for information purposes and represents design intent only. It is not a true representation of the final built condition. The Developer reserves the right to alter/charge or substitute alternates. These may include but are not limited to appliance and lighting models, interior finishes and/or materials with alternatives that are of like or similar quality. Any indication of dimensions and/or area is for information purposes only and subject to actual built construction. Final dimensions, square area estimates, measurements, floor plan and configuration may vary as part of the Building Permit process, construction, and installation at the Developer's discretion. The Developer reserves the right to make changes to the project design such as floor plans, specifications, interiors, and exterior landscaping.

NOTE: GROSS FLOOR AREA IS TOTAL MEASURED TO FACE OF EXTERIOR CLADDING AND CENTERLINE OF COMMON WALLS



MOUNTAIN AVENUE GOLDFIELD - EAST BUILDING

UNIT K (868 SQ. FT.)

Disclaimer: The above content is for information purposes and represents design intent only. It is not a true representation of the final built condition. The Developer reserves the right to alter/charge or substitute alternates. These may include but are not limited to appliance and lighting models, interior finishes and/or materials with alternatives that are of like or similar quality. Any indication of dimensions and/or area is for information purposes only and subject to actual built construction. Final dimensions, square area estimates, measurements, floor plan and configuration may vary as part of the Building Permit process, construction, and installation at the Developer's discretion. The Developer reserves the right to make changes to the project design such as floor plans, specifications, interiors, and exterior landscaping.

NOTE: GROSS FLOOR AREA TOTAL MEASURED TO FACE OF EXTERIOR CLADDING AND CENTERLINE OF COMMON WALLS



MOUNTAIN AVENUE GOLDFIELD - EAST BUILDING

UNIT L (847 SQ. FT.)

Disclaimer: The above content is for information purposes and represents design intent only. It is not a true representation of the final built condition. The Developer reserves the right to alter/charge or substitute alternates. These may include but are not limited to appliance and lighting models, interior finishes and/or materials with alternatives that are of like or similar quality. Any indication of dimensions and/or area is for information purposes only and subject to actual built construction. Final dimensions, square area estimates, measurements, floor plan and configuration may vary as part of the Building Permit process, construction, and installation at the Developer's discretion. The Developer reserves the right to make changes to the project design such as floor plans, specifications, interiors, and exterior landscaping.

NOTE: GROSS FLOOR AREA IS TOTAL MEASURED TO FACE OF EXTERIOR CLADDING AND CENTERLINE OF COMMON WALLS



MOUNTAIN AVENUE GOLDLAND - EAST BUILDING

UNIT M (630 SQ. FT.)

Disclaimer: The above content is for information purposes and represents design intent only. It is not a true representation of the final built condition. The Developer reserves the right to alter/charge or substitute alternates. These may include but are not limited to appliance and lighting models, interior finishes and/or materials with alternatives that are of like or similar quality. Any indication of dimensions and/or area is for information purposes only and subject to actual built construction. Final dimensions, square area estimates, measurements, floor plan and configuration may vary as part of the Building Permit process, construction, and installation at the Developer's discretion. The Developer reserves the right to make changes to the project design such as floor plans, specifications, interiors, and exterior landscaping.

NOTE: GROSS FLOOR AREA TOTAL MEASURED TO FACE OF EXTERIOR CLADDING AND CENTERLINE OF COMMON WALLS



MOUNTAIN AVENUE GOLDFIELD - EAST BUILDING

UNIT N (761 SQ. FT.)

Disclaimer: The above content is for information purposes and represents design intent only. It is not a true representation of the final built condition. The Developer reserves the right to alter/charge or substitute alternates. These may include but are not limited to appliance and lighting models, interior finishes and/or materials with alternatives that are of like or similar quality. Any indication of dimensions and/or area is for information purposes only and subject to actual built construction. Final dimensions, square area estimates, measurements, floor plan and configuration may vary as part of the Building Permit process, construction, and installation at the Developer's discretion. The Developer reserves the right to make changes to the project design such as floor plans, specifications, interiors, and exterior landscaping.

NOTE: DASHED FLOOR AREA IS NOT REQUIRED TO BE OF EXTERIOR CLADDING AND CONTAINING OF COMMON WALLS



MOUNTAIN AVENUE GOLDLAND - EAST BUILDING

UNIT N-R (757 SQ. FT.)

Disclaimer: The above content is for information purposes and represents design intent only. It is not a true representation of the final built condition. The Developer reserves the right to alter/charge or substitute alternates. These may include but are not limited to appliance and lighting models, interior finishes and/or materials with alternatives that are of like or similar quality. Any indication of dimensions and/or area is for information purposes only and subject to actual built construction. Final dimensions, square area estimates, measurements, floor plan and configuration may vary as part of the Building Permit process, construction, and installation at the Developer's discretion. The Developer reserves the right to make changes to the project design such as floor plans, specifications, interiors, and exterior landscaping.

NOTE: GROSS FLOOR AREA TOTAL MEASURED TO FACE OF EXTERIOR CLADDING AND CENTERLINE OF COMMON WALLS



MOUNTAIN AVENUE GOLDLAND - EAST BUILDING
UNIT P (724 SQ. FT.)

Disclaimer: The above content is for information purposes and represents design intent only. It is not a true representation of the final built condition. The Developer reserves the right to alter/charge or substitute alternates. These may include but are not limited to appliance and lighting models, interior finishes and/or materials with alternatives that are of like or similar quality. Any indication of dimensions and/or area is for information purposes only and subject to actual built construction. Final dimensions, square area estimates, measurements, floor plan and configuration may vary as part of the Building Permit process, construction, and installation at the Developer's discretion. The Developer reserves the right to make changes to the project design such as floor plans, specifications, interiors, and exterior landscaping.

NOTE: GROSS FLOOR AREA TOTAL MEASURED TO FACE OF EXTERIOR CLADDING AND CENTERLINE OF COMMON WALLS



MOUNTAIN AVENUE GOLDFIELD - EAST BUILDING

UNIT Q (914 SQ. FT.)

Disclaimer: The above content is for information purposes and represents design intent only. It is not a true representation of the final built condition. The Developer reserves the right to alter/charge or substitute alternates. These may include but are not limited to appliance and lighting models, interior finishes and/or materials with alternatives that are of like or similar quality. Any indication of dimensions and/or area is for information purposes only and subject to actual built construction. Final dimensions, square area estimates, measurements, floor plan and configuration may vary as part of the Building Permit process, construction, and installation at the Developer's discretion. The Developer reserves the right to make changes to the project design such as floor plans, specifications, interiors, and exterior landscaping.

NOTE: GROSS FLOOR AREA (GFA) MEASURED TO FACE OF EXTERIOR CLADDING AND CENTERLINE OF COMMON WALLS