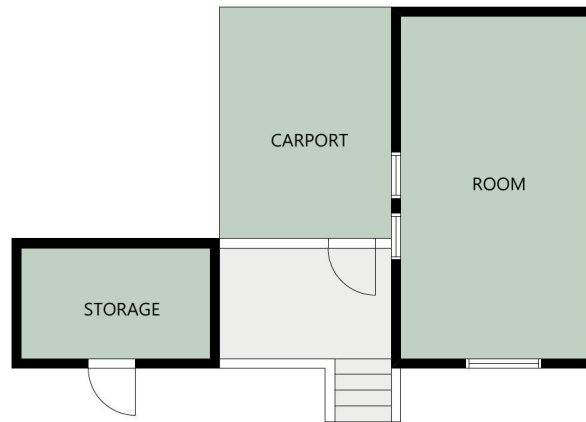
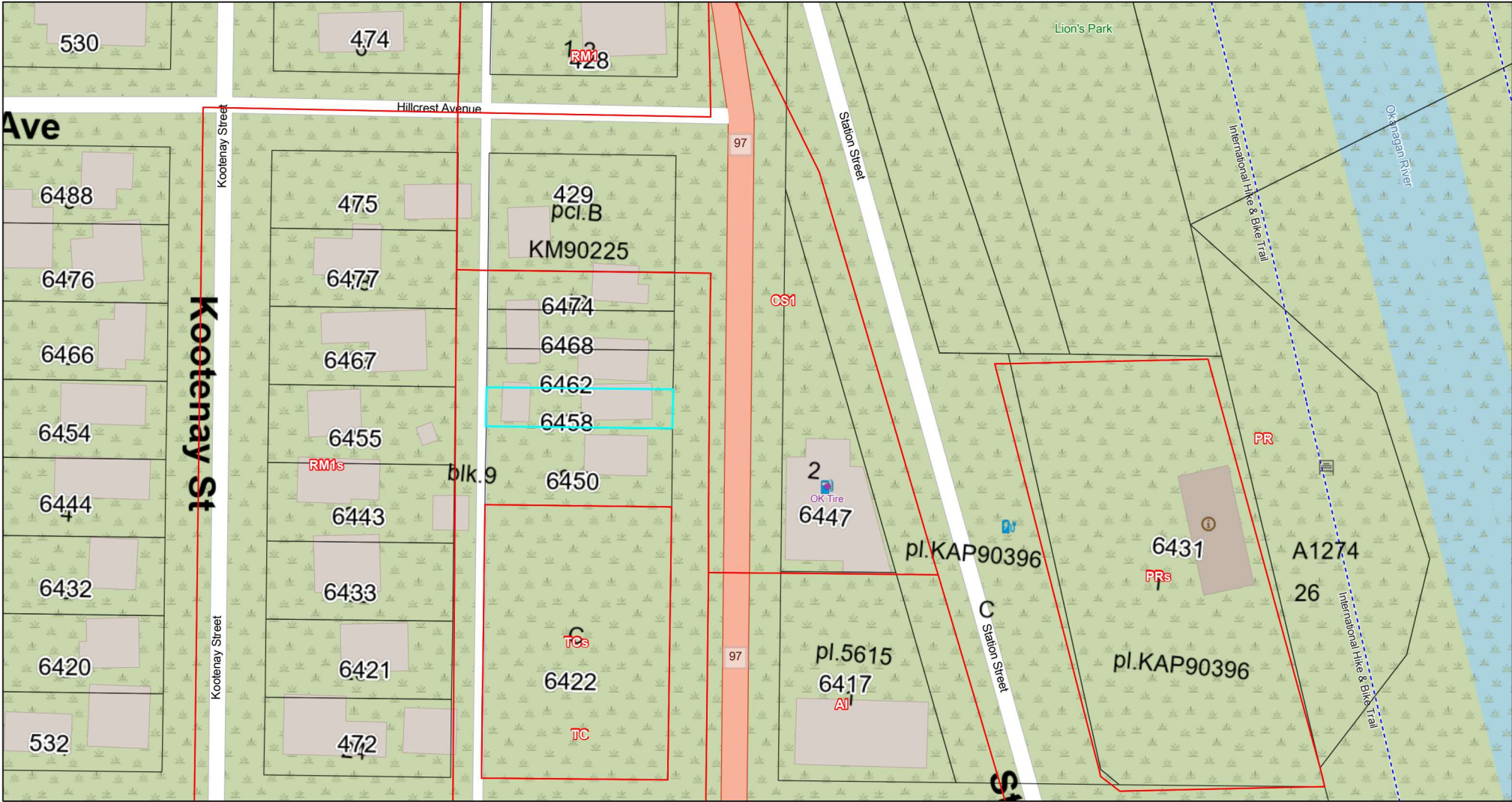


**Home Plan
6458 Main Street**



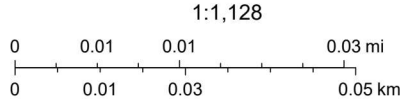
FLOOR 1

Parcel Map



4/29/2024, 3:57:47 PM

- Electoral and Municipal Boundaries
- Zoning
- Cadastral

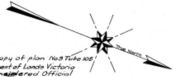


Map data © OpenStreetMap contributors, Microsoft, Facebook, Inc. and its affiliates, Esri Community Maps contributors, Map layer by Esri

TOWNSITE OF OLIVER
PLAN OF A SUBDIVISION OF
PART LOT 77 OF DISTRICT LOT 2450^S
 SIMILKAMEEN DIVISION OF YALE DISTRICT
B.C.

Scale: 100 ft. = 1 in.

STREET NAMES CHANGED SEE PLANS 2451A & B



Certified as a True Copy of plan No. 17261
 as filed in the Department of Lands Victoria
 by the Surveyor-General's Office
 on the 25th day of May 1981
 May 25 1981
 Victoria BC
[Signature]
 Surveyor General

NOTE: Allotments delineated from the subdivision
 of District Lot 2450, B.C., and
 District Lot 2451, B.C., and
 District Lot 2452, B.C.

In the State of British Columbia, Land Surveyors make use
 of the metric system of measurement. The units of measurement
 used in this plan are the metre and the kilometre. The units
 of measurement used in the plan are the foot and the inch.
 The metric survey was completed on the 17th day of October 1980.
 Surveyed by
[Signature]
 S.L.S.
 L.P. Vela.

BLK. F. of
D.L. 2450^S

BLK. E. of
D.L. 2450^S

