

# 3139 BLACKWOOD ST

VICTORIA, BC

Main Floor	780 SQ.FT.
Lower Floor	780 SQ.FT.
<b>Total</b>	<b>1560 SQ.FT.</b>

Deck	313 SQ.FT.
Covered Storage	169 SQ.FT.
Shed	101 SQ.FT.
<b>Total Extras</b>	<b>583 SQ.FT.</b>



Main Floor: 780 Sq.Ft.  
Ceiling Height: 8'-1"



WWW.RICKHUMPHRIES.COM

SUPPLIED BY:

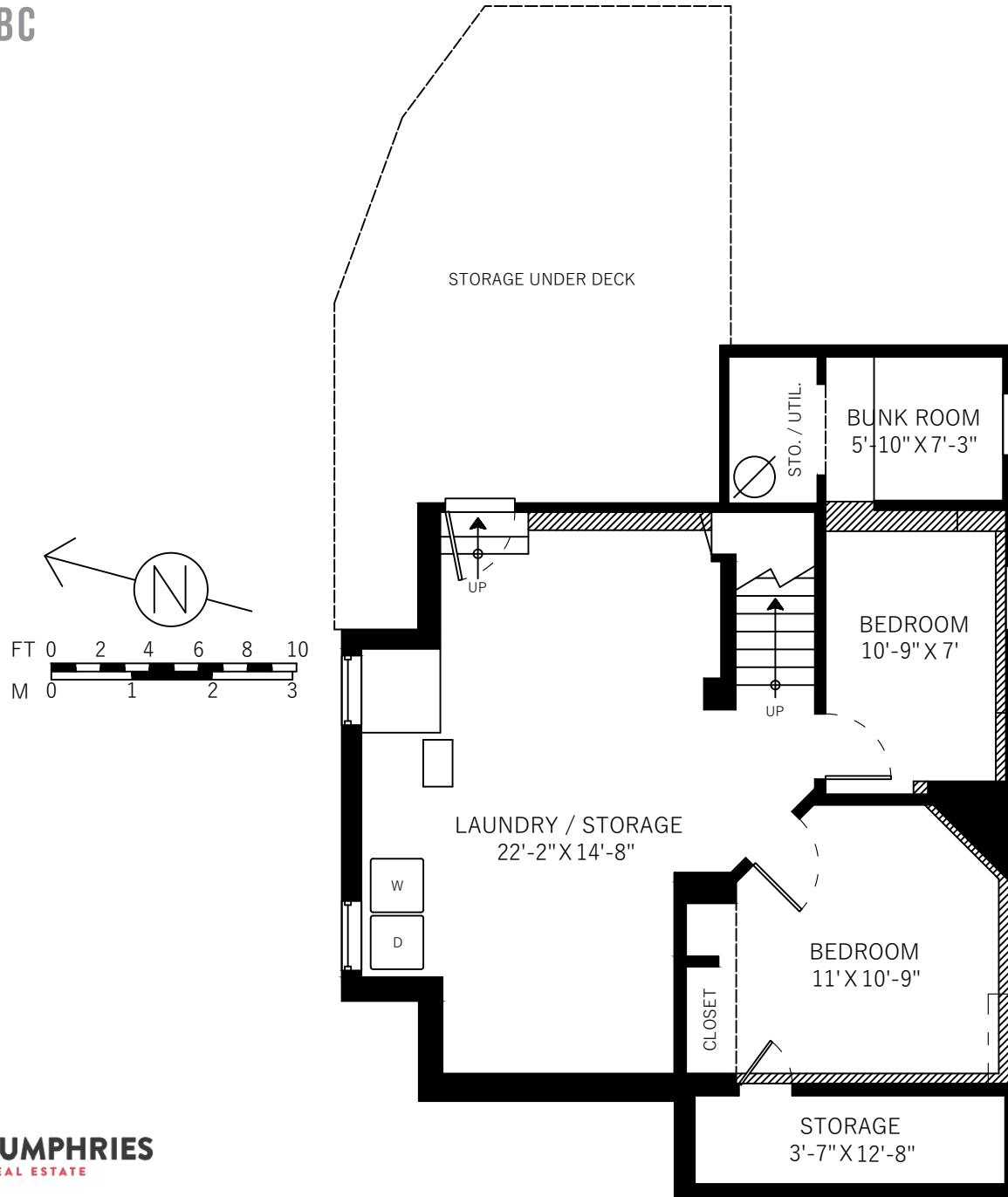


# 3139 BLACKWOOD ST

VICTORIA, BC

Main Floor	780 SQ.FT.
Lower Floor	780 SQ.FT.
<b>Total</b>	<b>1560 SQ.FT.</b>

Deck	313 SQ.FT.
Covered Storage	169 SQ.FT.
Shed	101 SQ.FT.
<b>Total Extras</b>	<b>583 SQ.FT.</b>



Lower Floor: 780 Sq.Ft.  
Ceiling Height: 6'-1"



[WWW.RICKHUMPHRIES.COM](http://www.rickhumphries.com)

SUPPLIED BY:

