

114-1170 Hugh Allan Dr

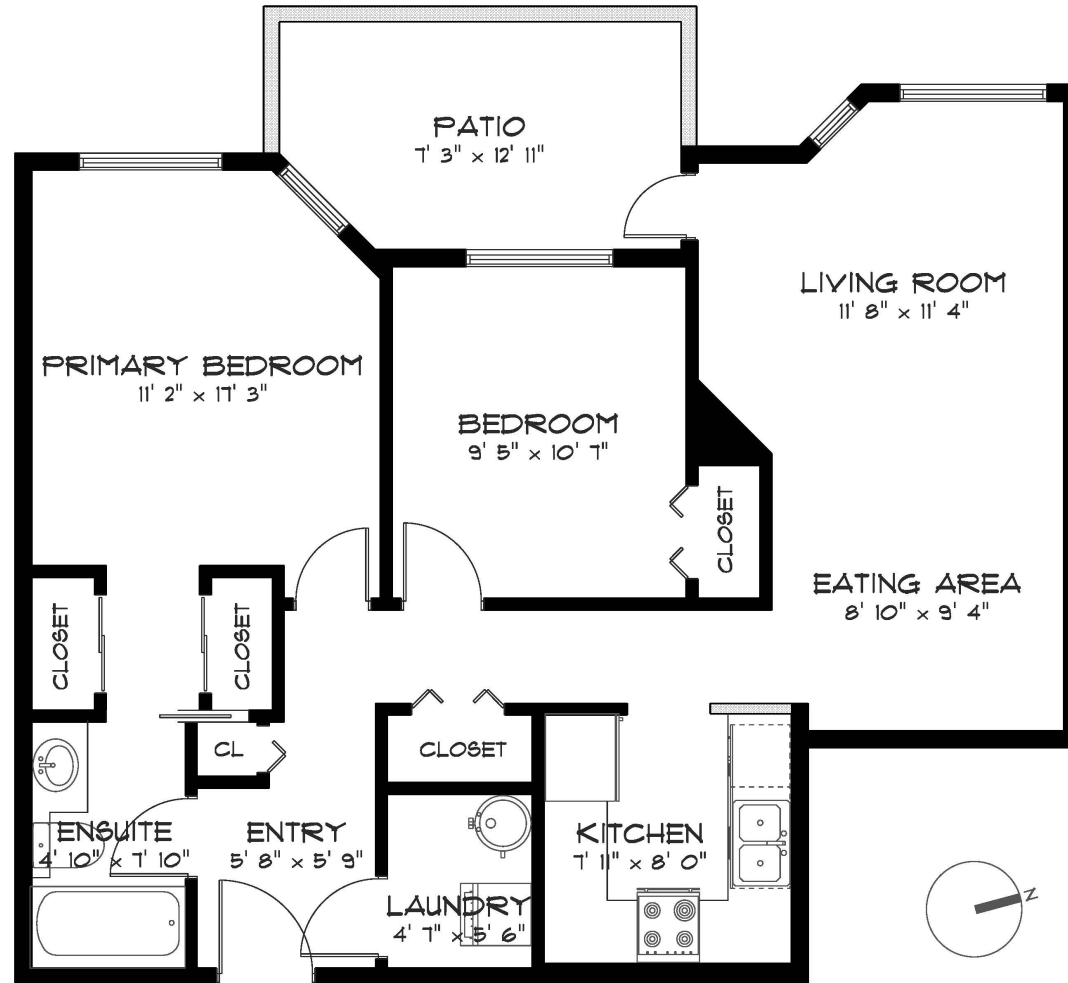
KAMLOOPS, BC

MAIN 760 sq.ft.

TOTAL 760 sq.ft.

PATIO 90 sq.ft.

TOTAL 90 sq.ft.



MAIN FLOOR
SCALE: 1/4" = 1'-0"



ESSENTIAL MEDIA

MEASUREMENTS ARE APPROXIMATE WITHIN +/- 2% AND ARE USED FOR ADVERTISING ONLY. THESE PLANS MAY INCLUDE UNFINISHED AREAS. FLOOR AREAS ARE MEASURED FROM THE INSIDE EDGE OF WALL AS PER THE CITY OF KAMLOOPS DEFINITION OF "TOTAL FLOOR AREA" (ZONING BYLAW NO.55 DIVISION 2.2)