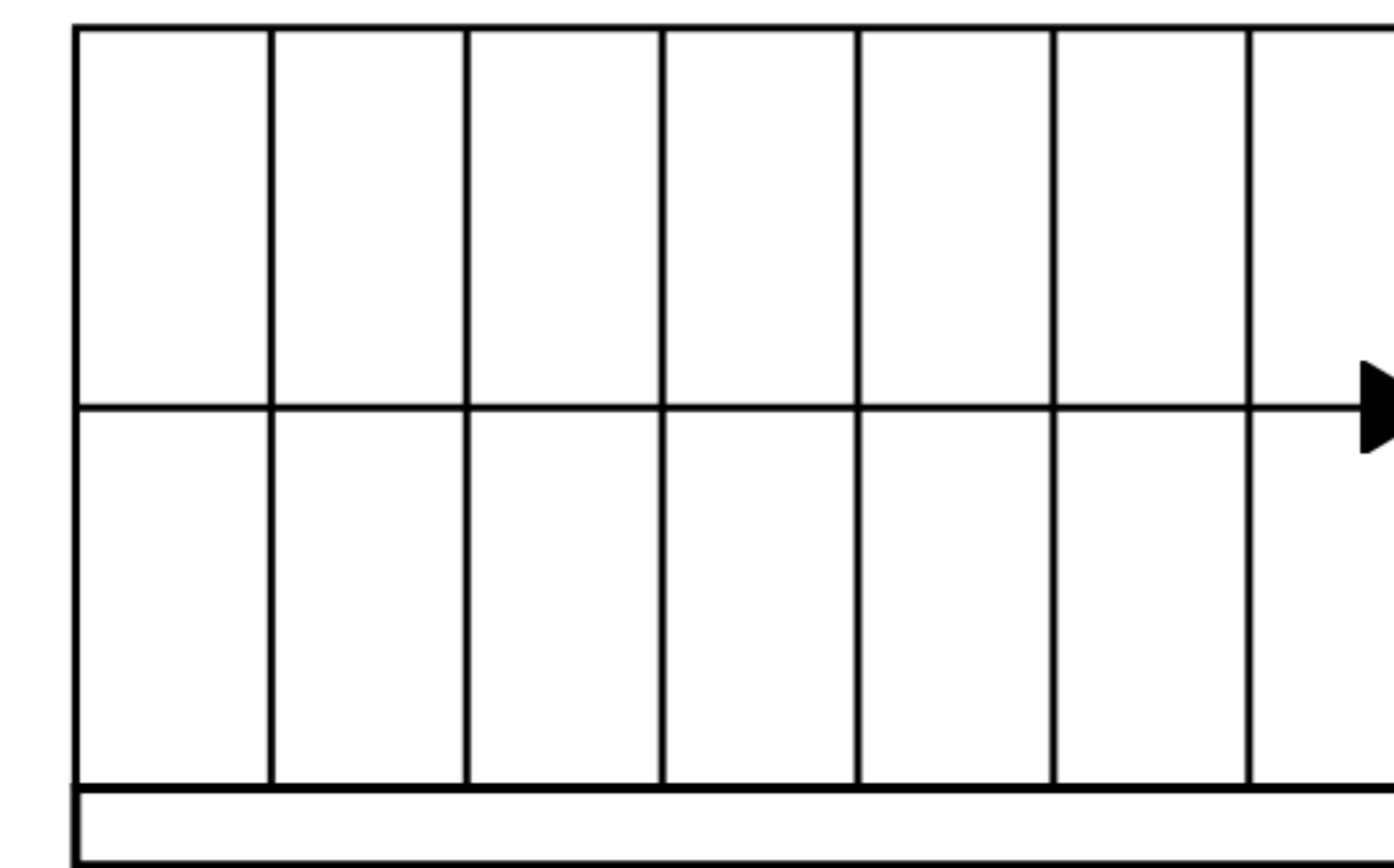
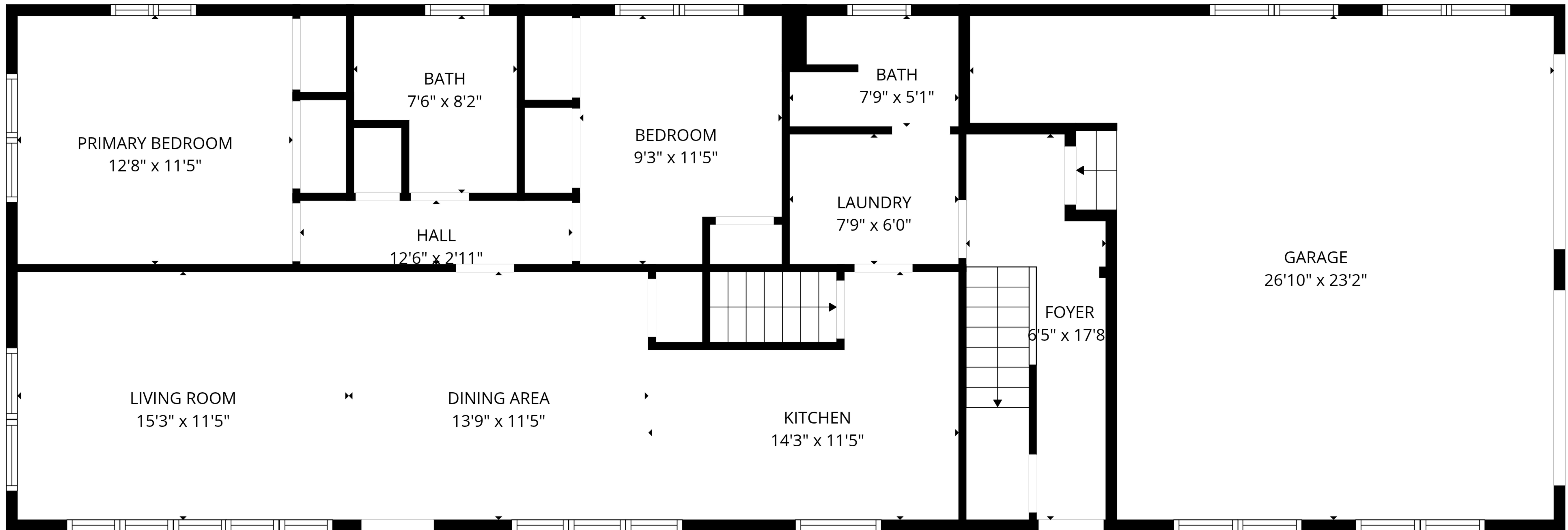


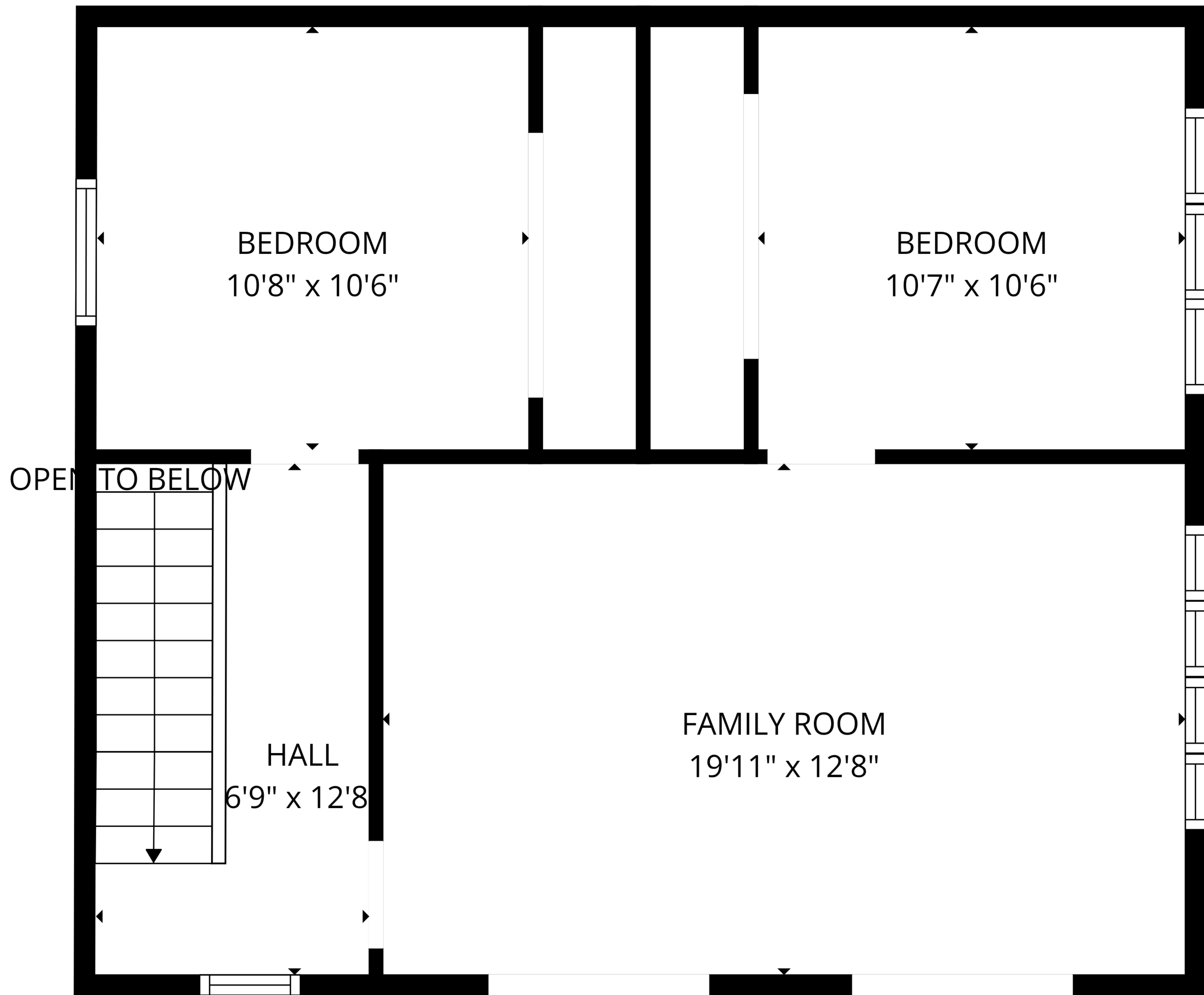
BASEMENT
41'2" x 22'1"



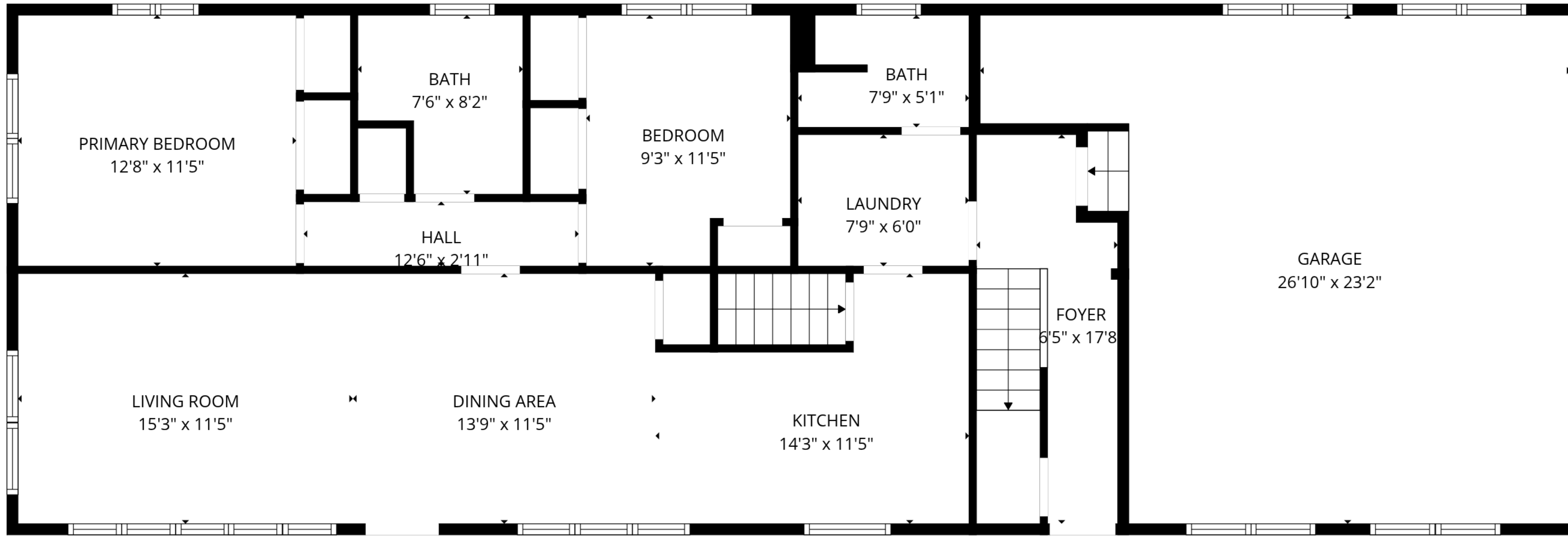
Total GLA: 1868 sq. ft | Total: 3382 sq. ft
Floor 1 - Below grade: (Excluded areas 974 sq. ft)
Floor 2: 1185 sq. ft (Excluded areas 540 sq. ft)
Floor 3: 683 sq. ft (Excluded areas 2 sq. ft)



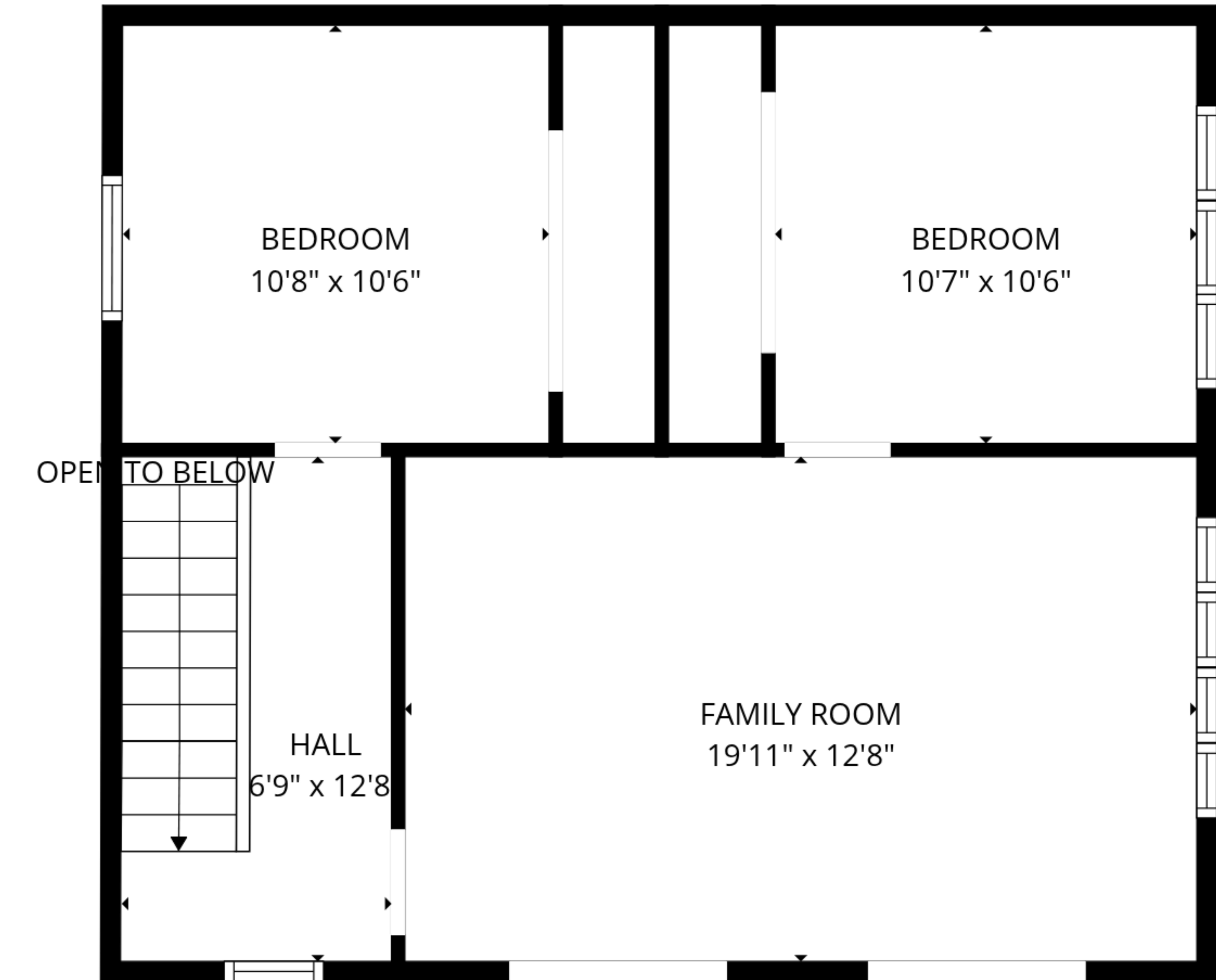
Total GLA: 1868 sq. ft | Total: 3382 sq. ft
 Floor 1 - Below grade: (Excluded areas 974 sq. ft)
 Floor 2: 1185 sq. ft (Excluded areas 540 sq. ft)
 Floor 3: 683 sq. ft (Excluded areas 2 sq. ft)



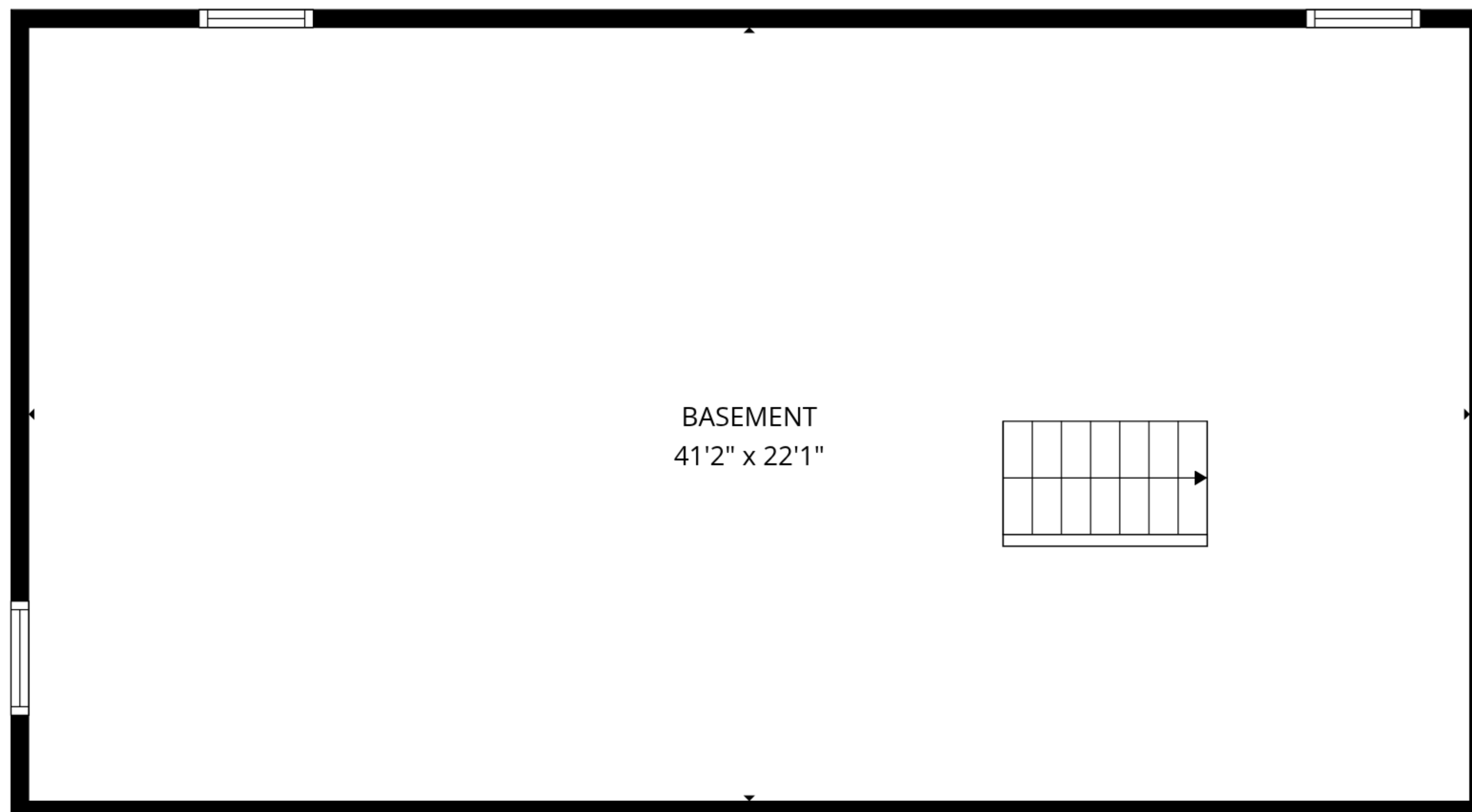
Total GLA: 1868 sq. ft | Total: 3382 sq. ft
Floor 1 - Below grade: (Excluded areas 974 sq. ft)
Floor 2: 1185 sq. ft (Excluded areas 540 sq. ft)
Floor 3: 683 sq. ft (Excluded areas 2 sq. ft)



FLOOR 2



FLOOR 3



FLOOR 1

Total GLA: 1868 sq. ft | Total: 3382 sq. ft
 Floor 1 - Below grade: (Excluded areas 974 sq. ft)
 Floor 2: 1185 sq. ft (Excluded areas 540 sq. ft)
 Floor 3: 683 sq. ft (Excluded areas 2 sq. ft)