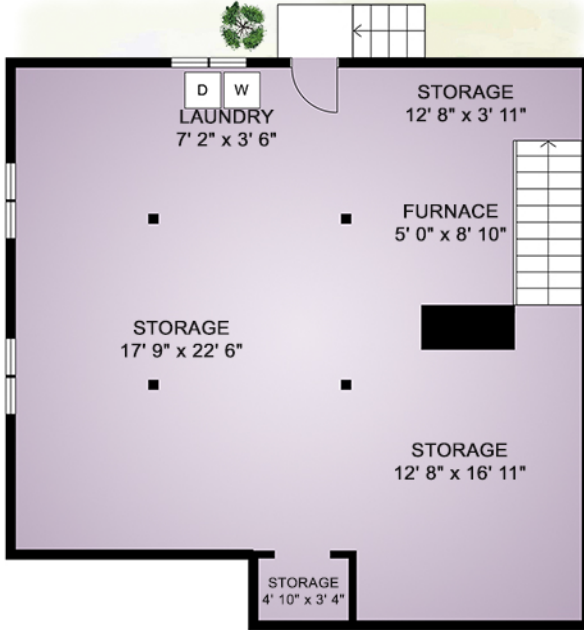


## LOWER FLOOR



### Lower Floor

Unfinished = 920  
(Ceiling Height 7' 0")

### Main Floor

Finished = 920  
(Ceiling Height 8' 0")

Porch = 16  
Deck = 14  
Garage = 230

**Total = 2100**

## MAIN FLOOR



All measurements are approximate and should be verified by the Buyer if important

# 367 Foul Bay Rd

Total Finished Area : 920 Sq Ft

FLOOR PLAN PREPARED  
FOR EXCLUSIVE USE OF  
COLIN GAREAU PREC\*