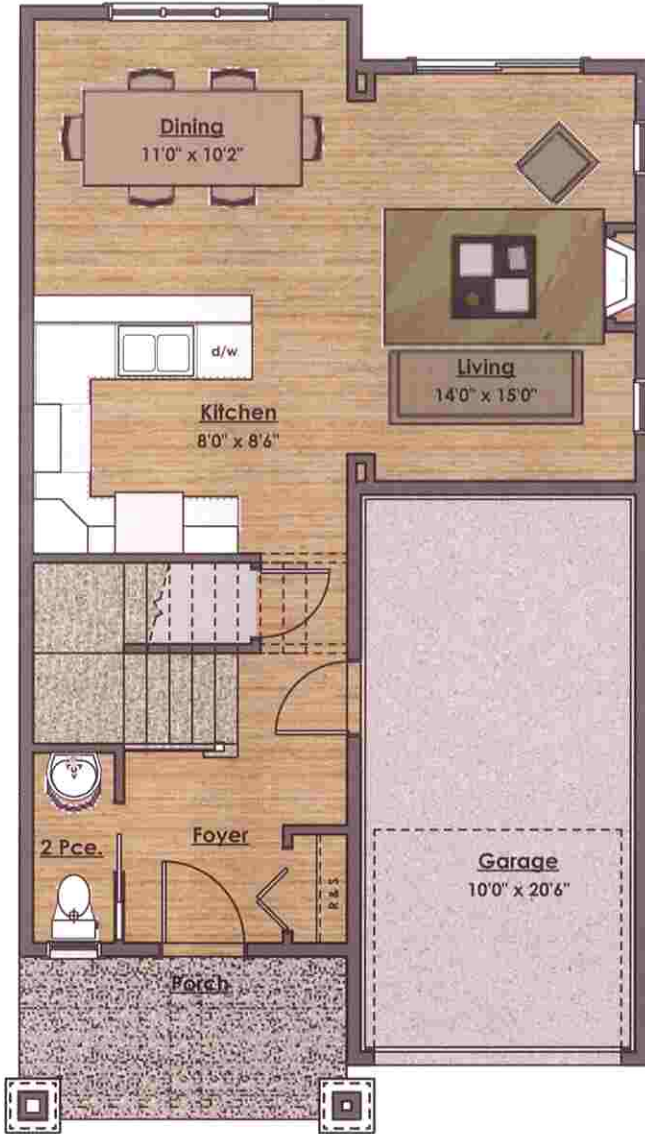
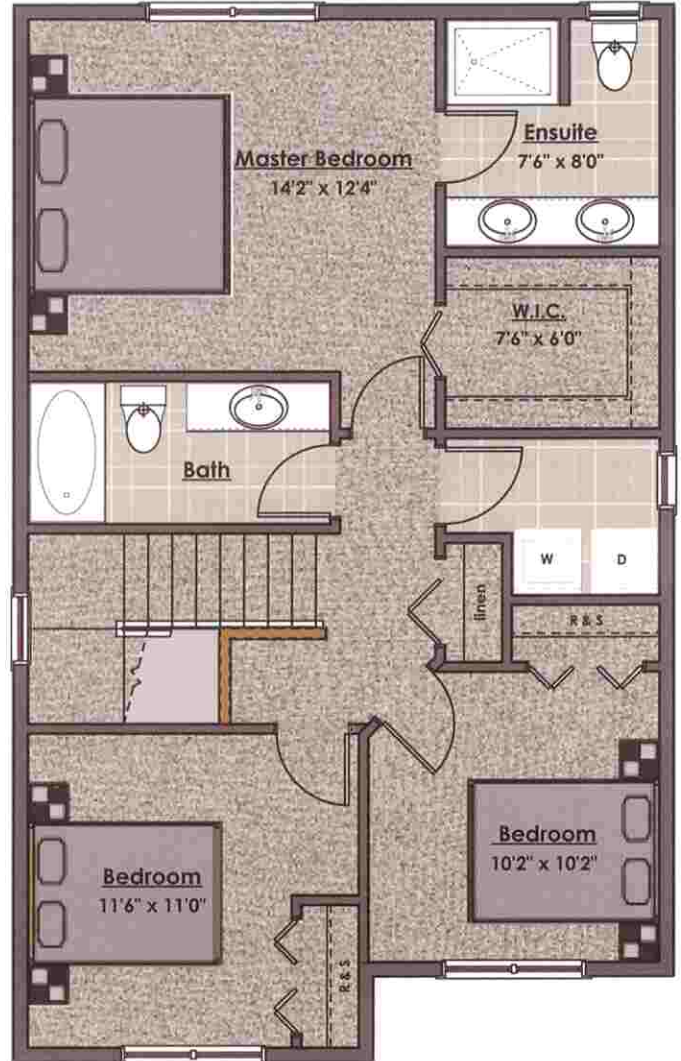


# FLOORPLAN: Portage I

Note: This is a mirror image of the actual floor plan layout. Measurements shown here may vary from the actual room sizes. Buyer should verify, if important.



Main Floor



Upper Floor

## Details: Portage I

Total Living Area.....	1,356 sq. ft.
Main Floor.....	592 sq. ft.
Upper Floor.....	764 sq. ft.
Garage.....	236 sq. ft.

**Disclaimer:** In the interest of maintaining high standards, the developer reserves the right to modify design, plans and specifications without prior notice. Dimensions are approximate and may vary with actual plan and survey.

For more information log on to:  
[WesthillsBC.com](http://WesthillsBC.com)



**Westhills**

Victoria's Most VIBRANT New Community!