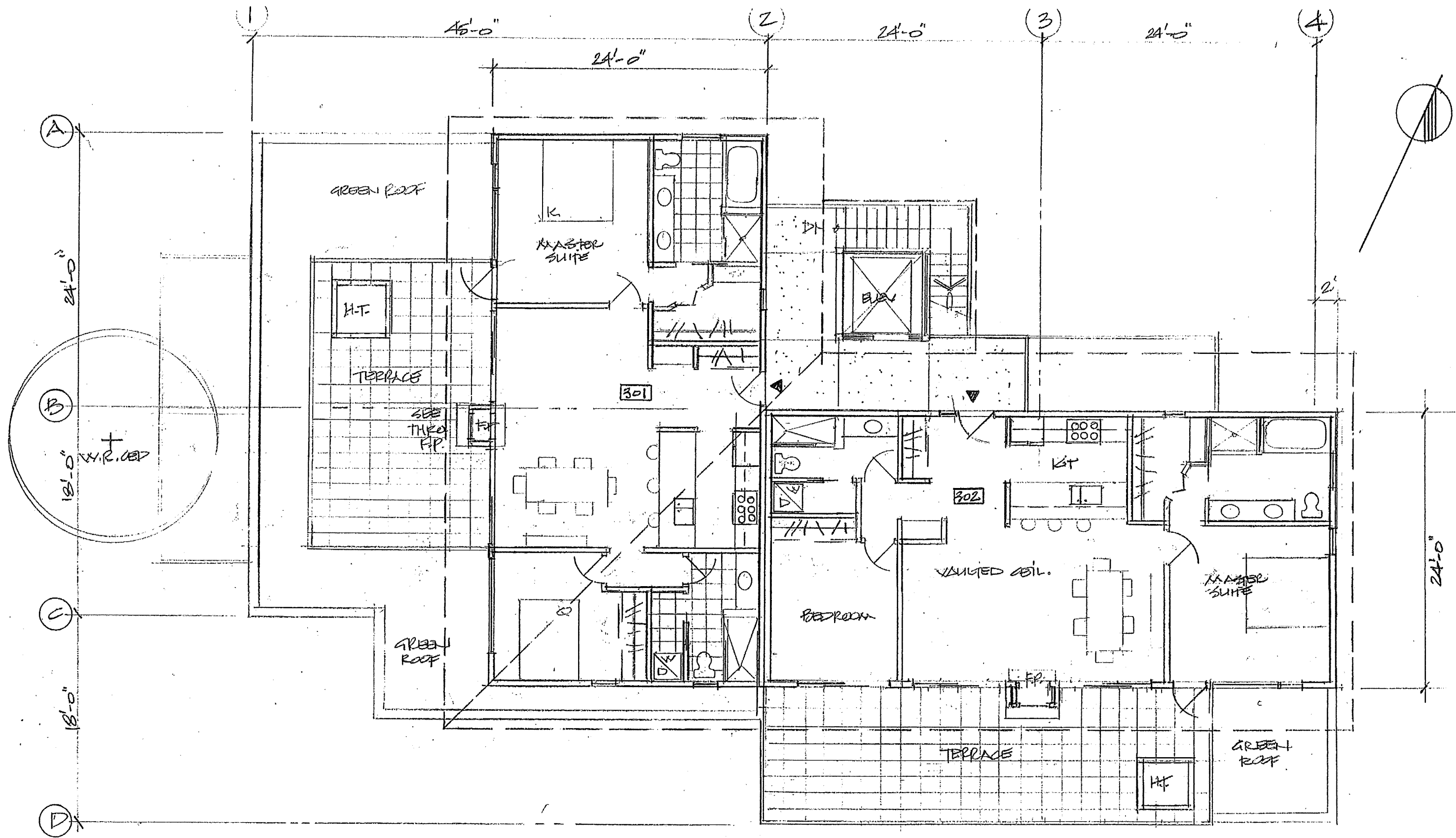


PROPOSED 10 UNIT DEVELOPMENT
 200 CAMPBELL STREET, TOFINO, BC

Leith Anderson Architecture
 1011 Esplanade Ave
 West Vancouver, B.C.
 V7T 1G2

100 LEVEL
 1/8" = 1'-0"

Nov. 8/18
 A01



PROPOSED 10 UNIT DEVELOPMENT
 200 CAMPBELL STREET, TOFINO, BC

Leith Anderson Architecture
 1011 Esplanade Ave
 West Vancouver, B.C.
 V7T 1G2

300 LEVEL
 1/8" = 1'-0"

NOV 2/18

A03