

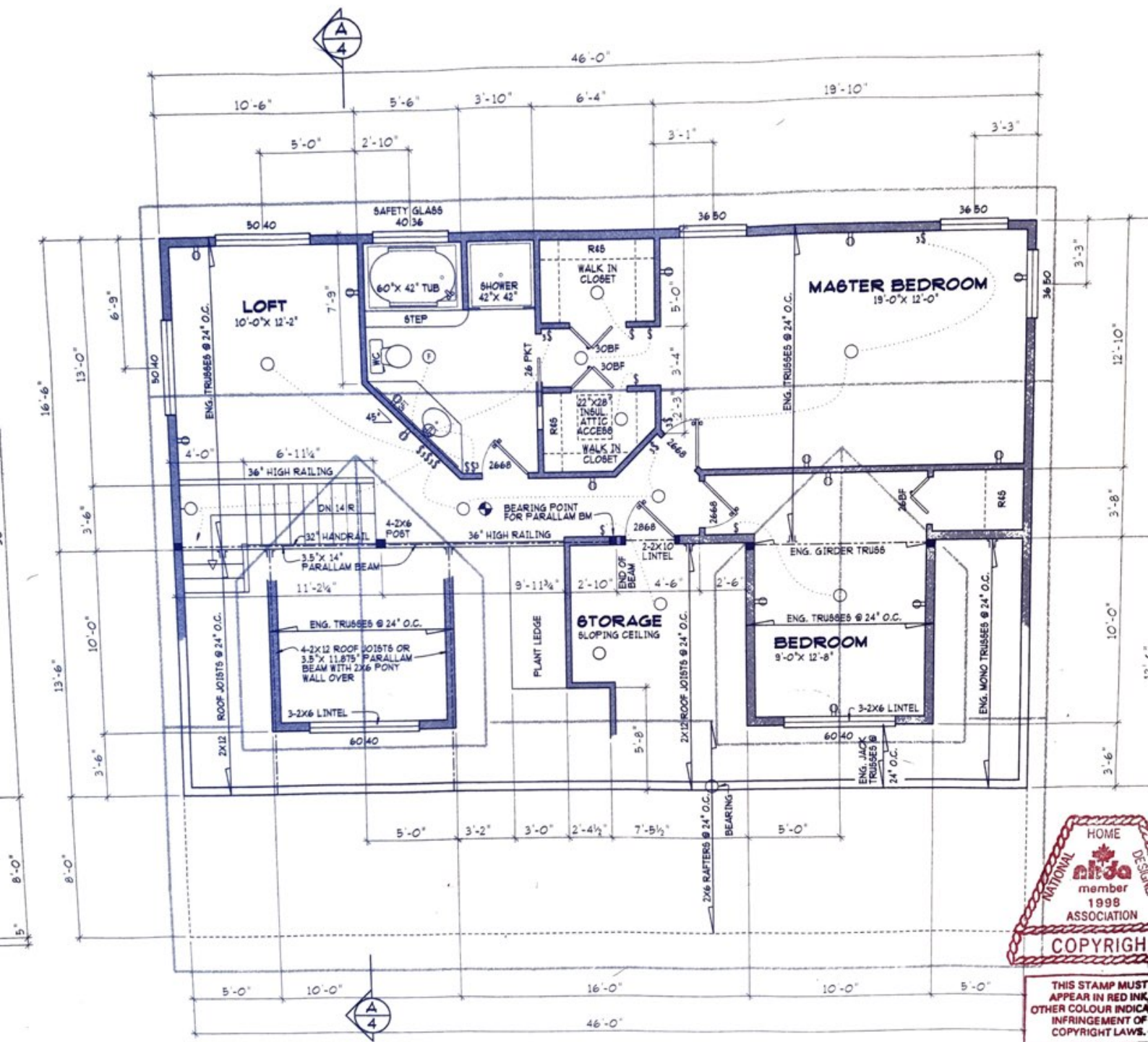
BASEMENT/ FOUNDATION PLAN

720 SQ.FT.

SCALE 1/4" = 1'-0"

NOTES:

- 8'-0.3/4" CEILING HEIGHT UNLESS NOTED OTHERWISE
- 6'-11" WINDOW LINTEL HEIGHT UNLESS NOTED OTHERWISE
- SERIES AND SPACING OF ENGINEERED WOOD JOISTS TO BE SPECIFIED BY MANUFACTURER
- FORCED AIR HEATING AND CENTRAL AIR CONDITIONING
- CENTRAL VACUUM SYSTEM



UPPER FLOOR PLAN

820 SQ.FT.

SCALE 1/4" = 1'-0"

TOTAL FLOOR AREA - 1540 SQ.FT.



THIS STAMP MUST APPEAR IN RED INK. OTHER COLOUR INDICATES INFRINGEMENT OF COPYRIGHT LAWS.

SYMBOL LEGEND

⊡ LIGHT SWITCH	⊡ SPECIAL OUTLET (220V)	○ WALL LIGHT	⊡ HOSE BIB
⊡ 3-WAY LIGHT SWITCH	⊡ APPLIANCE OUTLET	□ RECESSED CEILING LIGHT	⊡ INDICATES POINT LOAD FROM ABOVE
⊡ 4-WAY LIGHT SWITCH	⊡ SWITCHED OUTLET	⊡ RECESSED DIRECTIONAL CEILING LIGHT	JL BEAM JOIST OR TRUSS HANGER AS REQUIRED
⊡ LIGHT SWITCH WITH DIMMER	⊡ GROUND FAULT INTERRUPT CIRCUIT	⊡ VAPOUR PROOF LIGHT	■ BUILT UP 2X4 OR 2X6 COLUMN. NUMBER OF STUDS AT LEAST EQUAL TO WIDTH OF STRUCTURAL MEMBER BEING SUPPORTED
⊡ WALL OUTLET	⊡ WEATHER PROOF OUTLET	⊡ FLOURESCENT LIGHT	
⊡ SINGLE WALL OUTLET	⊡ HEIGHT OF OUTLET ABOVE FLOOR	⊡ EXHAUST FAN	
⊡ FLOOR OUTLET	⊡ CEILING LIGHT		

THIS PLAN IS THE EXCLUSIVE PROPERTY OF HOME DESIGN AND MAY NOT BE USED OR REPRODUCED WITHOUT THE WRITTEN PERMISSION OF BERGMAN HOME DESIGN