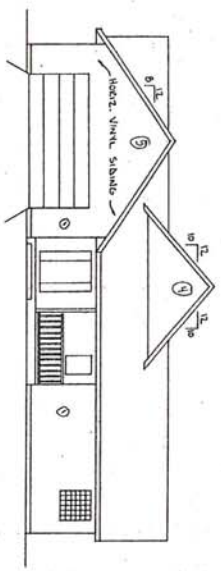
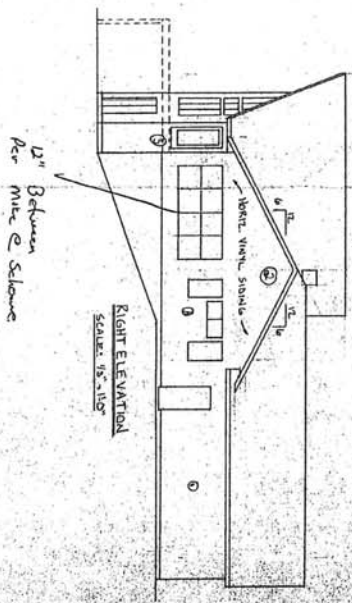


LEFT ELEVATION
SCALE: 1/8" = 1'-0"

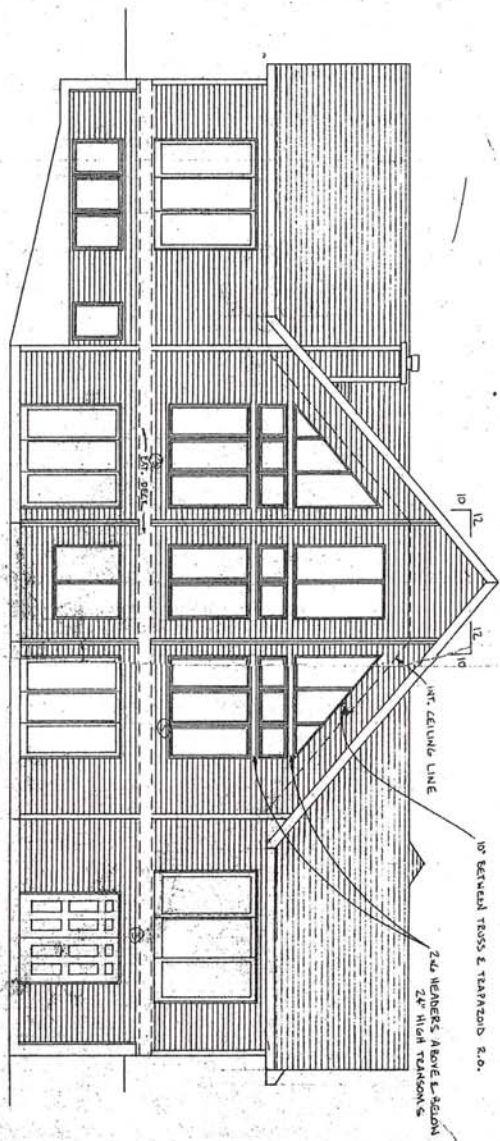


REAR ELEVATION (back side)
SCALE: 1/8" = 1'-0"



RIGHT ELEVATION
SCALE: 1/8" = 1'-0"

12" Between
Roof
Sill & Sill

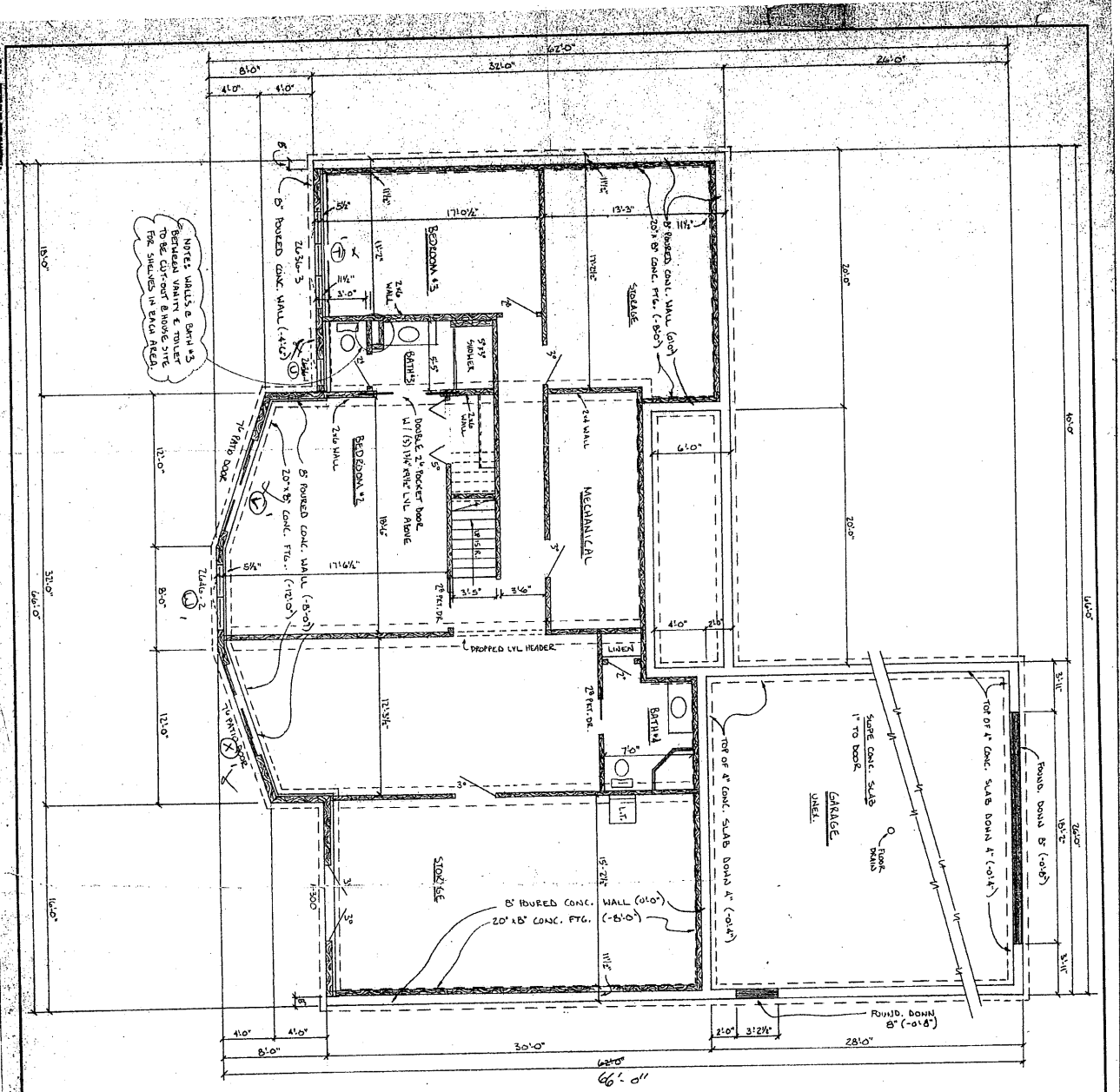


FRONT ELEVATION
SCALE: 1/8" = 1'-0"

Door Size
60" x 80"

HALL RES. PROJECT NO. 12-01-07 DATE: 11-18-07		12/20/11
FOR: SCHOLAR HOUSE		12/20/11
REVISIONS:		12/20/11
REVISED 4-5-03	133714	12/20/11
REVISED 8-17-03	133714	12/20/11
REVISED 12-5-07	133714	12/20/11

HALL

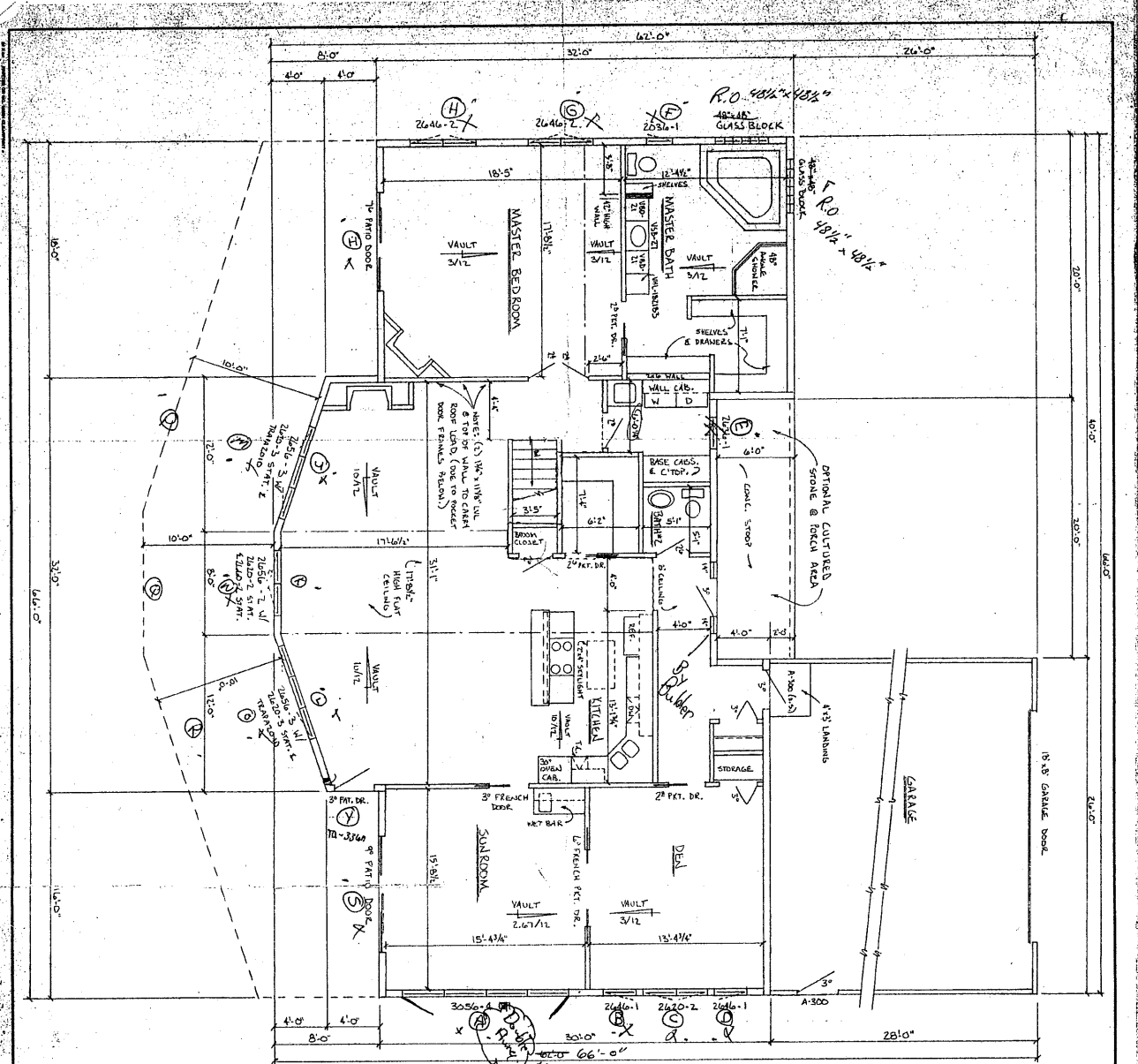


NOTES: WALLS & PARTS BETWEEN VAIN & TOWER TO BE CUT-OFF & BLOWN SITE FOR SHAKES IN EXIST. REED.

ONE STAIR SO AT 10818

MILL RES.	
DATE	1/1/82
BY	PAUL SLODOWSKI
REVISIONS	
1	REVISED 4-2-82
2	REVISED 4-13-82
3	REVISED 6-11-82
4	REVISED 10-20-82

66'-0"



S-234 X 824
 66 1/4 x 82 1/4
 Date 8/10

NO. 8 COST
 1000

HALL REV.	
DATE	BY
REVISED 4-8-03	REVISED 4-8-03
REVISED 5-17-03	REVISED 5-17-03
REVISED 11-5-03	REVISED 11-5-03
REVISED 11-20-03	REVISED 11-20-03

REVISIONS