



**MAIN FLOOR**  
**1393 SQ. FT.**  
**8'-0" CEILING HEIGHT**

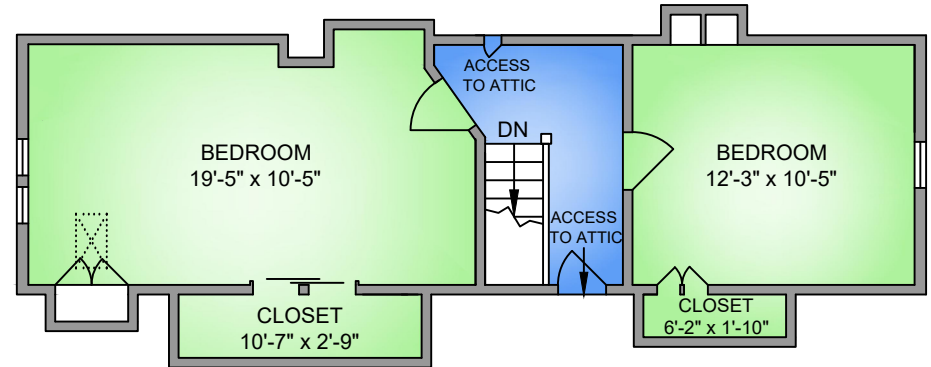
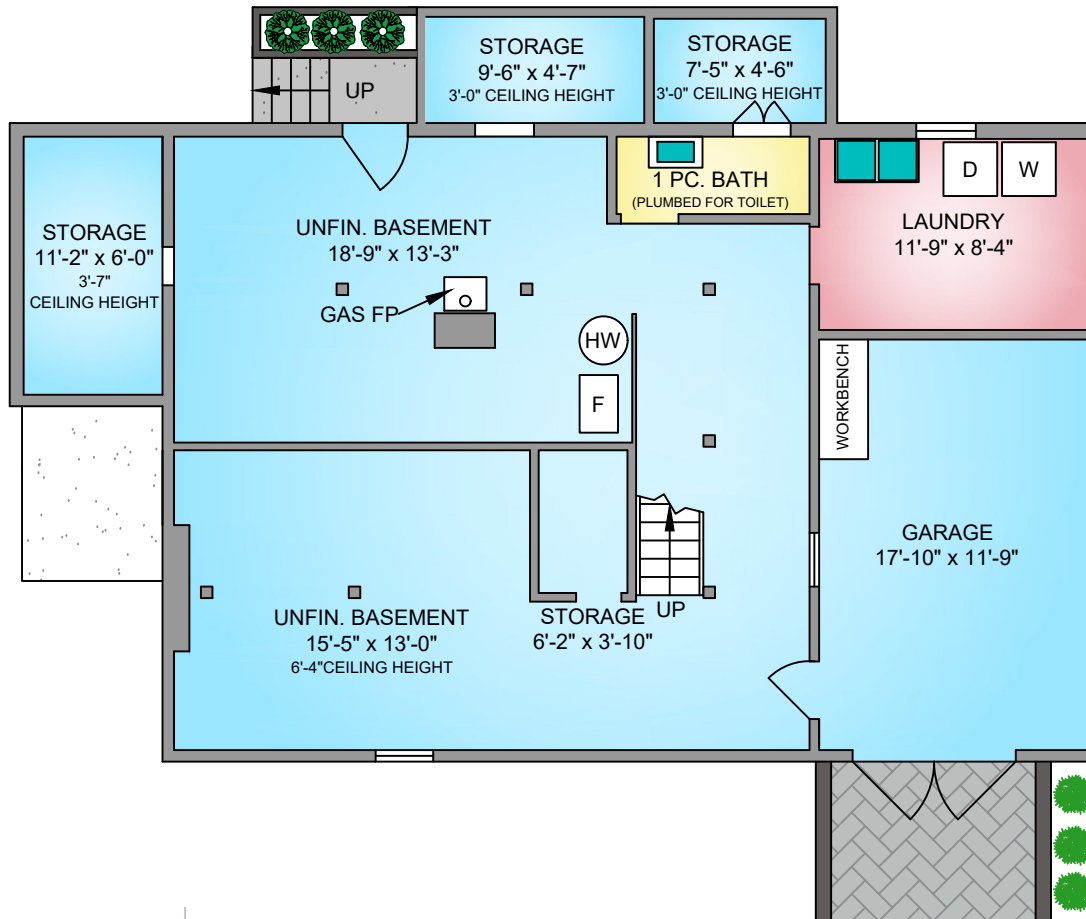
**NORTH**



0' 5' 10'  
**SCALE**

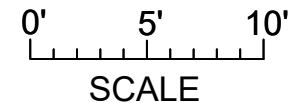
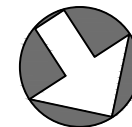
2529 BOWKER AVENUE JULY 7, 2021				
PREPARED FOR THE EXCLUSIVE USE OF PROPERTIES IN VICTORIA PROFESSIONALS PLANS MAY NOT BE 100% ACCURATE, IF CRITICAL BUYER TO VERIFY.				
FLOOR	AREA (SQ. FT.)			
	FINISHED	UNFINISHED	GARAGE	DECK / PATIO
LOWER	-	1072	230	-
MAIN	1393	-	-	890
UPPER	509	-	-	-
TOTAL	1902	1072	230	890

**LOWER FLOOR**  
**1072 SQ. FT.**  
6'-5" CEILING HEIGHT



**UPPER FLOOR**  
**509 SQ. FT.**  
7'-1" VAULTED CEILING

**NORTH**



2529 BOWKER AVENUE JULY 7, 2021				
PREPARED FOR THE EXCLUSIVE USE OF PROPERTIES IN VICTORIA PROFESSIONALS PLANS MAY NOT BE 100% ACCURATE, IF CRITICAL BUYER TO VERIFY.				
FLOOR	AREA (SQ. FT.)			
	FINISHED	UNFINISHED	GARAGE	DECK / PATIO
LOWER	-	1072	230	-
MAIN	1393	-	-	890
UPPER	509	-	-	-
<b>TOTAL</b>	<b>1902</b>	<b>1072</b>	<b>230</b>	<b>890</b>