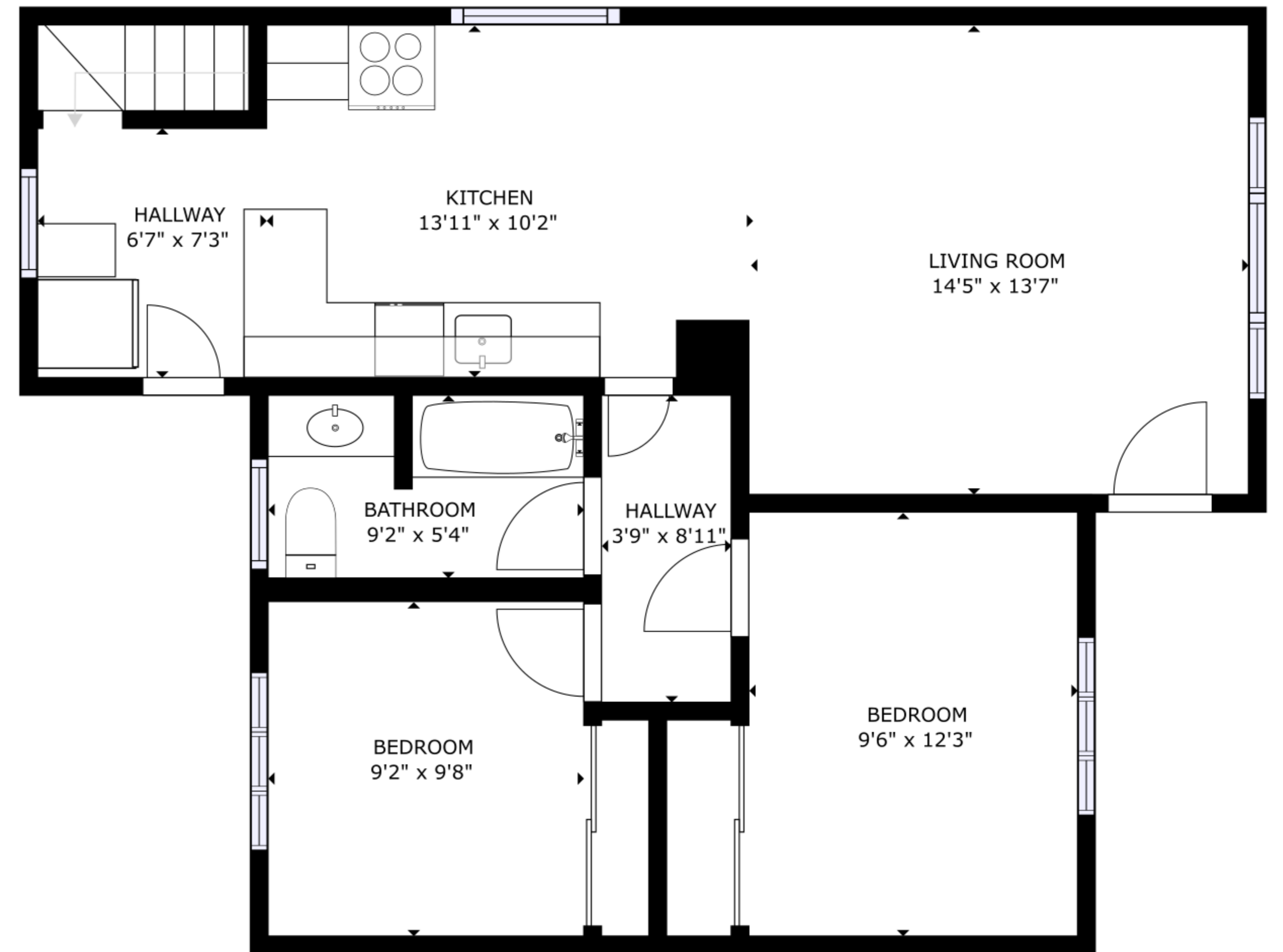


FLOOR 1



FLOOR 2

5464 Maple Ave, Powell River, BC

GROSS INTERNAL AREA
 FLOOR 1: 783 sq ft, FLOOR 2: 750 sq ft
 TOTAL: 1533 sq ft

SIZES AND DIMENSIONS ARE APPROXIMATE, ACTUAL MAY VARY.