

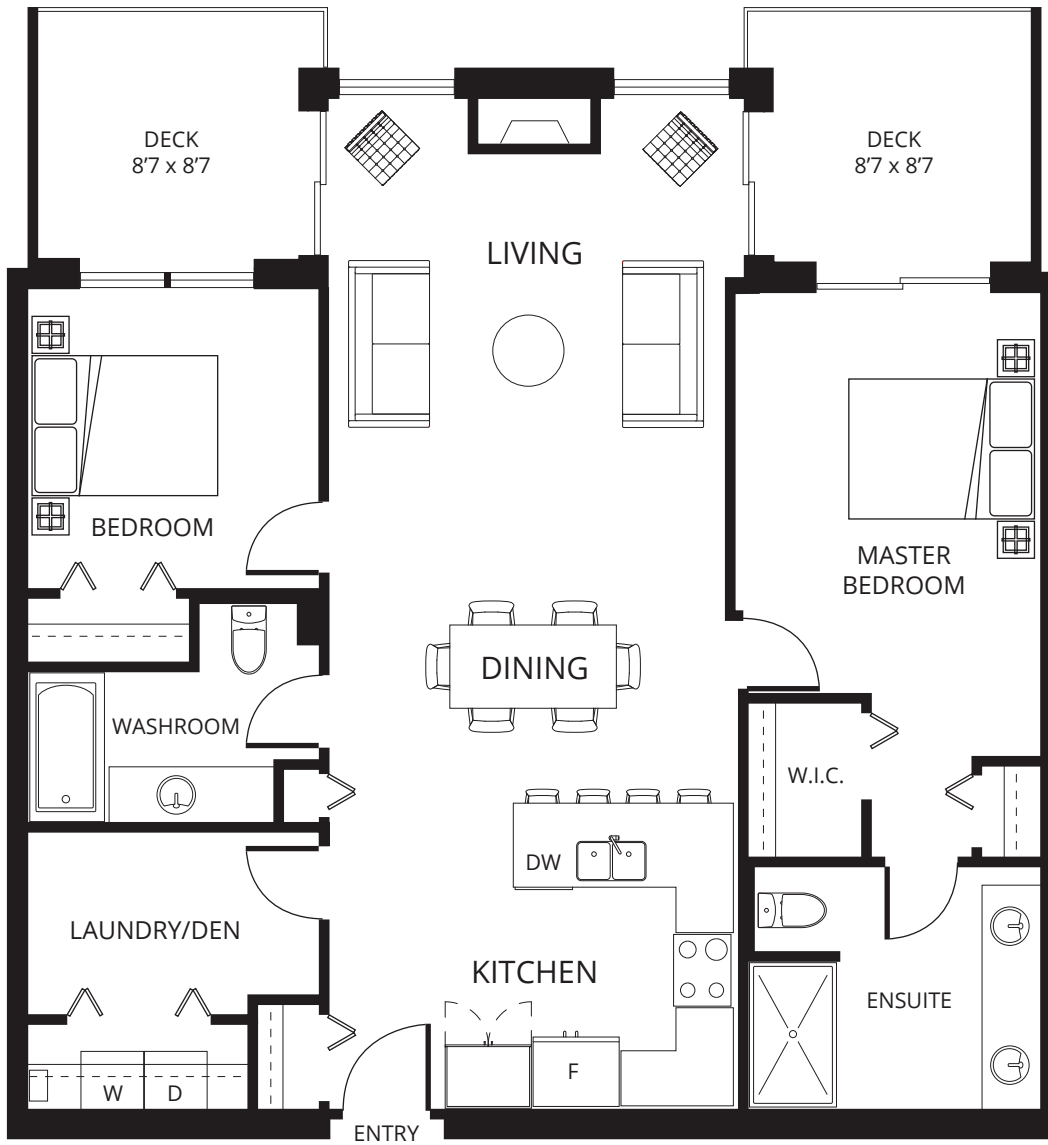
Skaha Lake Towers Phase 3

skahalaketowers.ca

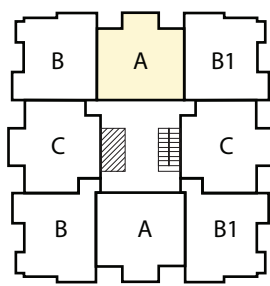
Plan A

1,183 sq.ft. 2 bedroom

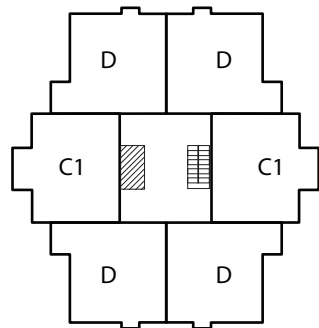
UNITS: 308 - 1008



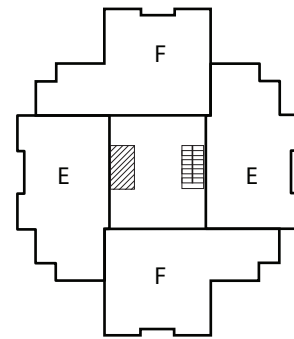
Living:	13'10 x 11'
Dining:	13'10 x 12'
Kitchen:	9'8 x 7'8
Master:	10'5 x 13'11
Bedroom:	10' x 10'2



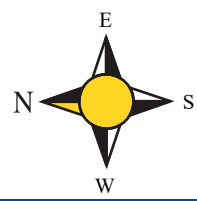
3rd to 10th Floor



11th and 12th Floor



13th and 14th Floor



Philip*, Diane*, Stephen* Fox
*Personal Real Estate Corporation

RE/MAX Penticton Realty
foxandfox@pentictonproperties.com

Toll Free: 1-800-652-6246
Phone: 250-492-2266

copyright 2022 Skaha Lake Towers

The developer reserves the right to make modifications and changes to plans, specifications and prices without notice. E.O.&E. Square Footage is approximate.

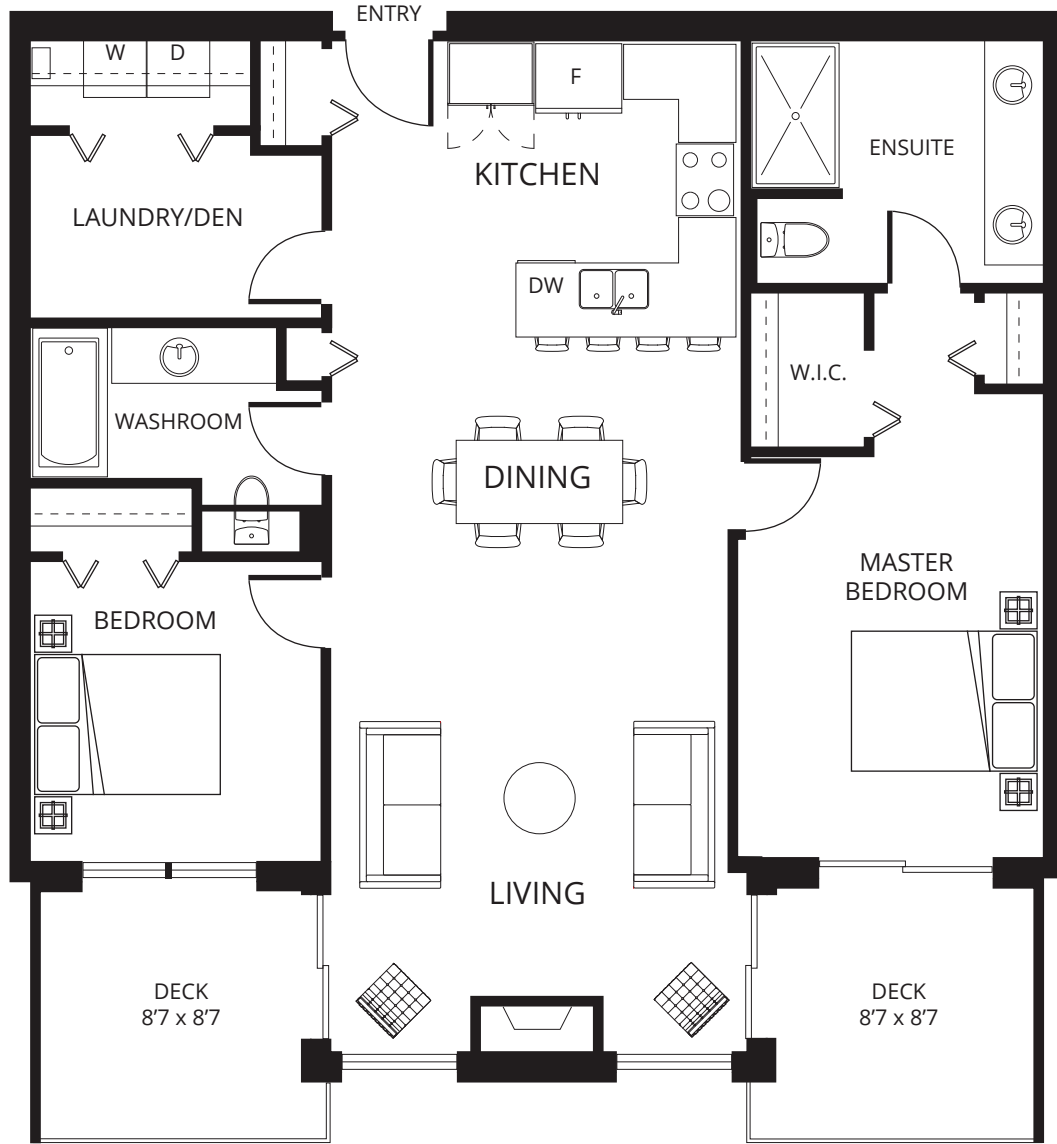
Skaha Lake Towers Phase 3

skahalaketowers.ca

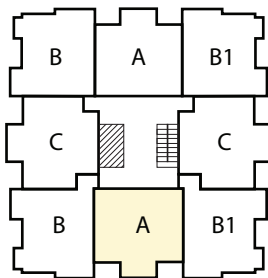
Plan A

1,183 sq.ft. 2 bedroom

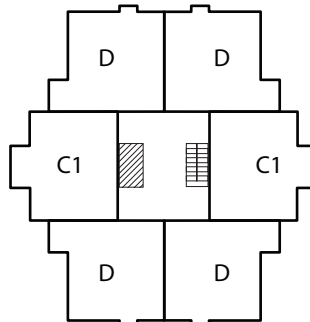
UNITS: 304 - 1004



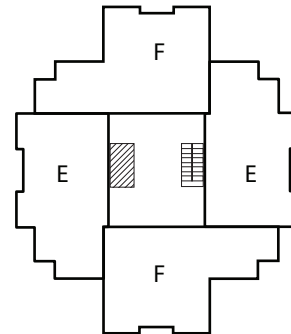
Living:	13'10 x 11'
Dining:	13'10 x 12'
Kitchen:	9'8 x 7'8
Master:	10'5 x 13'11
Bedroom:	10' x 10'2



3rd to 10th Floor



11th and 12th Floor



13th and 14th Floor



Philip*, Diane*, Stephen* Fox
*Personal Real Estate Corporation

RE/MAX Penticton Realty
foxandfox@pentictonproperties.com

Toll Free: 1-800-652-6246
Phone: 250-492-2266

copyright 2022 Skaha Lake Towers

The developer reserves the right to make modifications and changes to plans, specifications and prices without notice. E.O.&E. Square Footage is approximate.