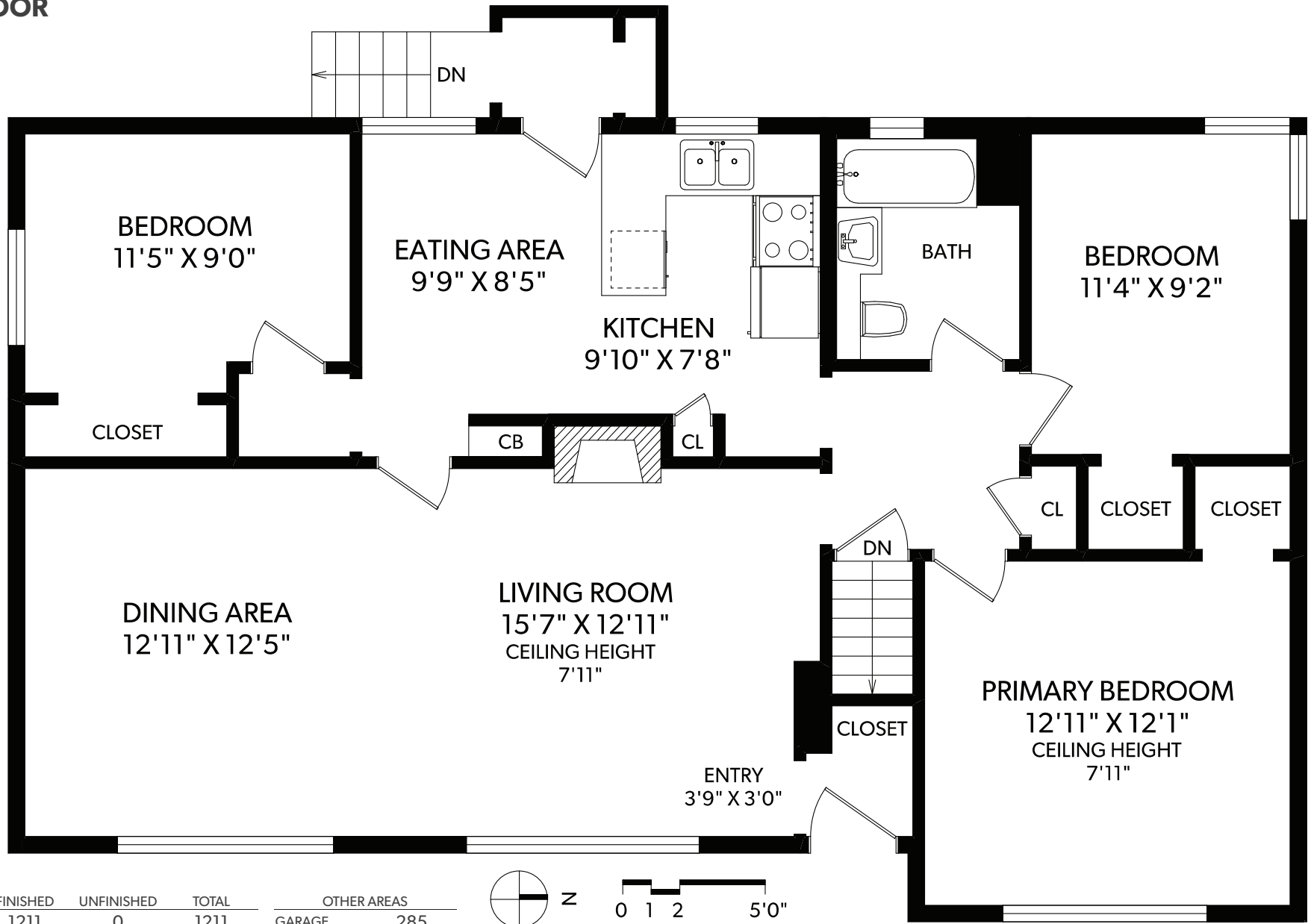
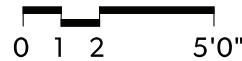
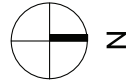


**MAIN FLOOR**



FLOOR	FINISHED	UNFINISHED	TOTAL
MAIN	1211	0	1211
LOWER	1211	0	1211
<b>TOTAL</b>	<b>2422</b>	<b>0</b>	<b>2422</b>

OTHER AREAS	
GARAGE	285



**4240 SHELBOURNE STREET**

DOCUMENT PREPARED FOR THE EXCLUSIVE USE OF

**RICK HUMPHRIES<sup>PREC\*</sup> & MARTIN HUMPHRIES**

**VICTORIA REAL ESTATE**



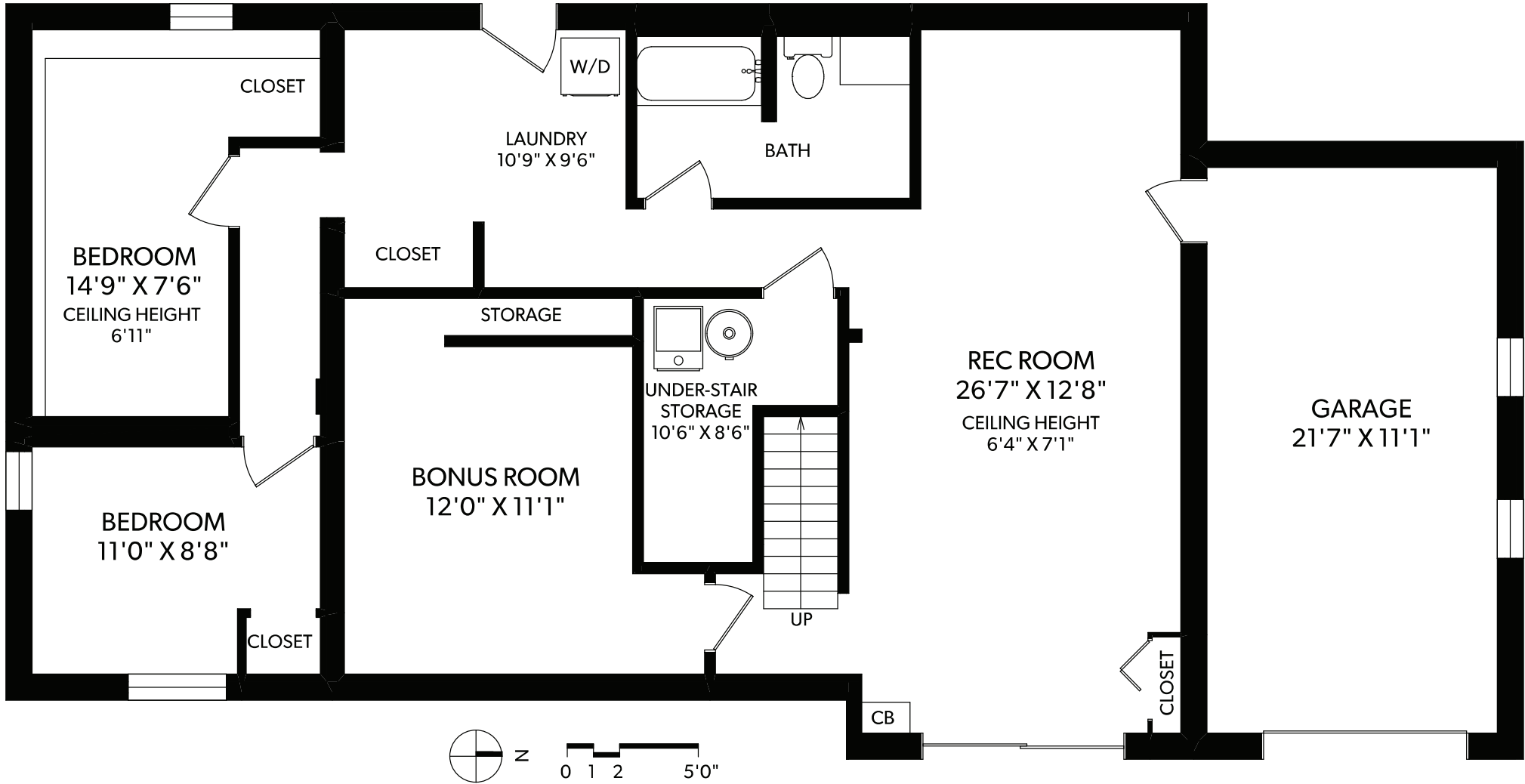
**ROYAL LEPAGE**  
Coast Capital Realty  
INDEPENDENTLY OWNED AND OPERATED

MEASURED 04/08/2020 BY COLTEN MOCHIZUKI

250-388-6998  
ORDERS@REALFOTO.CA

All information furnished regarding this property is from sources deemed reliable but no warranty or representation is made to the accuracy thereof. Purchaser to verify measurements if important.

# LOWER FLOOR



FLOOR	FINISHED	UNFINISHED	TOTAL	OTHER AREAS
MAIN	1211	0	1211	GARAGE 285
LOWER	1211	0	1211	
TOTAL	2422	0	2422	



## 4240 SHELBOURNE STREET

DOCUMENT PREPARED FOR THE EXCLUSIVE USE OF

# RICK HUMPHRIES<sup>PREC\*</sup> & MARTIN HUMPHRIES

VICTORIA REAL ESTATE

250-388-6998  
ORDERS@REALFOTO.CA



**ROYAL LEPAGE**  
Coast Capital Realty  
INDEPENDENTLY OWNED AND OPERATED

MEASURED 04/08/2020 BY COLTEN MOCHIZUKI