

**LOT INFORMATION**

LOT 2 PHASE 2, 2094 LINFIELD DRIVE  
KAMLOOPS, BC

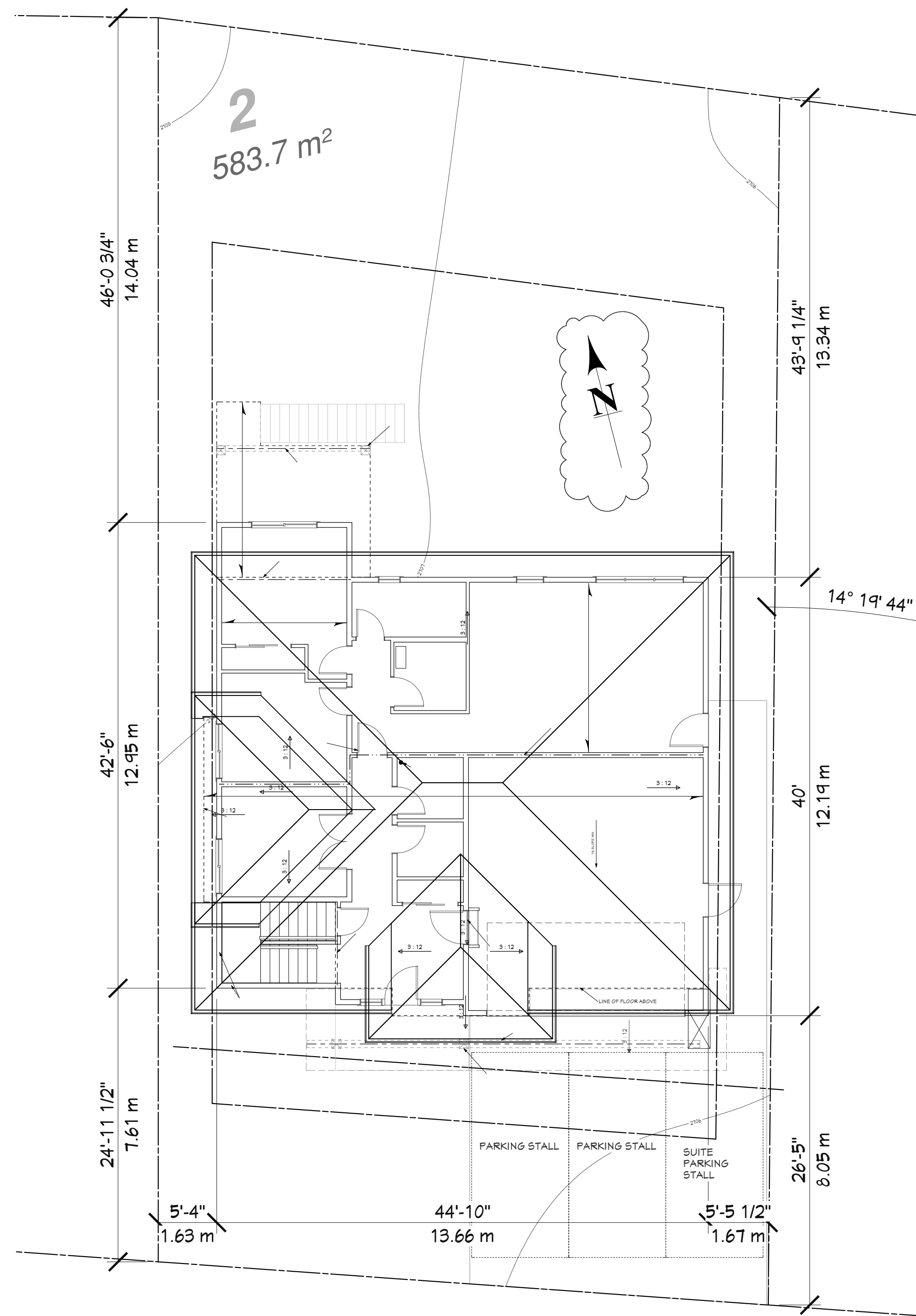
LOT SIZE : 583.7 M2  
FOOTPRINT : 190.26 M2 : 2048 SQFT  
COVERAGE : 32.59%

**SETBACK INFO**

FRONT = 6M GARAGE, 4.5M HOUSE  
REAR = 6M  
SIDE = 1.5M

**HOUSE CHARACTERISTICS (INC. STAIRS)**

GARAGE : 510 SQFT  
LOWER FLOOR : 1302 SQFT  
(SUITE : 826 SQFT 1BED SUITE)  
UPPER FLOOR : 1750 SQFT  
DECK : 186 SQFT  
  
TOTAL : 3052 SQFT

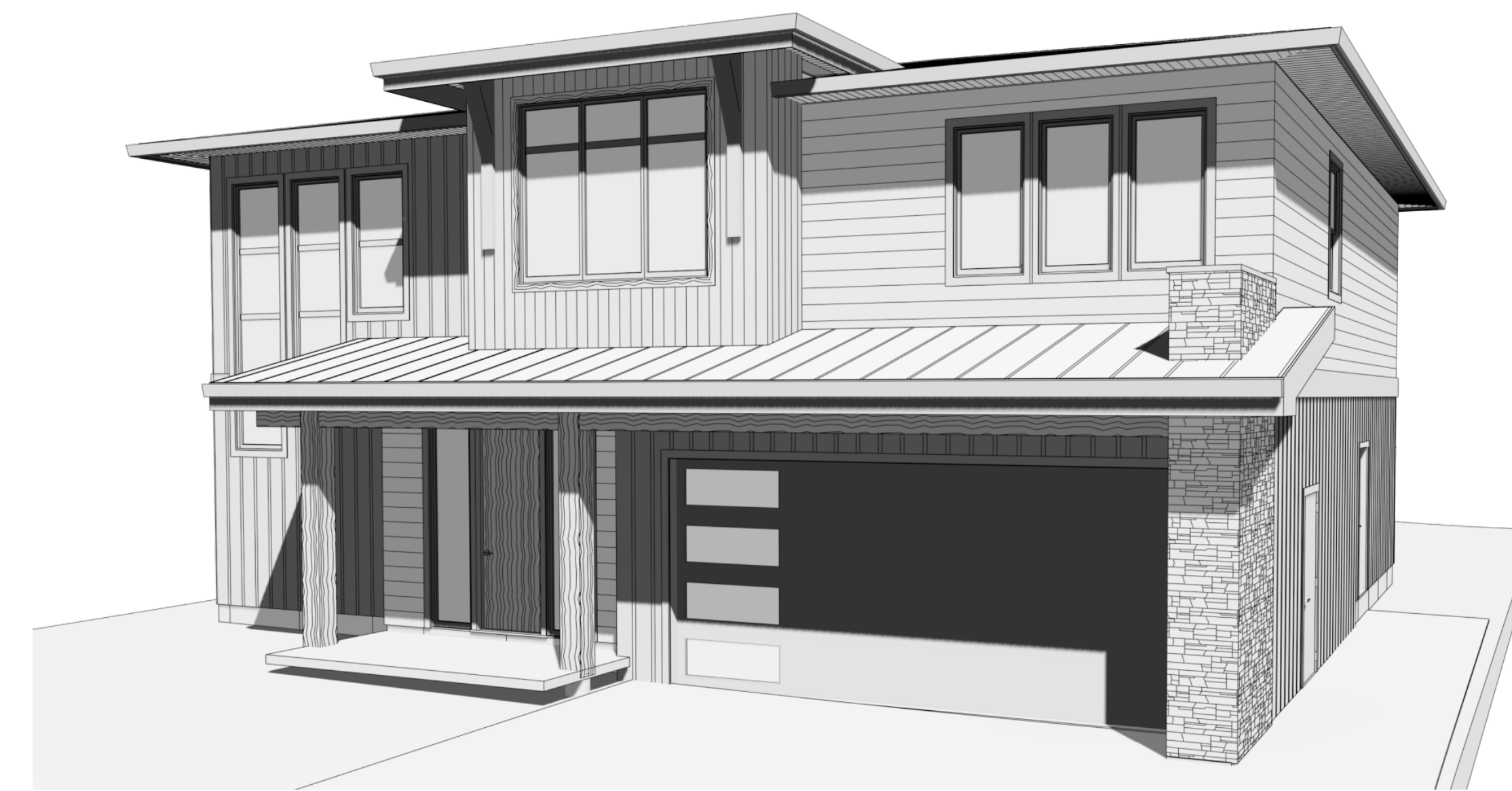


**PLOT PLAN**  
SCALE: 1/8" = 1' - 0"

PROPERTY LINES ARE FOR REFERENCE ONLY  
AND SHOULD BE LAID OUT BY A SURVEYOR



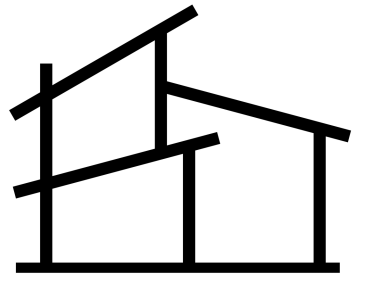
Camera 2



Camera 3



Camera 4



**BULMAN  
DESIGNS  
LTD.**

250-682-0393  
BULMANDESIGNS.COM  
SEANBULMAN@LIVE.CA  
KAMLOOPS, B.C.

**LOT 2 PHASE 2  
2094 LINFIELD DRIVE  
ABERDEEN HIGHLANDS**

DRAWN BY  
SB

ALL WINDOW & DOOR SIZES  
ARE INCH INCH  
3048 = 30" X 48"

ISSUED FOR:

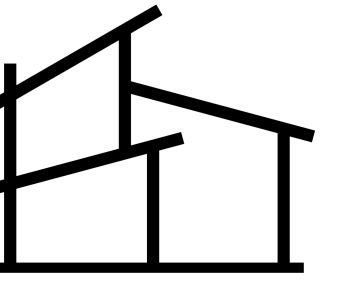
- APR 4 23 CONCEPT LAYOUTS
- APR 6 23 CONCEPT LAYOUTS v2
- APR 12 23 FLIPPED
- APR 12 23 FOR REVIEW
- APR 26 23 NOTE ARROW

**3D VIEWS & PLOT PLAN**

- P-1 3D VIEWS & PLOT PLAN
- P-2 LOWER & MAIN FLOOR
- P-3 ELEVATIONS
- P-4 LEFT & RIGHT ELEVATIONS
- P-5 SECTIONS 1,2,4

DATE:  
Wednesday, April 26, 2023

SCALE: 1/4" = 1'-0"



**BULMAN  
DESIGNS  
LTD.**

250-682-0393  
BULMANDESIGNS.COM  
SEANBULMAN@LIVE.CA  
KAMLOOPS, B.C.

**LOT 2 PHASE 2  
2094 LINFIELD DRIVE  
ABERDEEN HIGHLANDS**

DRAWN BY  
SB

ALL WINDOW & DOOR SIZES  
ARE INCH INCH  
3048 = 30" X 48"

ISSUED FOR:

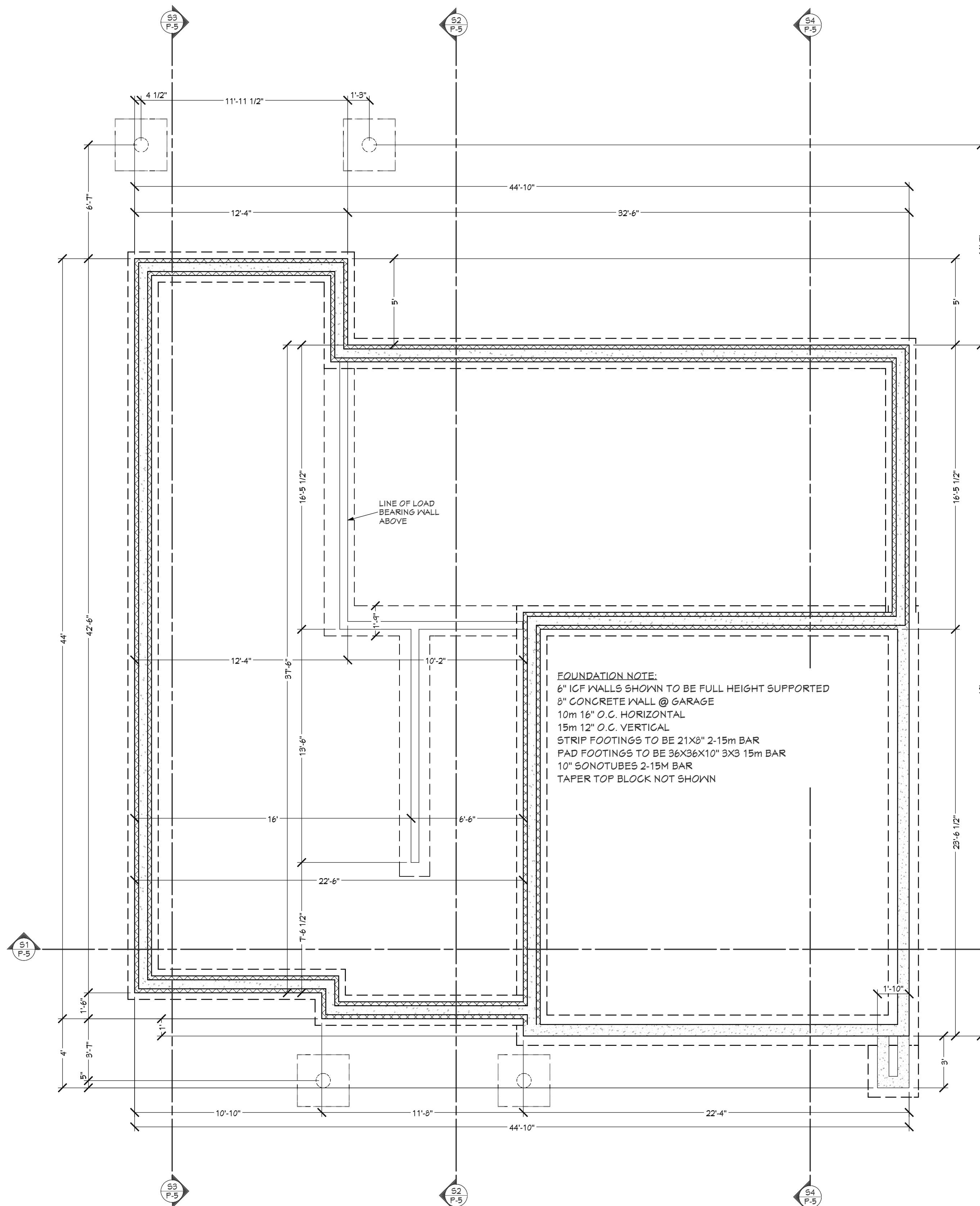
- APR 4 23 CONCEPT LAYOUTS
- APR 6 23 CONCEPT LAYOUTS v2
- APR 12 23 FLIPPED
- APR 12 23 FOR REVIEW
- APR 26 23 NOTE ARROW

**LOWER & MAIN  
FLOOR**

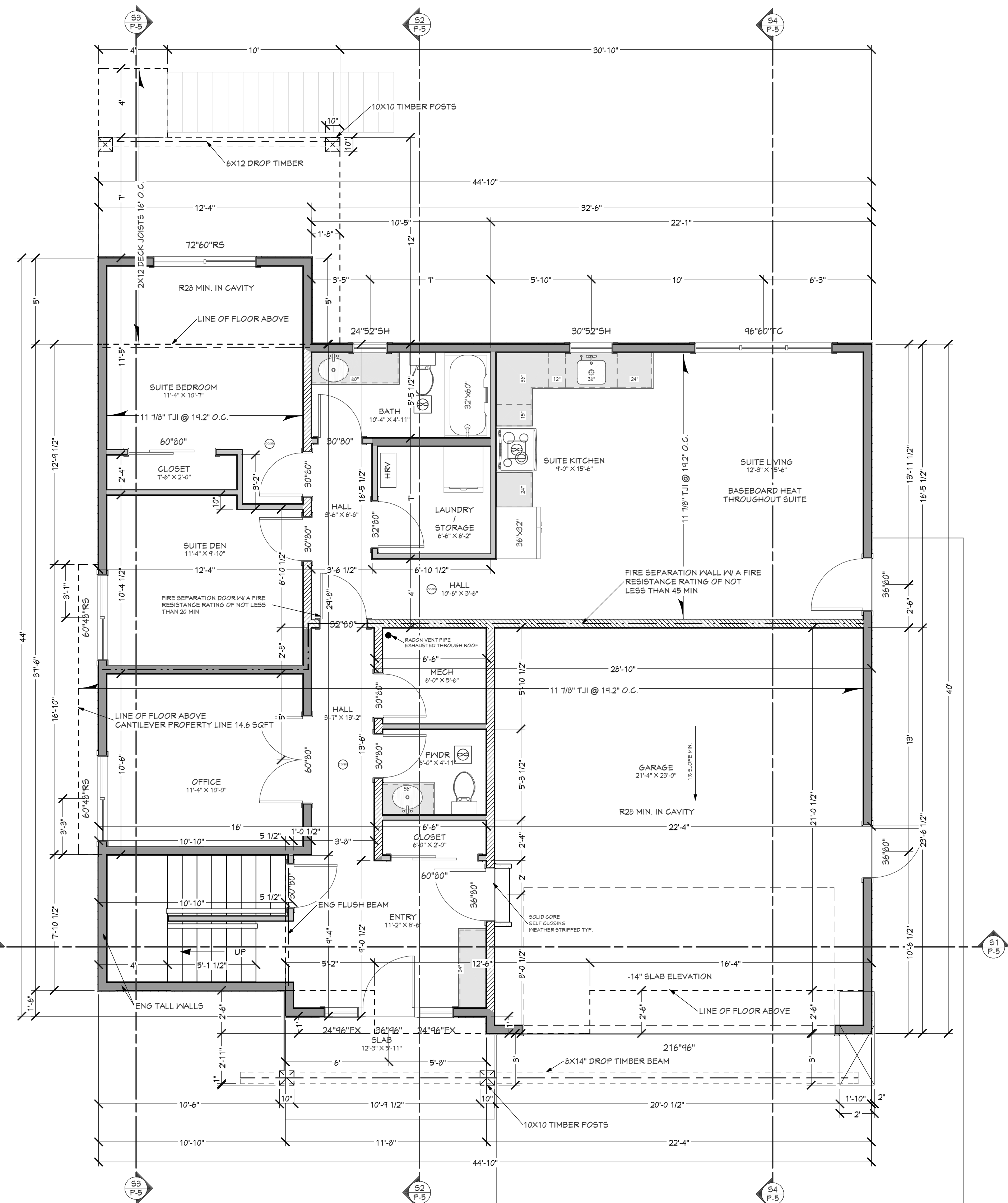
P-1	3D VIEWS & PLOT PLAN
P-2	LOWER & MAIN FLOOR
P-3	ELEVATIONS
P-4	LEFT & RIGHT ELEVATIONS
P-5	SECTIONS 1,2,4

DATE:  
Wednesday, April 26, 2023

SCALE: 1/4" = 1'-0"



**FOUNDATION PLAN**  
SCALE: 1/4" = 1' - 0"

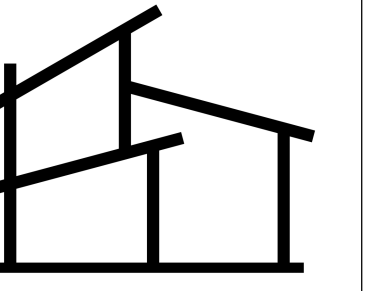


**MAIN FLOOR PLAN**  
SCALE: 1/4" = 1' - 0"

**HOUSE CHARACTERISTICS (INC. STAIRS)**

GARAGE : 510 SQFT  
 LOWER FLOOR : 1302 SQFT  
 (SUITE : 826 SQFT 1BED SUITE)  
 UPPER FLOOR : 1750 SQFT  
 DECK : 186 SQFT

TOTAL : 3052 SQFT



**BULMAN  
DESIGNS  
LTD.**

250-682-0393  
BULMANDESIGNS.COM  
SEANBULMAN@LIVE.CA  
KAMLOOPS, B.C.

**LOT 2 PHASE 2  
2094 LINFIELD DRIVE  
ABERDEEN HIGHLANDS**

DRAWN BY  
SB

ALL WINDOW & DOOR SIZES  
ARE INCH INCH  
3048 = 30" X 48"

ISSUED FOR:

- APR 4 23 CONCEPT LAYOUTS
- APR 6 23 CONCEPT LAYOUTS v2
- APR 12 23 FLIPPED
- APR 12 23 FOR REVIEW
- APR 26 23 NOTE ARROW

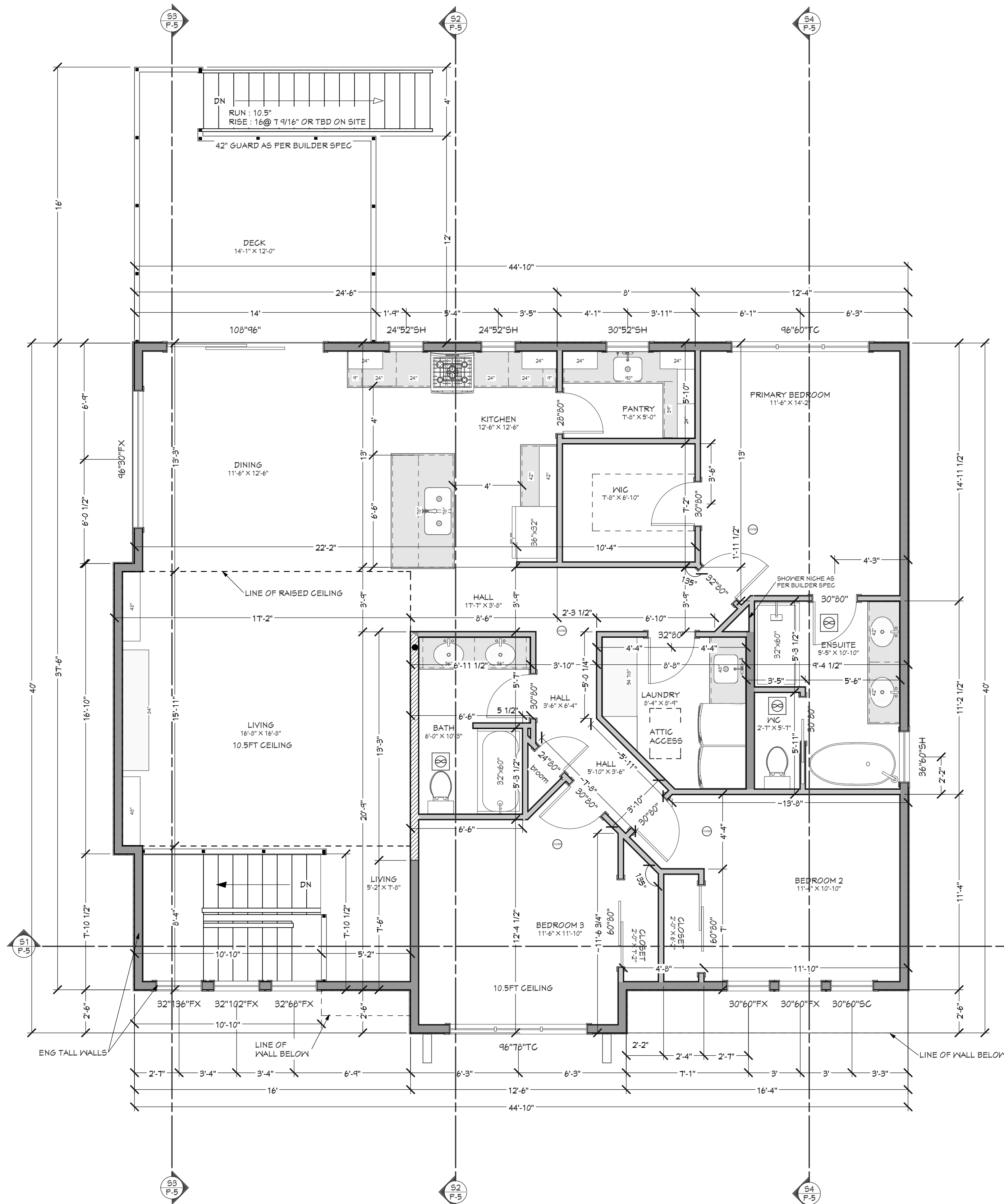
**ELEVATIONS**

P-1	3D VIEWS & PLOT PLAN
P-2	LOWER & MAIN FLOOR
P-3	ELEVATIONS
P-4	LEFT & RIGHT ELEVATIONS
P-5	SECTIONS 1,2,4

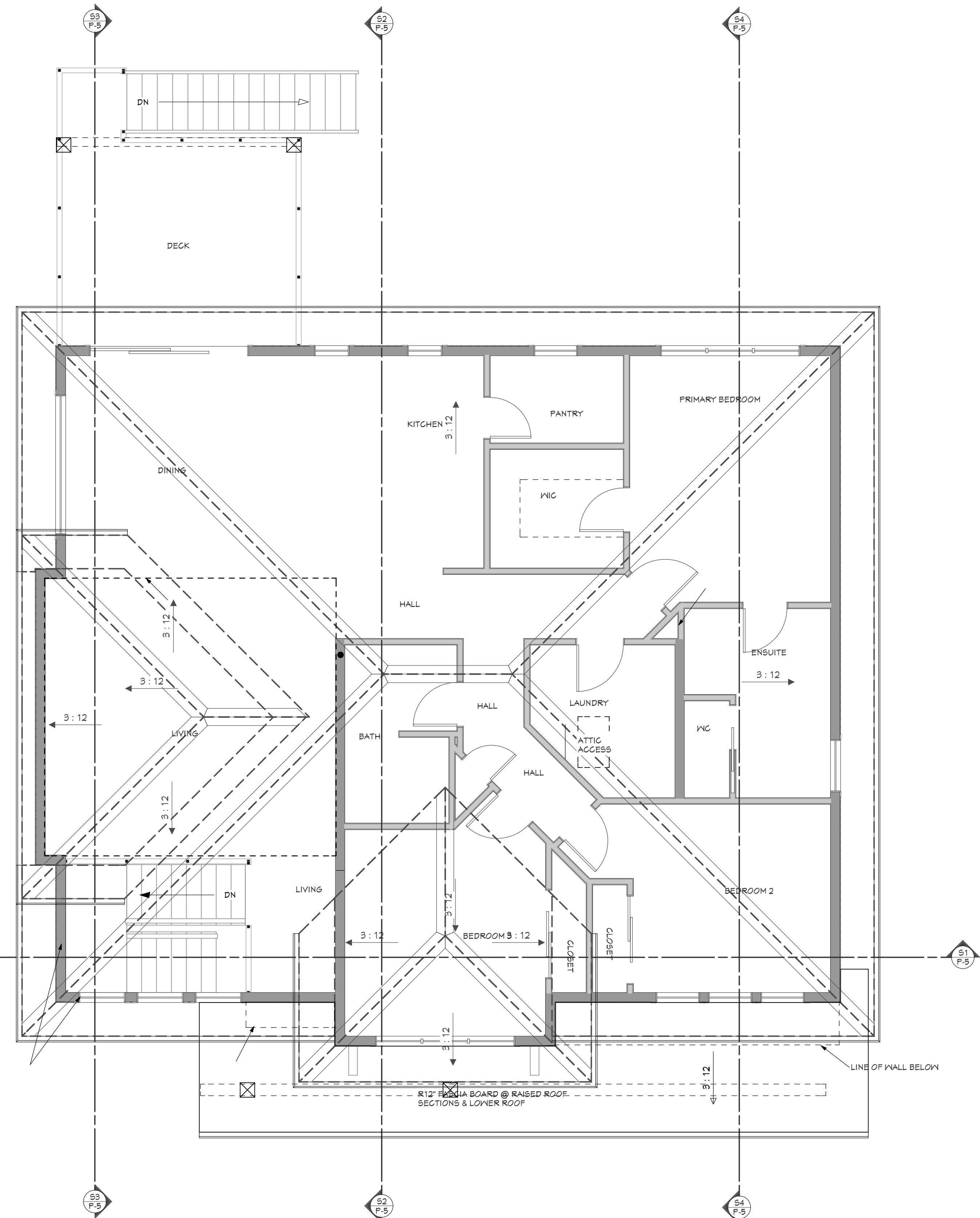
DATE:  
Wednesday, April 26, 2023

SCALE: 1/4" = 1'-0"

P-3



**LOWER FLOOR PLAN**  
SCALE: 1/4" = 1' - 0"



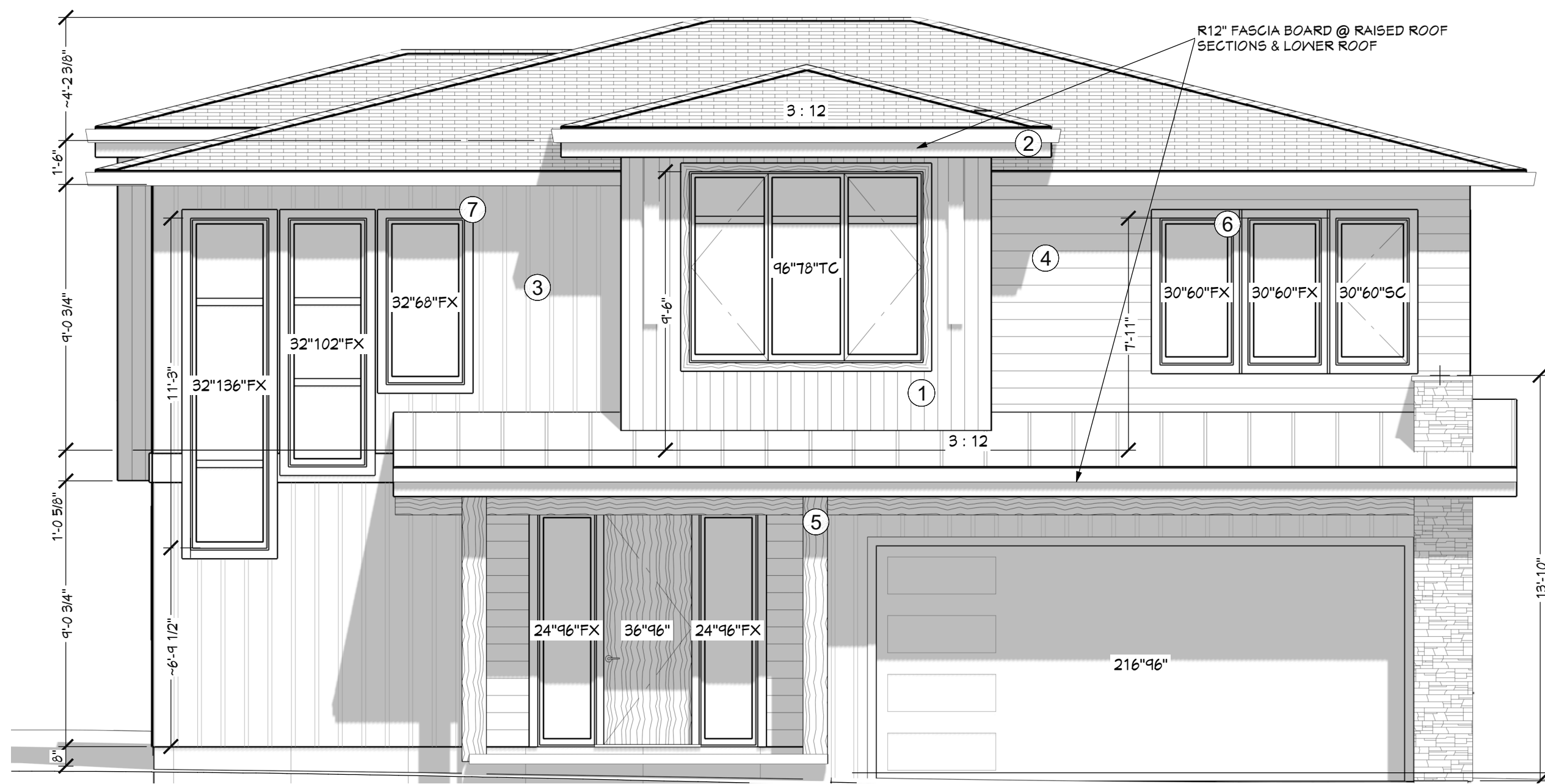
**UPPER FLOOR PLAN**  
SCALE: 1/4" = 1' - 0"

**HOUSE CHARACTERISTICS (INC. STAIRS)**  
GARAGE : 510 SQFT  
LOWER FLOOR : 1302 SQFT  
(SUITE : 826 SQFT 1BED SUITE)  
UPPER FLOOR : 1750 SQFT  
DECK : 186 SQFT

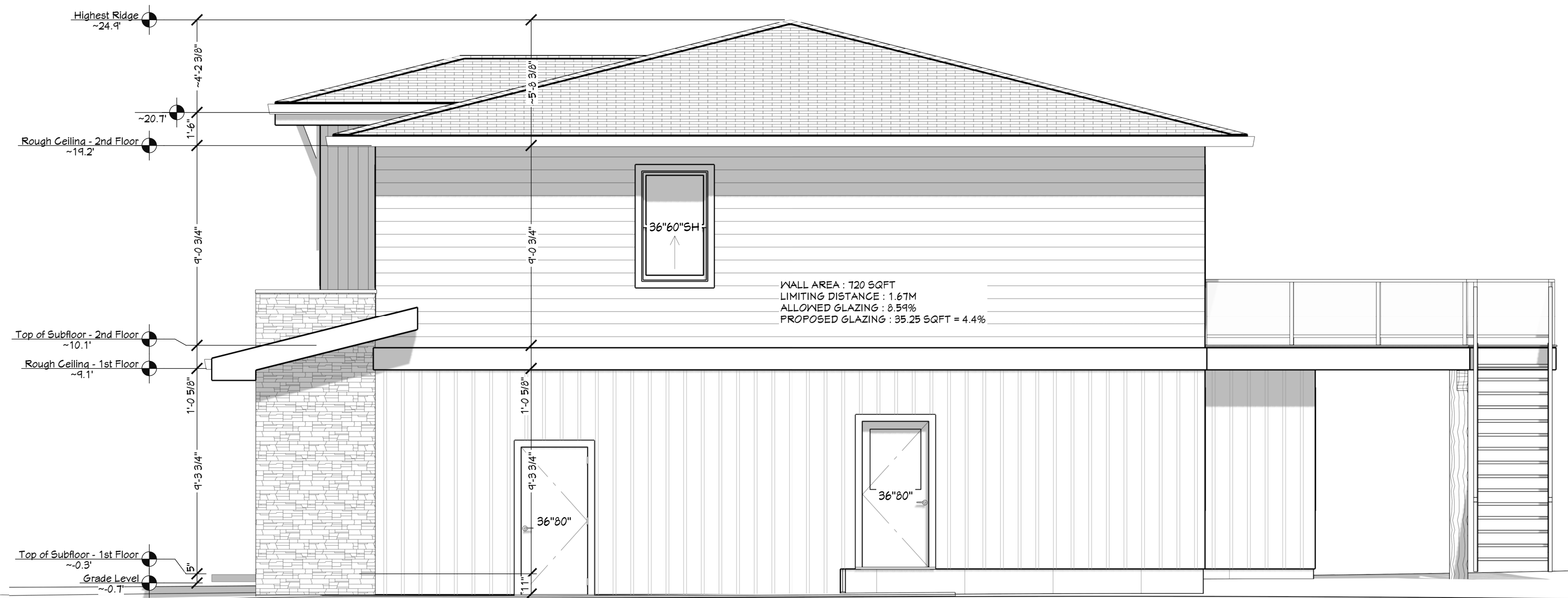
TOTAL : 3052 SQFT



FINISH SCHEDULE	
①	BOARD & BATTEN : SANDCASTLE OR SUMMER WHEAT
②	FASCIA BOARD, BELLY BAND, GUTTER, : BLACK
③	LP BOARD & BATTEN : CAVERN STEEL
④	LP LAP SIDING : DESERT STONE
⑤	TIMBER POST & BEAMS : COLOUR MATCH WOODTONE B&B
⑥	WINDOW FRAMES : BLACK
⑦	WINDOW TRIM : CAVERN STEEL WHERE APPLICABLE



**EXTERIOR ELEVATION FRONT**  
SCALE: 1/4" = 1' - 0"



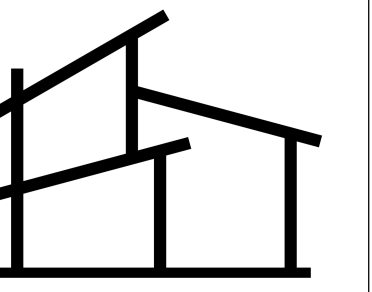
**EXTERIOR ELEVATION LEFT**  
SCALE: 1/4" = 1' - 0"



**EXTERIOR ELEVATION REAR**  
SCALE: 1/4" = 1' - 0"



**EXTERIOR ELEVATION RIGHT**  
SCALE: 1/4" = 1' - 0"



**BULMAN  
DESIGNS  
LTD.**

250-682-0393  
BULMANDESIGNS.COM  
SEANBULMAN@LIVE.CA  
KAMLOOPS, B.C.

**LOT 2 PHASE 2  
2094 LINFIELD DRIVE  
ABERDEEN HIGHLANDS**

DRAWN BY  
SB

ALL WINDOW & DOOR SIZES  
ARE INCH INCH  
3048 = 30" X 48"

ISSUED FOR:

- APR 4 23 CONCEPT LAYOUTS
- APR 6 23 CONCEPT LAYOUTS v2
- APR 12 23 FLIPPED
- APR 12 23 FOR REVIEW
- APR 26 23 NOTE ARROW

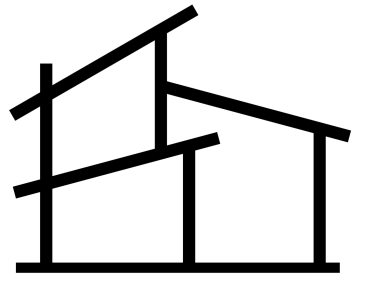
**LEFT & RIGHT  
ELEVATIONS**

- P-1 3D VIEWS & PLOT PLAN
- P-2 LOWER & MAIN FLOOR
- P-3 ELEVATIONS
- P-4 LEFT & RIGHT ELEVATIONS
- P-5 SECTIONS 1,2,4

DATE:  
Wednesday, April 26, 2023

SCALE: 1/4" = 1' - 0"

**P-4**



**BULMAN  
DESIGNS  
LTD.**

250-682-0393  
BULMANDESIGNS.COM  
SEANBULMAN@LIVE.CA  
KAMLOOPS, B.C.

**LOT 2 PHASE 2  
2094 LINFIELD DRIVE  
ABERDEEN HIGHLANDS**

DRAWN BY  
SB

ALL WINDOW & DOOR SIZES  
ARE INCH INCH  
3048 = 30" X 48"

ISSUED FOR:

APR 4 23 CONCEPT LAYOUTS  
APR 6 23 CONCEPT LAYOUTS v2  
APR 12 23 FLIPPED  
APR 12 23 FOR REVIEW  
APR 26 23 NOTE ARROW

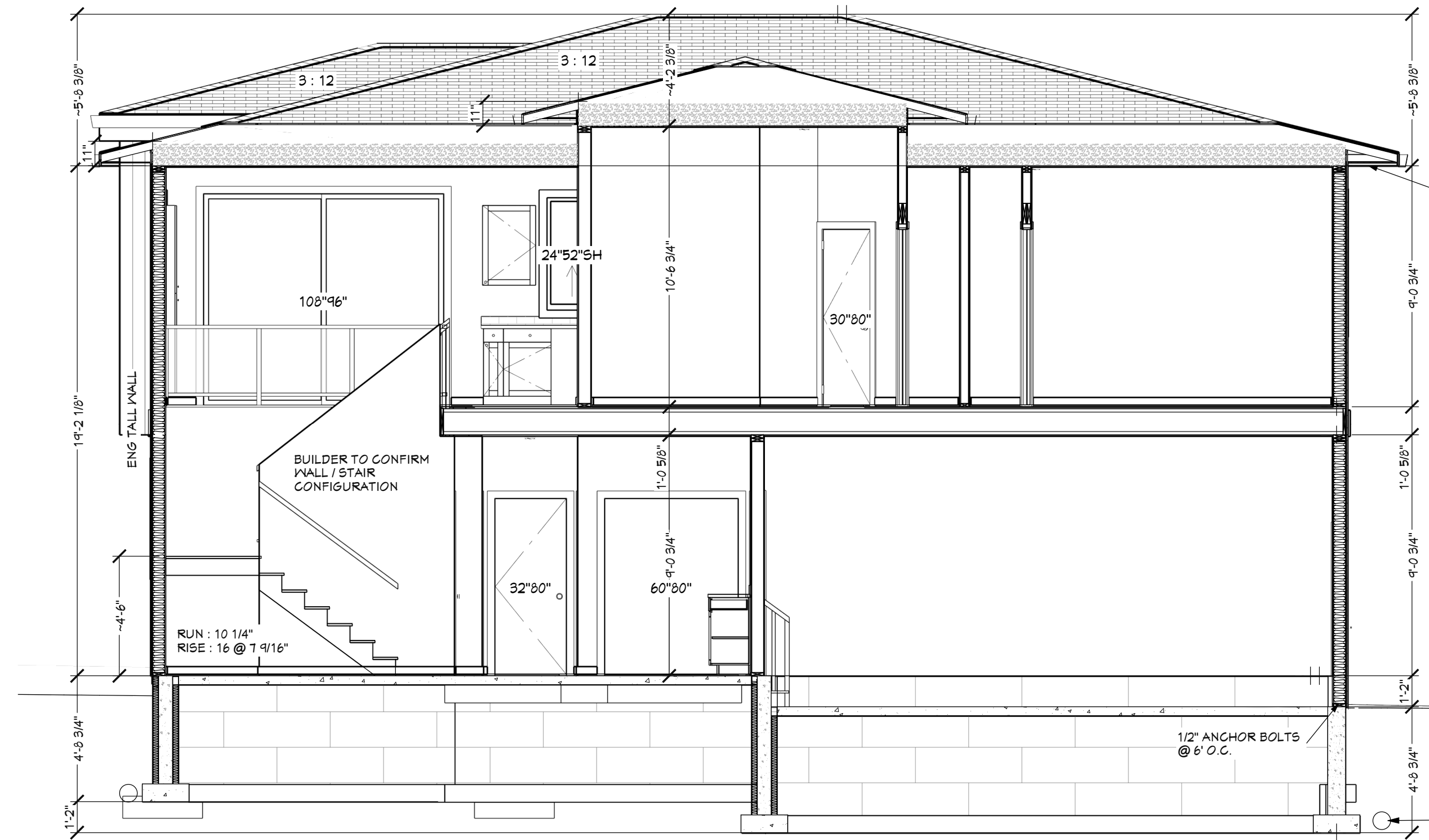
**SECTIONS 1,2,4**

P-1 3D VIEWS & PLOT PLAN  
P-2 LOWER & MAIN FLOOR  
P-3 ELEVATIONS  
P-4 LEFT & RIGHT ELEVATIONS  
P-5 SECTIONS 1,2,4

DATE:  
Wednesday, April 26, 2023

SCALE: 1/4" = 1'-0"

P-5



**NOTE:**  
BUILDER TO SPECIFY IF EXT. TYVEK OR INT. 6 MIL POLY. TO BE USED FOR AIR BARRIER ENERGY ADVISOR ASSEMBLIES TO TAKE PRECEDENCE

**PRIMARY WALL ASSEMBLY - EXTERIOR**  
MATERIAL COMPONENT  
EXT AIR FILM  
LP SMARTSIDE LAP SIDING  
60 MIN BUILDING PAPER  
1/2" PLYWOOD  
2X6 STUD AT 24" O.C. W/ R 24 INSULATION  
6 MIL POLY V.B.  
1/2" DRYWALL  
PAINT  
INTERIOR AIR FILM

**FLOOR OVER NON HEATED SPACE**  
MATERIAL COMPONENT  
3/4" PLYWOOD  
11 7/8" TJI @ 19.2" O.C. W/ R26 BATTS  
5/8" DRYWALL OR SOFFIT  
PAINT  
EXTERIOR AIR FILM

**FLOOR ASSEMBLY - INTERIOR**  
MATERIAL COMPONENT  
3/4" T&G PLYWOOD  
11 7/8" TJI @ 19.2" O.C. (MIN. R26 @ WALL CONNECTIONS)  
1/2" DRYWALL

**WALL ASSEMBLY - INTERIOR**  
MATERIAL COMPONENT  
1/2" DRYWALL  
2X4 STUDS @ 24" O.C.  
(2X6 @ 24" O.C. LOADBEARING)  
1/2" DRYWALL

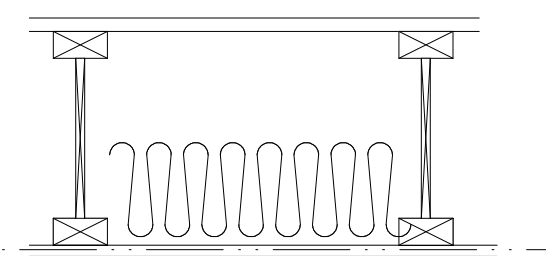
**WALL ASSEMBLY - FOUNDATION WALL**  
MATERIAL COMPONENT  
DIMPLEBOARD  
6" LOGIXS ICF  
6 MIL POLY V.B.  
1/2" DRYWALL  
PAINT  
INTERIOR AIR FILM

**FLOOR ON GROUND**  
MATERIAL COMPONENT  
CONCRETE  
RIGID INSULATION TAPED & SEALED  
RADON GRANULAR BASE

**CEILING BELOW ATTIC**  
MATERIAL COMPONENT  
R60 LOOSE FILL INSULATION W/ TRUSSES 24" O.C.  
6 MIL POLY V.B.  
5/8" DRYWALL  
PAINT  
INTERIOR AIR FILM

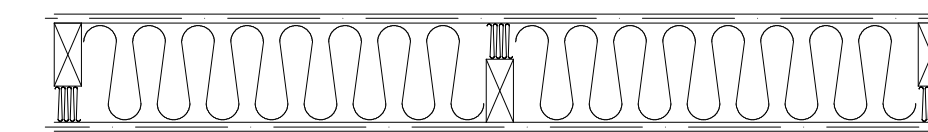
**WALL ASSEMBLY - GARAGE TO DWELLING**  
RSJ // MATERIAL COMPONENT  
EXT AIR FILM  
1/2" DRYWALL  
2X6 STUD AT 24" O.C. W/ R 24 INSULATION  
6 MIL POLY V.B.  
1/2" DRYWALL  
PAINT

**FIRE SEPARATION DETAILS**



**CEILING ASSEMBLY - BETWEEN SUITE & RESIDENCE (F&S)**  
MATERIAL COMPONENT  
3/4" PLYWOOD  
11 7/8" TJI @ 19.2" O.C. W/ R19  
RESILIENT METAL CHANNEL 400mm O.C.  
5/8" TYPE X DRYWALL

= 45 MIN RESISTANCE, 48 STC RATING



**WALL ASSEMBLY - BETWEEN SUITE & RESIDENCE (MTB)**

MATERIAL COMPONENT  
1/2" TYPE X DRYWALL  
2X4 STUDS OFFSET 2X6 PLATE @ 24" O.C. W/ R12  
1/2" TYPE X DRYWALL

= 45 MIN RESISTANCE, 45 STC RATING (43 MIN.)

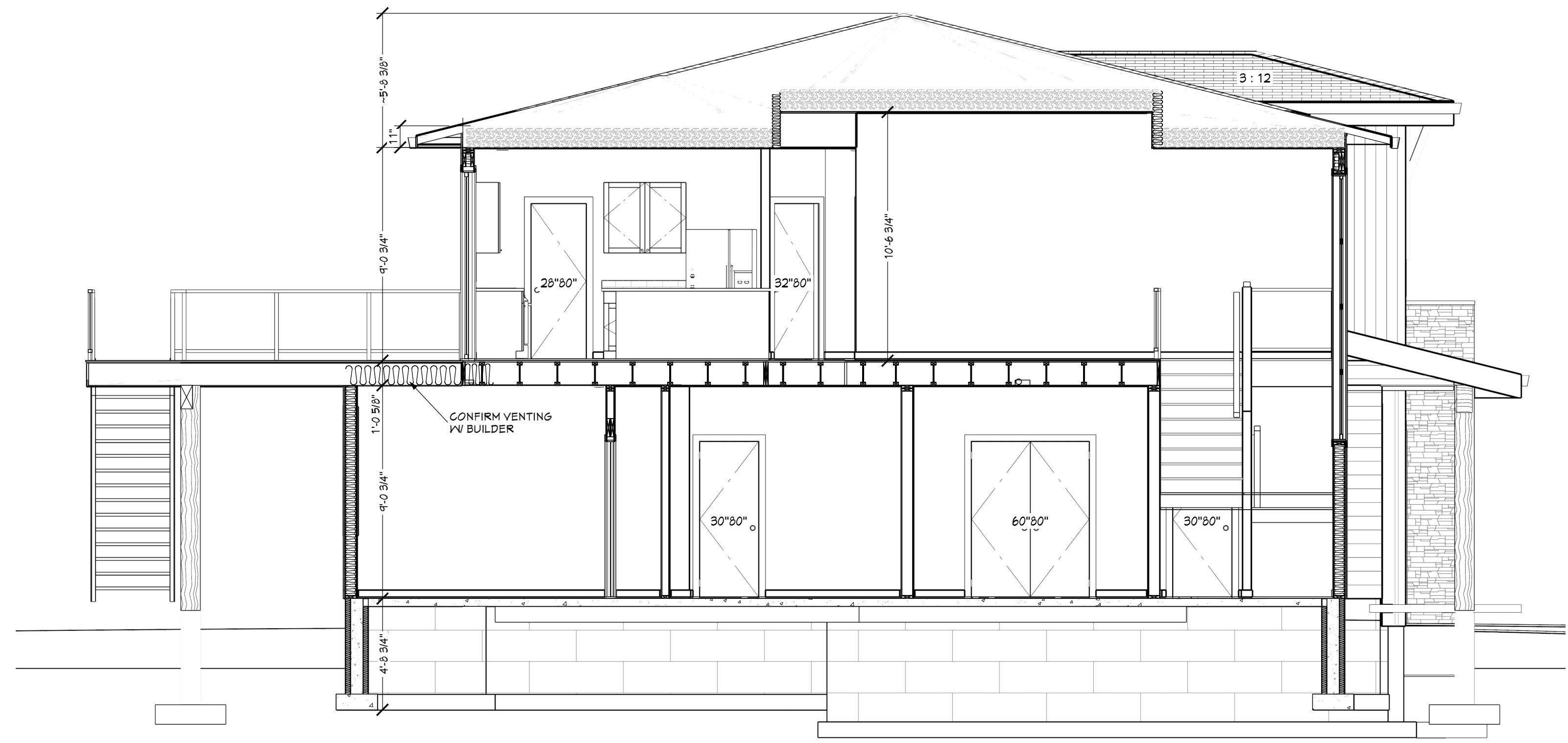
FIBERBOARD MAY BE ADDED BEHIND DRYWALL FOR ADDITIONAL SOUND SEPARATION

**CROSS SECTION 3**  
SCALE: 1/4" = 1'-0"

**CROSS SECTION 1**  
SCALE: 1/4" = 1'-0"



**CROSS SECTION 2**  
SCALE: 1/4" = 1'-0"



**CROSS SECTION 3**  
SCALE: 1/4" = 1'-0"



**CROSS SECTION 4**  
SCALE: 1/4" = 1'-0"